

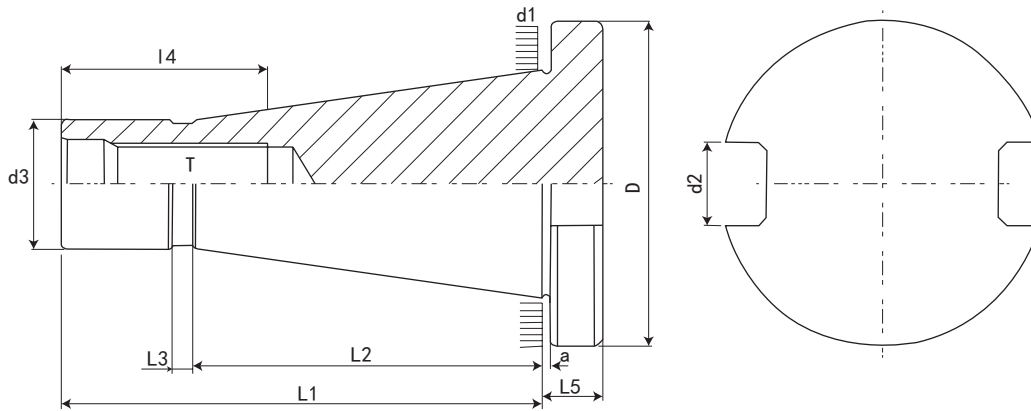
NT

DIN 2080

PRECISION TOOL HOLDERS SYSTEM



NT数控刀柄系列
CNC TOOL SYSTEMS



| 规格 / 型号 Model | D 0 -0.4 | d1 | d2 H12 | d3 Max. | a ±0.2 | L1 | L2 | L3 | L4 Min | L5 ±0.15 | T 6H |
|---------------|----------------|-------|-----------|------------|-----------|-------|-------|----|-----------|-------------|-----------------------------|
| NT30 | 49 | 31.75 | 16.1 | 17.04 | 1.6 | 68.4 | 48.4 | 3 | 24 | 8 | 1/2"W12 M12*1.75P 1/2"13UNC |
| NT40 | 63 | 44.45 | 16.1 | 24.92 | 1.6 | 93.4 | 65.4 | 5 | 32 | 10 | 5/8"W11 M16*2.0P |
| NT50 | 97.5 | 69.85 | 25.7 | 39.19 | 3.2 | 126.8 | 101.8 | 8 | 47 | 12 | 1"W8 M24*3.0P |

特点:

- ◎锥度精度: <AT3
- ◎基本材质: JIS-SCM415
- ◎硬度: HRC56°渗碳深度 >0.8mm
- ◎真圆度: <0.8um
- ◎表面粗糙度: Ra<0.5um
- ◎本体规范: DIN 2080

Features:

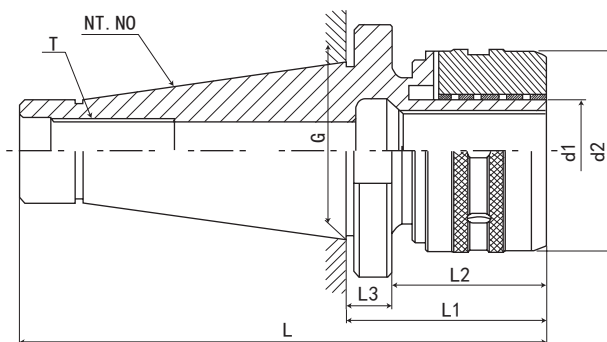
- ◎ Taper tolerance<AT3
- ◎ Basic Material:JIS-SCM415
- ◎ Hardness>HRC 56° Carbon depth>0.8mm
- ◎ Roundness<0.8um
- ◎ Surface roughness :Ra<0.5um
- ◎ Shank body standard : DIN2080

数控刀柄系列 CNC TOOL SYSTEMS

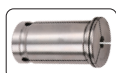
NT-C 型高精度强力刀柄

NT-C FORCE MILLING CHUCK

数控刀柄
CNC TOOLS



P.131



P.116

| 规格 / 型号 Model | L | L1 | L2 | L3 | d1 | d2 | T | G | 重量 KGS | 夹持范围 Range |
|---------------|-------|-----|-----|----|----|----|-----------|-------|--------|---|
| NT30-C20-80 | 148.4 | 80 | 69 | 11 | 20 | 56 | M12*1.75P | 31.75 | 2.0 | 3 4 5 6 8 10 12 14 16 |
| NT30-C22-80 | 148.4 | 80 | 69 | 11 | 22 | 56 | M12*1.75P | 31.75 | 2.1 | 3 4 5 6 8 10 12 14 16 |
| NT30-C25-80 | 148.4 | 80 | 69 | 11 | 25 | 61 | M12*1.75P | 31.75 | 2.3 | 3 4 5 6 8 10 12 14 16 18 20 |
| NT30-C32-90 | 158.4 | 90 | 79 | 11 | 32 | 68 | M12*1.75P | 31.75 | 2.5 | 3 4 5 6 8 10 12 14 16 18 20 22 24 25 |
| 规格 / 型号 Model | L | L1 | L2 | L3 | d1 | d2 | T | G | 重量 KGS | 夹持范围 Range |
| NT40-C20-105 | 198.4 | 105 | 94 | 11 | 20 | 56 | M16*2.0P | 44.45 | 2.5 | 3 4 5 6 8 10 12 14 16 |
| NT40-C22-105 | 198.4 | 105 | 94 | 11 | 22 | 56 | M16*2.0P | 44.45 | 2.6 | 3 4 5 6 8 10 12 14 16 |
| NT40-C25-105 | 198.4 | 105 | 94 | 11 | 25 | 61 | M16*2.0P | 44.45 | 2.7 | 3 4 5 6 8 10 12 14 16 18 20 |
| NT40-C32-105 | 198.4 | 105 | 94 | 11 | 32 | 68 | M16*2.0P | 44.45 | 2.8 | 3 4 5 6 8 10 12 14 16 18 20 22 24 25 |
| 规格 / 型号 Model | L | L1 | L2 | L3 | d1 | d2 | T | G | 重量 KGS | 夹持范围 Range |
| NT50-C25-105 | 231.8 | 105 | 90 | 15 | 25 | 61 | M24*3.0P | 69.85 | 5.2 | 3 4 5 6 8 10 12 14 16 18 20 |
| NT50-C32-110 | 236.8 | 110 | 95 | 15 | 32 | 68 | M24*3.0P | 69.85 | 5.4 | 3 4 5 6 8 10 12 14 16 18 20 22 24 25 |
| NT50-C42-120 | 246.8 | 120 | 105 | 15 | 42 | 78 | M24*3.0P | 69.85 | 6.2 | 3 4 5 6 8 10 12 14 16 18 20 22 24 25 28 30 32 34 36 |

特点:

高速、高精度、高寿命直柄刀具系列

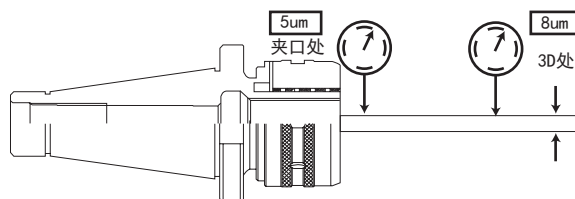
- ◎材质: 20CrMnTi/15CrMn
- ◎硬度: HRC58-60, 渗碳深度 > 0.8mm
- ◎锥柄公差等级: ≤ AT3
- ◎刀柄内孔分割了六槽, 以防止刀具转动, 增大夹持力
- ◎采用特殊材料制作滚针轴承保持架, 延长使用寿命, 增强夹紧力
- ◎具有夹持力大, 定点精度高, 特别适用于强力切削
- ◎可提供两种外观: 光饰或涂层处理
- ◎内孔多次研磨, 可达 Ra0.4, 起到镜面效果
- ◎外圆及端面多次研磨, 可达 Ra0.4, 起到镜面效果
- ◎表面“环保”特殊涂层处理, 提高表面硬度、耐磨性, 提高清洁度, 精度更稳定, 表面更光滑, 防锈、防腐蚀效果更好, 手感更舒适, 外观更美观
- ◎扳手、筒夹须另行购买

Features:

High speed, high accuracy, high durability C-STRAIGHT TOOL SERIES

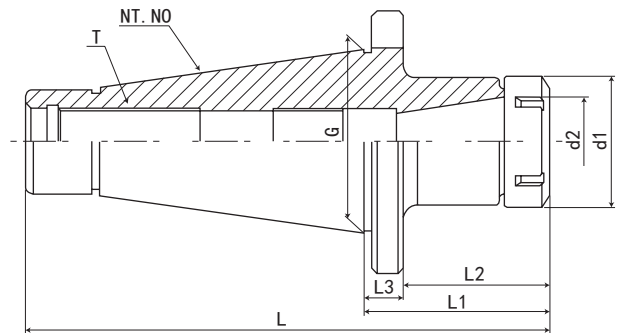
- ◎ Material: 20CrMnTi/15CrMn;
- ◎ Hardness: HRC58-60, Carbon depth > 0.8
- ◎ Tolerance class: ≤ AT3
- ◎ Inner hole of the shank divide into 6 troughs to prevent the insert remove, increase the grasp force
- ◎ Ball bearing cage is made of special material, improve the endurance, enhance the grasp force
- ◎ Grasp force strong, centering accuracy high, suit to heavy cutting
- ◎ Two kinds looks provide: polishing or chemical nickel-plating processing;
- ◎ Inner hole grinding for many times, so as to reach Ra0.4, has a mirror effect;
- ◎ End and the cylindrical are grinding for many times, can reach Ra0.4, has a mirror effect;
- ◎ Surface "environmental protection", special coating surface treatment, improve the hardness and endurance of the surface, cleanliness better, accuracy stable, surface more smooth, antirust, feel comfortable, appearance nice.
- ◎ The spanner, chuck must purchase alone.

NT40 - C32 - 105



NT-ER 弹性筒夹刀柄

NT-ER COLLET CHUCK



P.131



P.106



P.133

| 规格 / 型号 Model | L | L1 | L2 | L3 | d1 | d2 | G | T | 夹持范围 Range |
|---------------|-------|-----|----|----|----|----|-------|-----------|------------|
| NT30-ER16-45 | 113.4 | 45 | 34 | 11 | 28 | 16 | 31.75 | M12*1.75P | 1-10mm |
| NT30-ER20-45 | 113.4 | 45 | 34 | 11 | 34 | 20 | 31.75 | M12*1.75P | 1-13mm |
| NT30-ER25-55 | 123.4 | 55 | 44 | 11 | 42 | 25 | 31.75 | M12*1.75P | 1-16mm |
| NT30-ER32-60 | 128.4 | 60 | 49 | 11 | 50 | 32 | 31.75 | M12*1.75P | 2-20mm |
| NT30-ER40-70 | 138.4 | 70 | 59 | 11 | 63 | 40 | 31.75 | M12*1.75P | 2-26mm |
| 规格 / 型号 Model | L | L1 | L2 | L3 | d1 | d2 | G | T | 夹持范围 Range |
| NT40-ER16-45 | 138.4 | 45 | 34 | 11 | 28 | 16 | 44.45 | M16*2.0P | 1-10mm |
| NT40-ER20-45 | 138.4 | 45 | 34 | 11 | 34 | 20 | 44.45 | M16*2.0P | 1-13mm |
| NT40-ER25-55 | 148.4 | 55 | 44 | 11 | 42 | 25 | 44.45 | M16*2.0P | 1-16mm |
| NT40-ER32-60 | 153.4 | 60 | 49 | 11 | 50 | 32 | 44.45 | M16*2.0P | 2-20mm |
| NT40-ER40-70 | 163.4 | 70 | 59 | 11 | 63 | 40 | 44.45 | M16*2.0P | 2-26mm |
| NT40-ER50-80 | 173.4 | 80 | 69 | 11 | 78 | 50 | 44.45 | M16*2.0P | 6-34mm |
| 规格 / 型号 Model | L | L1 | L2 | L3 | d1 | d2 | G | T | 夹持范围 Range |
| NT50-ER11-100 | 226.8 | 100 | 85 | 15 | 19 | 11 | 69.85 | M24*3.0P | 1-7mm |
| NT50-ER16-100 | 226.8 | 100 | 85 | 15 | 28 | 16 | 69.85 | M24*3.0P | 1-10mm |
| NT50-ER20-100 | 226.8 | 100 | 85 | 15 | 34 | 20 | 69.85 | M24*3.0P | 1-13mm |
| NT50-ER25-100 | 226.8 | 100 | 85 | 15 | 42 | 25 | 69.85 | M24*3.0P | 1-16mm |
| NT50-ER32-75 | 201.8 | 75 | 60 | 15 | 50 | 32 | 69.85 | M24*3.0P | 2-20mm |
| NT50-ER32-100 | 226.8 | 100 | 85 | 15 | 50 | 32 | 69.85 | M24*3.0P | 2-20mm |
| NT50-ER40-80 | 206.8 | 80 | 65 | 15 | 63 | 40 | 69.85 | M24*3.0P | 2-26mm |
| NT50-ER40-100 | 226.8 | 100 | 85 | 15 | 63 | 40 | 69.85 | M24*3.0P | 2-26mm |
| NT50-ER50-80 | 206.8 | 80 | 65 | 15 | 78 | 50 | 69.85 | M24*3.0P | 6-34mm |
| NT50-ER50-100 | 226.8 | 100 | 85 | 15 | 78 | 50 | 69.85 | M24*3.0P | 6-34mm |

特点:

注:

- ◎ 本体锥柄规格: GB3837/DIN2080
- ◎ 配有 ER 弹性筒夹, 可适用于夹持铣刀、钻头、丝锥
- ◎ 装置时筒夹必需先置入螺母, 再装入刀具, 接着锁固入本体
- ◎ 适用专用扳手, 不可用其它工具, 可能造成刀体损坏
- ◎ 扳手、筒夹须另行购买

Features:

- ◎ Spindle conicity standard:GB3837/DIN2080
- ◎ ER collet chuck set with ER collet with flexibility used for gripping cutting tool, drill bit, draw bolt and so on.
- ◎ When using, nut should be clamped tensed firstly with cutting tools then locked into the main body.
- ◎ Always use the recommended wrench or spanner, unless, there might cause damage of cutting tools.
- ◎ The spanner, chuck must purchase alone.

数控刀柄系列 CNC TOOL SYSTEMS

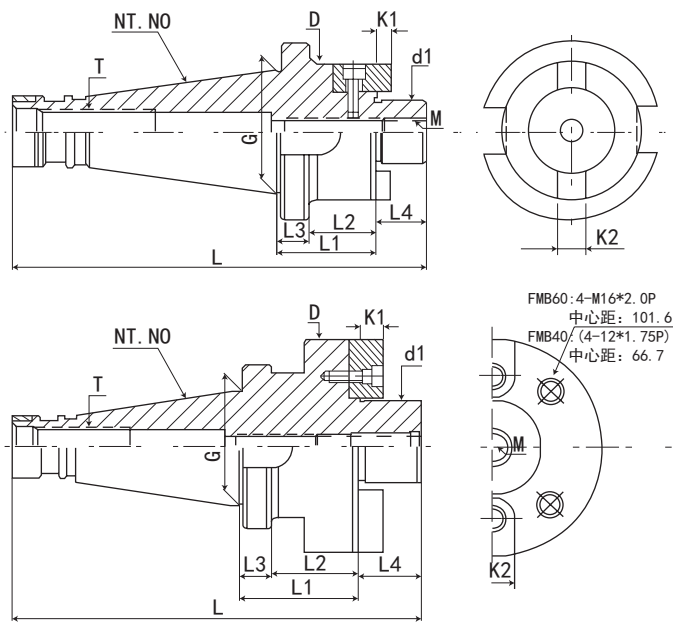
NT-FMB 平面铣刀柄

NT-FMB FACE MILL ARBOR

数控刀柄
CNC TOOLS



P. L02



| 规格 / 型号 Model | L | L1 | L2 | L3 | L4 | D | d1 | K1 | K2 | G | T | M | 重量 KGS |
|----------------|-------|-----|----|----|----|--------|----|------|------|-------|-----------|-----------|--------|
| NT30-FMB22-35 | 121.4 | 35 | 24 | 11 | 18 | 48 | 22 | 4.8 | 10 | 31.75 | M12*1.75P | M10*1.5P | 0.67 |
| NT30-FMB27-35 | 123.4 | 35 | 24 | 11 | 20 | 58 | 27 | 5.8 | 12 | 31.75 | M12*1.75P | M12*1.75P | 1.0 |
| NT30-FMB32-35 | 125.4 | 35 | 24 | 11 | 22 | 70 | 32 | 6.8 | 14 | 31.75 | M12*1.75P | M16*2.0P | 1.2 |
| NT30-FMB40-35 | 128.4 | 35 | 24 | 11 | 25 | 80 | 40 | 8.3 | 16 | 31.75 | M12*1.75P | M16*2.0P | 1.4 |
| 规格 / 型号 Model | L | L1 | L2 | L3 | L4 | D | d1 | K1 | K2 | G | T | M | 重量 KGS |
| NT40-FMB22-45 | 156.4 | 45 | 34 | 11 | 18 | 48 | 22 | 4.8 | 10 | 44.45 | M16*2.0P | M10*1.5P | 1.4 |
| NT40-FMB27-45 | 158.4 | 45 | 34 | 11 | 20 | 58 | 27 | 5.8 | 12 | 44.45 | M16*2.0P | M12*1.75P | 1.6 |
| NT40-FMB32-45 | 160.4 | 45 | 34 | 11 | 22 | 70 | 32 | 6.8 | 14 | 44.45 | M16*2.0P | M16*2.0P | 1.85 |
| NT40-FMB40-45 | 163.4 | 45 | 34 | 11 | 25 | 80 | 40 | 8.3 | 16 | 44.45 | M16*2.0P | M16*2.0P | 2.7 |
| 规格 / 型号 Model | L | L1 | L2 | L3 | L4 | D | d1 | K1 | K2 | G | T | M | 重量 KGS |
| NT50-FMB22-45 | 189.8 | 45 | 30 | 15 | 18 | 48 | 22 | 4.8 | 10 | 69.85 | M24*3.0P | M10*1.5P | 3.5 |
| NT50-FMB22-60 | 204.8 | 60 | 45 | 15 | 18 | 48 | 22 | 4.8 | 10 | 69.85 | M24*3.0P | M10*1.5P | 3.6 |
| NT50-FMB22-100 | 244.8 | 100 | 85 | 15 | 18 | 48 | 22 | 4.8 | 10 | 69.85 | M24*3.0P | M10*1.5P | 4.0 |
| NT50-FMB27-45 | 191.8 | 45 | 30 | 15 | 20 | 58 | 27 | 5.8 | 12 | 69.85 | M24*3.0P | M12*1.75P | 3.9 |
| NT50-FMB27-60 | 206.8 | 60 | 45 | 15 | 20 | 58 | 27 | 5.8 | 12 | 69.85 | M24*3.0P | M12*1.75P | 4.0 |
| NT50-FMB27-100 | 246.8 | 100 | 85 | 15 | 20 | 58 | 27 | 5.8 | 12 | 69.85 | M24*3.0P | M12*1.75P | 4.1 |
| NT50-FMB32-45 | 193.8 | 45 | 30 | 15 | 22 | 70 | 32 | 6.8 | 14 | 69.85 | M24*3.0P | M16*2.0P | 4.0 |
| NT50-FMB32-60 | 208.8 | 60 | 45 | 15 | 22 | 70 | 32 | 6.8 | 14 | 69.85 | M24*3.0P | M16*2.0P | 4.2 |
| NT50-FMB32-100 | 248.8 | 100 | 85 | 15 | 22 | 70 | 32 | 6.8 | 14 | 69.85 | M24*3.0P | M16*2.0P | 4.5 |
| NT50-FMB40-45 | 196.8 | 45 | 30 | 15 | 25 | 80 | 40 | 8.3 | 16 | 69.85 | M24*3.0P | M16*2.0P | 4.83 |
| NT50-FMB40-60 | 211.8 | 60 | 45 | 15 | 25 | 80 | 40 | 8.3 | 16 | 69.85 | M24*3.0P | M16*2.0P | 5.2 |
| NT50-FMB40-100 | 251.8 | 100 | 85 | 15 | 25 | 80 | 40 | 8.3 | 16 | 69.85 | M24*3.0P | M16*2.0P | 5.5 |
| NT50-FMB60-60 | 211.8 | 60 | 45 | 15 | 25 | 128.75 | 60 | 12.5 | 25.4 | 69.85 | M24*3.0P | M16*2.0P | 8.5 |

特点:

注:

- ◎ 本体锥柄规格: GB3837/DIN2080
- ◎ 中心通孔有利于出水及抗震性强
- ◎ 平面铣刀配合部位 (d) 轴系公轴 h6
- ◎ 适用于平面铣削加工
- ◎ 可定制非常规长度

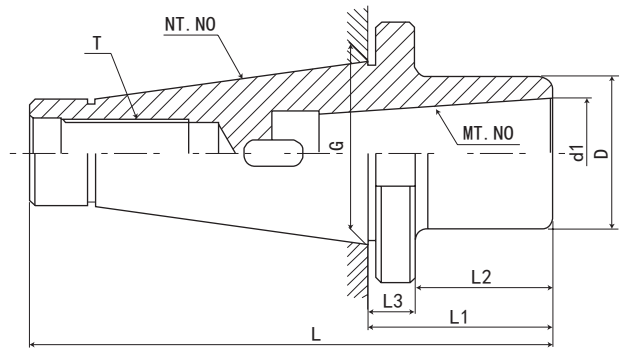
Features:

- ◎ Spindle conicity standard: GB3837/DIN2080
- ◎ With water through design that reduces vibration and steady for cutting.
- ◎ Connecting part(d) designed for metric size.
- ◎ Tool holders with BT shank for face mill chuck, Face mill holders equipped with screws and drive keys to assemble the mill cutter to holder.
- ◎ Can be made upon requested dimensions.

NT-MTA 带扁尾莫氏刀柄

NT-MTA TAPER ADAPTER (MORSE)

CNC TOOLS
数控刀柄



| 规格 / 型号 Model | L | L1 | L2 | L3 | D | d1 | G | 夹持钻头范围 | T |
|---------------|-------|-----|-----|----|----|--------|-------|----------|-----------|
| NT30-MTA1-50 | 118.4 | 50 | 39 | 11 | 25 | 12.065 | 31.75 | φ2-φ14 | M12*1.75P |
| NT30-MTA2-50 | 118.4 | 50 | 39 | 11 | 32 | 17.780 | 31.75 | φ14-φ23 | M12*1.75P |
| NT30-MTA3-70 | 138.4 | 70 | 59 | 11 | 40 | 23.825 | 31.75 | φ23-φ32 | M12*1.75P |
| 规格 / 型号 Model | L | L1 | L2 | L3 | D | d1 | G | 夹持钻头范围 | T |
| NT40-MTA1-50 | 143.4 | 50 | 39 | 11 | 25 | 12.065 | 44.45 | φ2-φ14 | M16*2.0P |
| NT40-MTA2-50 | 143.4 | 50 | 39 | 11 | 32 | 17.780 | 44.45 | φ14-φ23 | M16*2.0P |
| NT40-MTA3-65 | 158.4 | 65 | 54 | 11 | 40 | 23.825 | 44.45 | φ23-φ32 | M16*2.0P |
| NT40-MTA4-90 | 183.4 | 90 | 79 | 11 | 48 | 31.267 | 44.45 | φ32-φ50 | M16*2.0P |
| 规格 / 型号 Model | L | L1 | L2 | L3 | D | d1 | G | 夹持钻头范围 | T |
| NT50-MTA1-45 | 171.8 | 45 | 30 | 15 | 25 | 12.065 | 69.85 | φ2-φ14 | M24*3.0P |
| NT50-MTA2-55 | 181.8 | 55 | 40 | 15 | 32 | 17.780 | 69.85 | φ14-φ23 | M24*3.0P |
| NT50-MTA3-65 | 191.8 | 65 | 50 | 15 | 40 | 23.825 | 69.85 | φ23-φ32 | M24*3.0P |
| NT50-MTA4-70 | 196.8 | 70 | 55 | 15 | 48 | 31.267 | 69.85 | φ32-φ50 | M24*3.0P |
| NT50-MTA5-105 | 231.8 | 105 | 90 | 15 | 70 | 44.399 | 69.85 | φ50-φ75 | M24*3.0P |
| NT50-MTA6-170 | 296.8 | 170 | 155 | 15 | 85 | 63.348 | 69.85 | φ75-φ100 | M24*3.0P |
| NT50-MTA6-270 | 396.8 | 270 | 255 | 15 | 85 | 63.348 | 69.85 | φ75-φ100 | M24*3.0P |

特点:

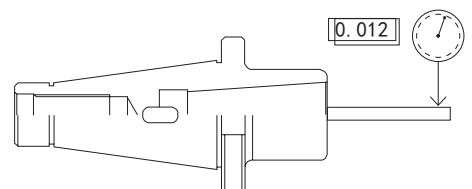
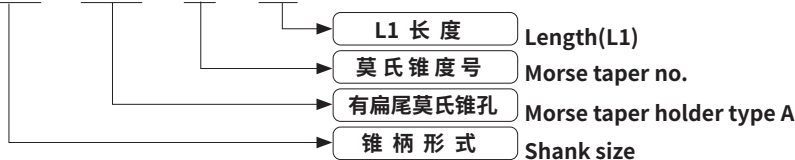
注:

- ◎ 本体锥柄规格: GB3837/DIN2080
- ◎ 刀柄用于莫氏锥柄刀具、钻头、铰刀等
- ◎ 钻头莫氏柄和刀具直径

Features:

- ◎ Spindle conicity standard: GB3837/DIN2080
- ◎ Used in Morse conicity tools, drill chuck, reamer and so on.
- ◎ Dimensions

NT40 - MTA - 2 - 50

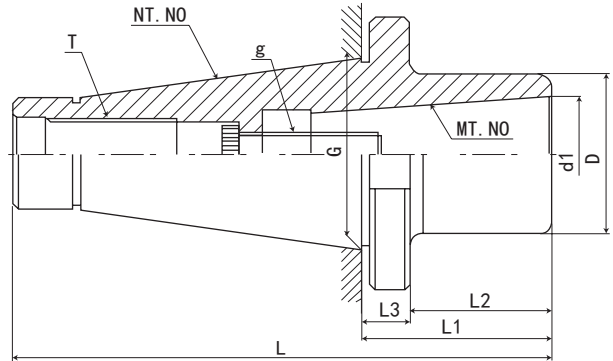


数控刀柄系列 CNC TOOL SYSTEMS

NT-MTB 无扁尾莫氏刀柄

NT-MTB MORSE TAPER HOLDER

数控刀柄
CNC TOOLS



| 规格 / 型号 Model | L | L1 | L2 | L3 | D | d1 | G | g | 夹持铣刀范围 | T |
|---------------|-------|-----|-----|----|----|--------|-------|-----|----------|-----------|
| NT30-MTB1-50 | 118.4 | 50 | 39 | 11 | 25 | 12.065 | 31.75 | M6 | φ10-φ14 | M12*1.75P |
| NT30-MTB2-50 | 118.4 | 50 | 39 | 11 | 32 | 17.780 | 31.75 | M10 | φ16-φ22 | M12*1.75P |
| NT30-MTB3-70 | 138.4 | 70 | 59 | 11 | 40 | 23.825 | 31.75 | M12 | φ24-φ32 | M12*1.75P |
| 规格 / 型号 Model | L | L1 | L2 | L3 | D | d1 | G | g | 夹持铣刀范围 | T |
| NT40-MTB1-50 | 143.4 | 50 | 39 | 11 | 25 | 12.065 | 44.45 | M6 | φ10-φ14 | M16*2.0P |
| NT40-MTB2-50 | 143.4 | 50 | 39 | 11 | 32 | 17.780 | 44.45 | M10 | φ16-φ22 | M16*2.0P |
| NT40-MTB3-65 | 158.4 | 65 | 54 | 11 | 40 | 23.825 | 44.45 | M12 | φ24-φ32 | M16*2.0P |
| NT40-MTB4-90 | 183.4 | 90 | 79 | 11 | 48 | 31.267 | 44.45 | M16 | φ32-φ50 | M16*2.0P |
| 规格 / 型号 Model | L | L1 | L2 | L3 | D | d1 | G | g | 夹持铣刀范围 | T |
| NT50-MTB1-45 | 171.8 | 45 | 30 | 15 | 25 | 12.065 | 69.85 | M6 | φ10-φ14 | M24*3.0P |
| NT50-MTB2-55 | 181.8 | 55 | 40 | 15 | 32 | 17.780 | 69.85 | M10 | φ16-φ22 | M24*3.0P |
| NT50-MTB3-65 | 191.8 | 65 | 50 | 15 | 40 | 23.825 | 69.85 | M12 | φ24-φ32 | M24*3.0P |
| NT50-MTB4-70 | 196.8 | 70 | 55 | 15 | 48 | 31.267 | 69.85 | M16 | φ32-φ50 | M24*3.0P |
| NT50-MTB5-105 | 231.8 | 105 | 90 | 15 | 70 | 44.399 | 69.85 | M20 | φ40-φ75 | M24*3.0P |
| NT50-MTB6-170 | 296.8 | 170 | 155 | 15 | 85 | 63.348 | 69.85 | M24 | φ75-φ100 | M24*3.0P |
| NT50-MTB6-270 | 396.8 | 270 | 255 | 15 | 85 | 63.348 | 69.85 | M24 | φ75-φ100 | M24*3.0P |

特点:

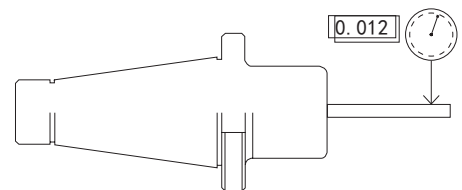
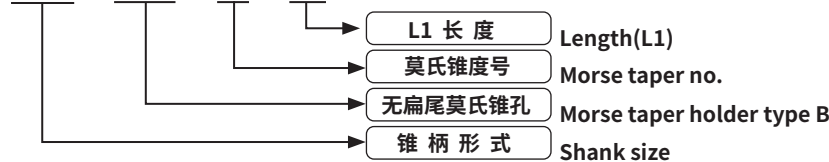
注:

- ◎ 本体锥柄规格: GB3837/DIN2080
- ◎ 刀柄用于莫氏锥柄铣刀

Features:

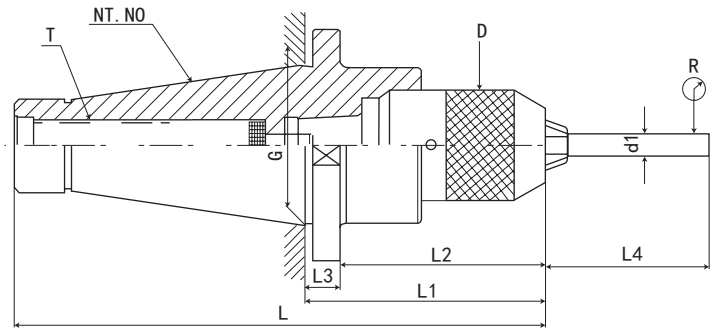
- ◎ Spindle conicity standard: GB3837/DIN2080
- ◎ Dimensions

NT40 - MTB - 2 - 50



NT-APU 一体式钻夹头刀柄

NT-APU DRILL CHUCK HOLDER



P-131



P-158

| 规格 / 型号 Model | L | L1 | L2 | L3 | L4 | R | D | d1 | G | T | 夹持范围 Range |
|----------------|-------|-----|-----|----|----|------|----|----|-------|-----------|------------|
| NT30-APU08-80 | 148.4 | 80 | 69 | 11 | 55 | 0.08 | 37 | 8 | 31.75 | M12*1.75P | 0-8mm |
| NT30-APU13-100 | 168.4 | 100 | 89 | 11 | 75 | 0.08 | 50 | 13 | 31.75 | M12*1.75P | 1-13mm |
| NT30-APU16-110 | 178.4 | 110 | 99 | 11 | 80 | 0.08 | 57 | 16 | 31.75 | M12*1.75P | 1-16mm |
| NT40-APU08-80 | 173.4 | 80 | 69 | 11 | 55 | 0.08 | 37 | 8 | 44.45 | M16*2.0P | 0-8mm |
| NT40-APU13-100 | 193.4 | 100 | 89 | 11 | 75 | 0.08 | 50 | 13 | 44.45 | M16*2.0P | 1-13mm |
| NT40-APU16-110 | 203.4 | 110 | 99 | 11 | 80 | 0.08 | 57 | 16 | 44.45 | M16*2.0P | 1-16mm |
| NT50-APU13-110 | 236.8 | 110 | 95 | 15 | 75 | 0.08 | 50 | 13 | 69.85 | M24*3.0P | 1-13mm |
| NT50-APU16-120 | 246.8 | 120 | 105 | 15 | 80 | 0.08 | 57 | 16 | 69.85 | M24*3.0P | 1-16mm |

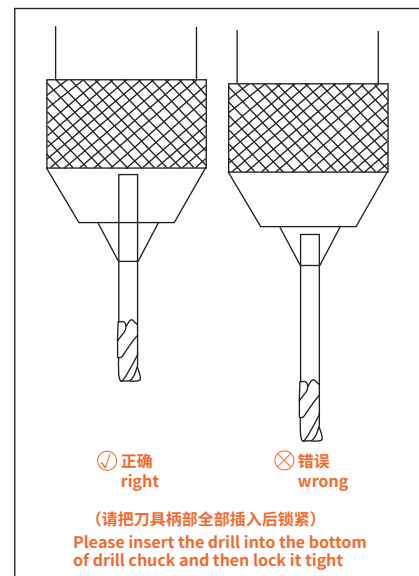
特点:

注:

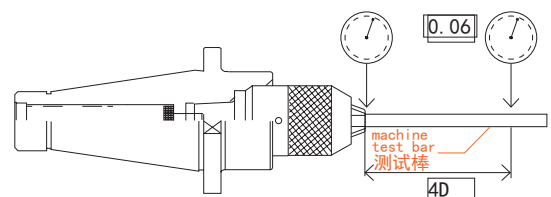
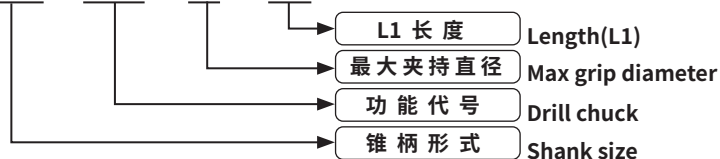
- ◎ 一体式结构, 减少了连接误差精度, 内部用螺纹结构, 就不会出现夹头脱落现象
- ◎ 用于钻头、铰刀等夹持, 不可用于丝锥和铣刀夹持
- ◎ 一体刀柄缩短刀具长度, 提高加工精度, 增加使用寿命
- ◎ 有自锁功能, 附带专用扳手, 请勿用其它工具

Features:

- ◎ The shank and keyless drill chuck are combined together so as to avoid the drill chuck slipping out for heavy-duty and high speed cutting and improve the precision.
- ◎ Not be used for gripping draw bolt and milling tools, instead of drill bit and reamer.
- ◎ APU drill chuck shorten the length while length the working life of tool.
- ◎ Each APU drill chuck attached 1pc APU wrench.



NT40 - APU - 13 - 110



CNC TOOLS
数控刀柄

数控刀柄系列 CNC TOOL SYSTEMS

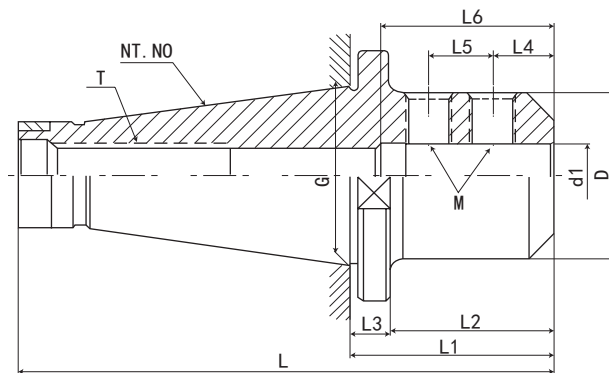
NT-SLN 侧固式刀柄

NT-SLN SIDE LOCK END MILL HOLDER

CNC TOOLS
数控刀柄



P.003



| 规格 / 型号 Model | L | L1 | L2 | L3 | L4 | L5 | L6 | D | d1 | G | T | M | 重量 KGS |
|------------------|-------|-----|-----|----|------|----|-----|----|------|-------|-----------|-----------|--------|
| NT30-SLN6-40 | 108.4 | 40 | 29 | 11 | 18 | - | 50 | 25 | 6 | 31.75 | M12*1.75P | M5*0.8P | 0.5 |
| NT30-SLN8-40 | 108.4 | 40 | 29 | 11 | 18 | - | 50 | 28 | 8 | 31.75 | M12*1.75P | M6*1.0P | 0.6 |
| NT30-SLN10-40 | 108.4 | 40 | 29 | 11 | 20 | - | 55 | 35 | 10 | 31.75 | M12*1.75P | M8*1.25 | 0.6 |
| NT30-SLN12-40 | 108.4 | 40 | 29 | 11 | 22.5 | - | 60 | 42 | 12 | 31.75 | M12*1.75P | M10*1.5P | 0.65 |
| NT30-SLN16-50 | 118.4 | 50 | 39 | 11 | 24 | - | 100 | 45 | 16 | 31.75 | M12*1.75P | M12*1.75P | 0.75 |
| NT30-SLN16-80 | 148.4 | 80 | 69 | 11 | 24 | 18 | 100 | 45 | 16 | 31.75 | M12*1.75P | M12*1.75P | 0.8 |
| NT30-SLN20-63 | 131.4 | 63 | 52 | 11 | 25 | - | 100 | 50 | 20 | 31.75 | M12*1.75P | M12*1.75P | 1.1 |
| NT30-SLN20-80 | 148.4 | 80 | 69 | 11 | 25 | 20 | 100 | 50 | 20 | 31.75 | M12*1.75P | M12*1.75P | 1.2 |
| NT30-SLN25-80 | 148.4 | 80 | 69 | 11 | 24 | 25 | 110 | 65 | 25 | 31.75 | M12*1.75P | M12*1.75P | 1.25 |
| 规格 / 型号 Model | L | L1 | L2 | L3 | L4 | L5 | L6 | D | d1 | G | T | M | 重量 KGS |
| NT40-SLN6-50 | 143.4 | 50 | 39 | 11 | 18 | - | 50 | 25 | 6 | 44.45 | M16*2.0P | M5*0.8P | 0.9 |
| NT40-SLN8-50 | 143.4 | 50 | 39 | 11 | 18 | - | 50 | 28 | 8 | 44.45 | M16*2.0P | M6*1.0P | 0.95 |
| NT40-SLN10-50 | 143.4 | 50 | 39 | 11 | 20 | - | 55 | 35 | 10 | 44.45 | M16*2.0P | M8*1.25 | 1.1 |
| NT40-SLN12-50 | 143.4 | 50 | 39 | 11 | 22.5 | - | 60 | 42 | 12 | 44.45 | M16*2.0P | M10*1.5P | 1.12 |
| NT40-SLN16-63 | 156.4 | 63 | 52 | 11 | 24 | - | 100 | 45 | 16 | 44.45 | M16*2.0P | M12*1.75P | 1.4 |
| NT40-SLN16-80 | 173.4 | 80 | 69 | 11 | 24 | 18 | 100 | 45 | 16 | 44.45 | M16*2.0P | M12*1.75P | 1.9 |
| NT40-SLN20-63 | 156.4 | 63 | 52 | 11 | 25 | - | 100 | 50 | 20 | 44.45 | M16*2.0P | M12*1.75P | 1.45 |
| NT40-SLN20-80 | 173.4 | 80 | 69 | 11 | 25 | 20 | 100 | 50 | 20 | 44.45 | M16*2.0P | M12*1.75P | 2 |
| NT40-SLN25-80 | 173.4 | 80 | 69 | 11 | 24 | 25 | 110 | 65 | 25 | 44.45 | M16*2.0P | M12*1.75P | 2.1 |
| NT40-SLN32-80 | 173.4 | 80 | 69 | 11 | 24 | 28 | 120 | 70 | 32 | 44.45 | M16*2.0P | M16*2.0P | 2.5 |
| NT40-SLN40-100 | 193.4 | 100 | 89 | 11 | 30 | 32 | 120 | 80 | 40 | 44.45 | M16*2.0P | M16*2.0P | 2.8 |
| 规格 / 型号 Model | L | L1 | L2 | L3 | L4 | L5 | L6 | D | d1 | G | T | M | 重量 KGS |
| NT50-SLN6-63 | 189.8 | 63 | 48 | 15 | 18 | - | 50 | 25 | 6 | 69.85 | M24*3.0P | M5*0.8P | 2.9 |
| NT50-SLN8-63 | 189.8 | 63 | 48 | 15 | 18 | - | 50 | 28 | 8 | 69.85 | M24*3.0P | M6*1.0P | 3 |
| NT50-SLN10-63 | 189.8 | 63 | 48 | 15 | 20 | - | 55 | 35 | 10 | 69.85 | M24*3.0P | M8*1.25 | 3.2 |
| NT50-SLN12-63 | 189.8 | 63 | 48 | 15 | 22.5 | - | 60 | 42 | 12 | 69.85 | M24*3.0P | M10*1.5P | 3.3 |
| NT50-SLN16-63 | 189.8 | 63 | 48 | 15 | 24 | - | 100 | 45 | 16 | 69.85 | M24*3.0P | M12*1.75P | 3.5 |
| NT50-SLN16-90 | 216.8 | 90 | 75 | 15 | 24 | 18 | 100 | 45 | 16 | 69.85 | M24*3.0P | M12*1.75P | 3.8 |
| NT50-SLN20-63 | 189.8 | 63 | 48 | 15 | 25 | - | 100 | 50 | 20 | 69.85 | M24*3.0P | M12*1.75P | 3.6 |
| NT50-SLN20-90 | 216.8 | 90 | 75 | 15 | 25 | 20 | 100 | 50 | 20 | 69.85 | M24*3.0P | M12*1.75P | 3.8 |
| NT50-SLN25-80 | 206.8 | 80 | 65 | 15 | 24 | 25 | 110 | 65 | 25 | 69.85 | M24*3.0P | M12*1.75P | 4.2 |
| NT50-SLN25-90 | 216.8 | 90 | 75 | 15 | 24 | 25 | 110 | 65 | 25 | 69.85 | M24*3.0P | M12*1.75P | 4.3 |
| NT50-SLN32-80 | 206.8 | 80 | 65 | 15 | 24 | 28 | 120 | 70 | 32 | 69.85 | M24*3.0P | M16*2.0P | 4.4 |
| NT50-SLN32-90 | 216.8 | 90 | 75 | 15 | 24 | 28 | 120 | 70 | 32 | 69.85 | M24*3.0P | M16*2.0P | 4.5 |
| NT50-SLN40-100 | 226.8 | 100 | 85 | 15 | 30 | 32 | 120 | 80 | 40 | 69.85 | M24*3.0P | M20*2.0P | 4.6 |
| NT50-SLN42-100 | 226.8 | 100 | 85 | 15 | 30 | 32 | 120 | 82 | 42 | 69.85 | M24*3.0P | M20*2.0P | 4.6 |
| NT50-SLN50-120 | 246.8 | 120 | 105 | 15 | 35 | 35 | 120 | 90 | 50 | 69.85 | M24*3.0P | M20*2.0P | 4.8 |
| NT50-SLN50.8-120 | 246.8 | 120 | 105 | 15 | 35 | 35 | 120 | 90 | 50.8 | 69.85 | M24*3.0P | M20*2.0P | 4.8 |

特点:

注:

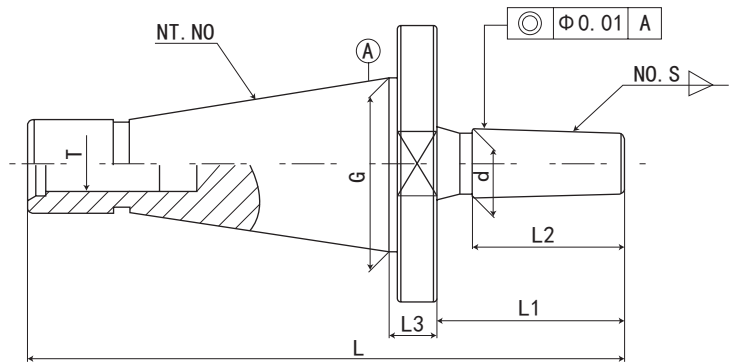
- ◎ 本体锥柄规格: GB3837/DIN2080
- ◎ 孔径公差 H5
- ◎ 不分孔径都为两个螺钉固定
- ◎ 刚性夹持, 用于重切削
- ◎ 侧固式刀柄被用作刀具的工具刀柄
- ◎ 装入刀具时, 刀具的槽口平面部分与刀柄的侧固螺钉对齐, 强力锁定

Features:

- ◎ Spindle conicity standard: GB3837/DIN2080
- ◎ Aperture tolerance:H5
- ◎ End Mill are held by one or two set screws.
- ◎ Used for remachining with rigidly grip.
- ◎ Face mill chuck used to be the holder of cutting tools.
- ◎ When attaching, cutting tools,with strong side aligned lock between the plane of the part and notch solid screws.

NT-7:24 钻接杆

NT-7:24 DRILL CHUCK ARBORS



P.131 P.158

| 规格 / 型号 Model | L | L1 | L2 | L3 | d | G | T | NO.S | 重量 KGS |
|---------------|-----|------|----|----|--------|-------|----------------------|------|--------|
| NT30-B10 | 104 | 24.6 | 20 | 11 | 10.94 | 31.75 | M12*1.75P | B10 | 0.325 |
| NT30-B12 | 108 | 28.6 | 25 | 11 | 12.065 | 31.75 | M12*1.75P | B12 | 0.33 |
| NT30-B16 | 116 | 36.6 | 32 | 11 | 15.733 | 31.75 | M12*1.75P | B16 | 0.372 |
| NT30-B18 | 124 | 44.6 | 40 | 11 | 17.78 | 31.75 | M12*1.75P | B18 | 0.393 |
| NT30-B22 | 133 | 53.6 | 48 | 11 | 21.793 | 31.75 | M12*1.75P | B22 | 0.46 |
| NT40-B10 | 132 | 27.6 | 20 | 11 | 10.94 | 44.45 | M16*2.0P | B10 | 0.801 |
| NT40-B12 | 136 | 31.6 | 25 | 11 | 12.065 | 44.45 | M16*2.0P | B12 | 0.809 |
| NT40-B16 | 143 | 38.6 | 32 | 11 | 15.733 | 44.45 | M16*2.0P | B16 | 0.848 |
| NT40-B18 | 151 | 46.6 | 40 | 11 | 17.78 | 44.45 | M16*2.0P | B18 | 0.869 |
| NT40-B22 | 160 | 55.6 | 48 | 11 | 21.793 | 44.45 | M16*2.0P | B22 | 0.936 |
| NT50-B10 | 170 | 28.2 | 20 | 15 | 10.94 | 69.85 | M24*3.0P | B10 | 2.684 |
| NT50-B12 | 174 | 32.2 | 25 | 15 | 12.065 | 69.85 | M24*3.0P | B12 | 2.676 |
| NT50-B16 | 182 | 40.2 | 32 | 15 | 15.733 | 69.85 | M24*3.0P | B16 | 2.723 |
| NT50-B18 | 195 | 53.2 | 40 | 15 | 17.78 | 69.85 | M24*3.0P | B18 | 2.744 |
| NT50-B22 | 200 | 58.2 | 48 | 15 | 21.793 | 69.85 | M24*3.0P | B22 | 2.811 |
| 规格 / 型号 Model | L | L1 | L2 | L3 | d | G | T | NO.S | 重量 KGS |
| NT30-J0 | 99 | 19.6 | 14 | 11 | 6.35 | 31.75 | M12*1.75P-1/2"-13UNC | J0 | 0.313 |
| NT30-J1 | 106 | 37.6 | 20 | 11 | 9.754 | 31.75 | M12*1.75P-1/2"-13UNC | J1 | 0.326 |
| NT30-J2S | 109 | 40.6 | 23 | 11 | 13.94 | 31.75 | M12*1.75P-1/2"-13UNC | J2S | 0.341 |
| NT30-J2 | 113 | 44.6 | 25 | 11 | 14.199 | 31.75 | M12*1.75P-1/2"-13UNC | J2 | 0.349 |
| NT30-J33 | 122 | 53.6 | 28 | 11 | 15.85 | 31.75 | M12*1.75P-1/2"-13UNC | J33 | 0.377 |
| NT30-J6 | 122 | 53.6 | 28 | 11 | 17.17 | 31.75 | M12*1.75P-1/2"-13UNC | J6 | 0.388 |
| NT30-J3 | 123 | 54.6 | 34 | 11 | 20.599 | 31.75 | M12*1.75P-1/2"-13UNC | J3 | 0.426 |
| NT30-J4 | 136 | 67.6 | 45 | 11 | 28.55 | 31.75 | M12*1.75P-1/2"-13UNC | J4 | 0.602 |
| NT30-J5 | 145 | 76.6 | 50 | 11 | 35.89 | 31.75 | M12*1.75P-1/2"-13UNC | J5 | 0.827 |
| NT40-J0 | 126 | 32.6 | 14 | 11 | 6.35 | 44.45 | M16*2.0P-5/8"-11UNC | J0 | 0.789 |
| NT40-J1 | 133 | 39.6 | 20 | 11 | 9.754 | 44.45 | M16*2.0P-5/8"-11UNC | J1 | 0.797 |
| NT40-J2S | 136 | 42.6 | 23 | 11 | 13.94 | 44.45 | M16*2.0P-5/8"-11UNC | J2S | 0.817 |
| NT40-J2 | 141 | 47.6 | 25 | 11 | 14.199 | 44.45 | M16*2.0P-5/8"-11UNC | J2 | 0.829 |
| NT40-J33 | 145 | 51.6 | 28 | 11 | 15.85 | 44.45 | M16*2.0P-5/8"-11UNC | J33 | 0.853 |
| NT40-J6 | 145 | 51.6 | 28 | 11 | 17.17 | 44.45 | M16*2.0P-5/8"-11UNC | J6 | 0.864 |
| NT40-J3 | 150 | 56.6 | 34 | 11 | 20.599 | 44.45 | M16*2.0P-5/8"-11UNC | J3 | 0.902 |
| NT40-J4 | 165 | 71.6 | 45 | 11 | 28.55 | 44.45 | M16*2.0P-5/8"-11UNC | J4 | 1.028 |
| NT40-J5 | 170 | 76.6 | 50 | 11 | 35.89 | 44.45 | M16*2.0P-5/8"-11UNC | J5 | 1.303 |
| NT50-J1 | 175 | 48.2 | 20 | 15 | 9.754 | 69.85 | M24*3.0P-1"-8UNC | J1 | 2.672 |
| NT50-J2S | 177 | 50.2 | 23 | 15 | 13.94 | 69.85 | M24*3.0P-1"-8UNC | J2S | 2.692 |
| NT50-J2 | 180 | 53.2 | 25 | 15 | 14.199 | 69.85 | M24*3.0P-1"-8UNC | J2 | 2.704 |
| NT50-J33 | 184 | 57.2 | 28 | 15 | 15.85 | 69.85 | M24*3.0P-1"-8UNC | J33 | 2.728 |
| NT50-J6 | 184 | 57.2 | 28 | 15 | 17.17 | 69.85 | M24*3.0P-1"-8UNC | J6 | 2.739 |
| NT50-J3 | 191 | 64.2 | 34 | 15 | 20.599 | 69.85 | M24*3.0P-1"-8UNC | J3 | 2.777 |
| NT50-J4 | 202 | 75.2 | 45 | 15 | 28.55 | 69.85 | M24*3.0P-1"-8UNC | J4 | 2.953 |
| NT50-J5 | 208 | 81.2 | 50 | 15 | 35.89 | 69.85 | M24*3.0P-1"-8UNC | J5 | 3.178 |

CNC TOOLS
数控刀柄