

# SBT

JIS B 6339

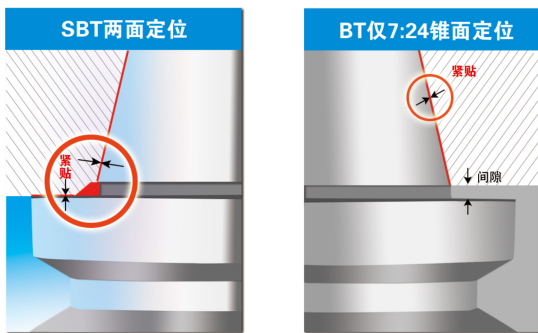
PRECISION TOOL HOLDERS SYSTEM



SBT 数控刀柄系列  
CNC TOOL SYSTEMS

## SBT 两面定位主轴系统

## SBT SPINDLE SYSTEM



- 通过确立完善的量规系统，实现了锥面、端面同时两面定位的系统。



### SBT 刀柄的各种优点：

- 提高加工表面光洁度和加工尺寸精度
- 提高 ATC 自动换刀的重重复精度
- 延长刀具寿命
- 高速旋转时 Z 轴方向尺寸稳定
- 高刚性 适合重切削
- 提高镗孔加工的圆度

### 拉入量对于端面紧贴很重要！！

刀柄在未被拉紧时，与主轴端面有微小间隙。通过拉紧装置拉入，主轴因弹性形变产生扩张，实现端面完全贴紧。因此，确保端面紧贴的拉入量非常重要。

《参考值》

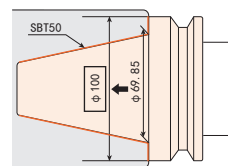
| 主轴规格 | 拉紧力    | 拉入量  |
|------|--------|------|
| #40  | 800Kg  | 20μm |
| #50  | 2000Kg | 20μm |

上表中的数值仅供参考，拉入量因主轴形状及紧固机构而异。（本公司加工中心的实测值）

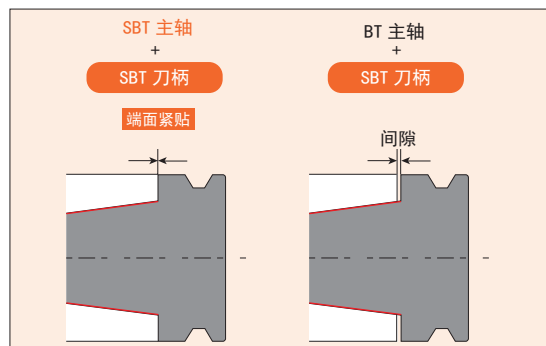
### 增加刀柄的基准直径，刚性增强。

根据力学原理，基准直径越大刚性越强，普通的 BT 刀柄的基准直径是锥柄的大端直径、而端面紧贴的 SBT 系统的基准直径是法兰外径。因此，SBT 刀柄刚性有了显著增强。

|         |        |      |
|---------|--------|------|
| BT30 锥柄 | φ31.75 | φ46  |
| BT40 锥柄 | φ44.45 | φ63  |
| BT50 锥柄 | φ69.85 | φ100 |



### “SBT 主轴”与“SBT 刀柄”的最强组合

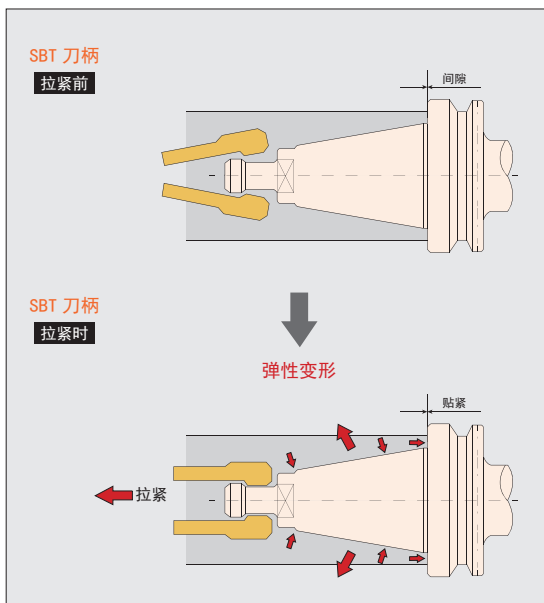


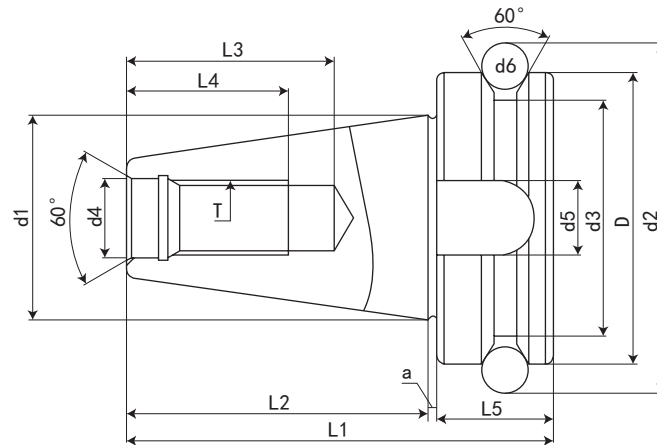
刀柄除端面位置尺寸外，其他尺寸均以 MAS-BT 规格为标准。

SBT 主轴系统通过组合 SBT 刀柄与 SBT 主轴，可最大限度地发挥两面定位的性能。SBT 刀柄也可使用原有标准规格的 BT 主轴，但这种情况下没有两面定位功能。为了发挥两面定位的优异性能，请在 SBT 主轴中使用 SBT 刀柄。另外，使用 SBT 刀柄以外的两面定位刀柄时，可能会损伤机床主轴，敬请注意。

建议在 SBT 主轴中使用 SBT 刀柄。

请勿在 SBT 主轴中混用 SBT 刀柄和 BT 刀柄。





| 规格 / 型号 Model | D<br>h8 | d1    | d2     | d3 | d4<br>H8 | d5<br>H12 | d6 | L1    | L2<br>±0.2 | L3<br>Min | L4<br>Min | L5   | a<br>0<br>-0.005 | T<br>6H   |
|---------------|---------|-------|--------|----|----------|-----------|----|-------|------------|-----------|-----------|------|------------------|-----------|
| SBT30         | 46      | 31.75 | 56.14  | 38 | 12.5     | 16.1      | 8  | 70.4  | 48.4       | 34        | 24        | 21   | 1                | M12*1.75P |
| SBT40         | 63      | 44.45 | 75.679 | 53 | 17       | 16.1      | 10 | 92.4  | 65.4       | 70        | 30        | 26   | 1                | M16*2.0P  |
| SBT50         | 100     | 69.85 | 119.02 | 83 | 25       | 25.7      | 15 | 139.8 | 101.8      | 90        | 45        | 36.5 | 1.5              | M24*3.0P  |

特点:

- ◎ 锥度精度: <AT3
- ◎ 基本材质: JIS-SCM415 or JIS SNCM220 or JIS SNCM439
- ◎ 硬度: HRC56° ~58° 渗碳深度 >0.8mm
- ◎ 真圆度: <0.8um
- ◎ 表面粗糙度: Ra<0.5um
- ◎ 刀柄本体可另外指定: 通过 V 型法兰端出水规格 (DIN-69871-AD+B)
- ◎ ER、EOC、FMA、FMB、MLC、MLD、MLT、SCK、SFC、SKS、SLN (DIN、FID、JIS)、SOM、TG 皆符合: 通过刀柄本体中心出水规格 (DIN-69871-AD)
- ◎ 刀柄有预设标准动平衡 G6.3, 可另外指定精密动平衡 G2.5
- ◎ 本体规范: BIG-PLUS

Features:

- ◎ Taper tolerance<AT3
- ◎ Basic Material:JIS-SCM415
- ◎ Hardness>HRC 56° Carbon depth>0.8mm
- ◎ Roundness<0.8um
- ◎ Surface roughness:Ra<0.5um
- ◎ If it is suitable for center coolant standard(DIN-69871-AD or B),it can be ordered
- ◎ ER、EOC、FMA、FMB、MLC、MLD、MLT、SCK、SFC、SKS、SLN(DIN、FID、JIS)、SOM、TG Are in compliance with:Water through the chuck body center type(DIN-69871-AD)
- ◎ The shank has pre-balance at G6.3,and can provide percision balance at G2.5,made by request
- ◎ Shank body standard:BIG-PLUS



## SBT30-PHC 液压刀柄

## SBT30-PHC HYDRAULIC TOOL HOLDER



FIG. 1

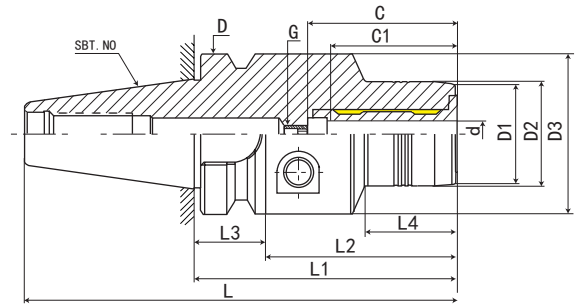
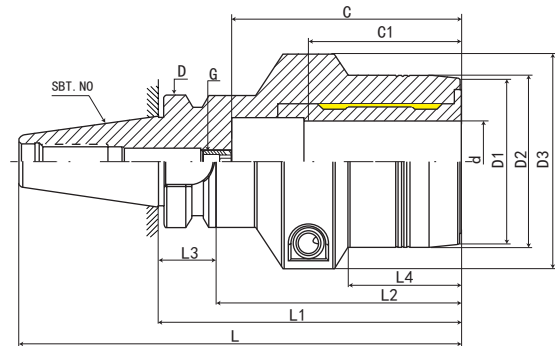
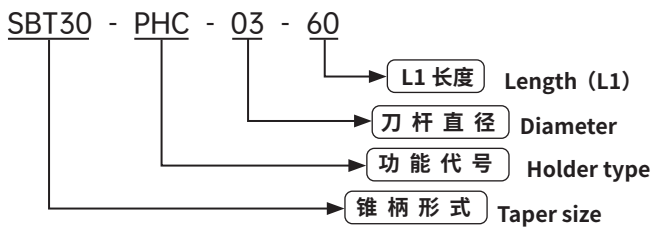


FIG. 2



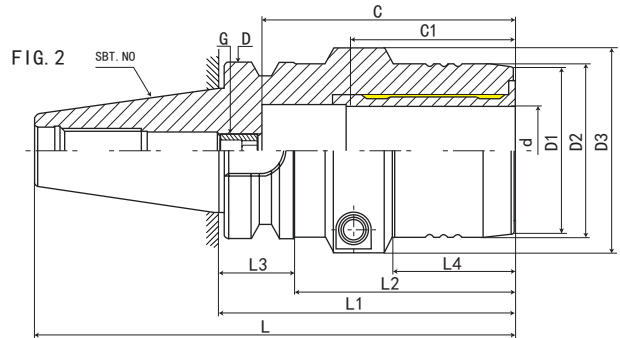
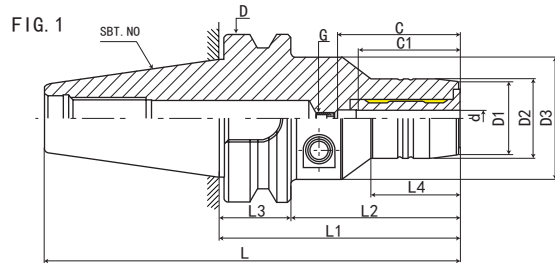
| 型号 Model          | L     | L1  | L2 | L3 | L4 | D  | D1 | D2 | D3 | d     | 最大插入深度 C<br>Max. insertion depth | 最少插入深度 C1<br>Min insertion depth | G        | FIG | 重量<br>KGS |
|-------------------|-------|-----|----|----|----|----|----|----|----|-------|----------------------------------|----------------------------------|----------|-----|-----------|
| SBT30-PHC03-60    | 108.4 | 60  | 38 | 22 | 28 | 46 | 20 | 23 | 45 | 3     | *                                | 18                               | *        | 1   | 0.75      |
| SBT30-PHC3.175-60 | 108.4 | 60  | 38 | 22 | 28 | 46 | 20 | 23 | 45 | 3.175 | *                                | 18                               | *        | 1   | 0.75      |
| SBT30-PHC04-60    | 108.4 | 60  | 38 | 22 | 28 | 46 | 21 | 24 | 45 | 4     | *                                | 24                               | *        | 1   | 0.75      |
| SBT30-PHC05-60    | 108.4 | 60  | 38 | 22 | 28 | 46 | 22 | 25 | 45 | 5     | *                                | 26                               | *        | 1   | 0.75      |
| SBT30-PHC06-70    | 118.4 | 70  | 48 | 22 | 28 | 46 | 23 | 26 | 45 | 6     | 37                               | 27                               | M5*0.8P  | 1   | 0.8       |
| SBT30-PHC08-70    | 118.4 | 70  | 48 | 22 | 28 | 46 | 25 | 28 | 45 | 8     | 37                               | 27                               | M6*1.0P  | 1   | 0.85      |
| SBT30-PHC10-75    | 123.4 | 75  | 53 | 22 | 36 | 46 | 27 | 30 | 45 | 10    | 41                               | 31                               | M8*1.0P  | 1   | 0.85      |
| SBT30-PHC12-75    | 123.4 | 75  | 53 | 22 | 36 | 46 | 29 | 32 | 45 | 12    | 46                               | 36                               | M10*1.0P | 1   | 0.85      |
| SBT30-PHC14-85    | 133.4 | 85  | 63 | 22 | 44 | 46 | 31 | 34 | 45 | 14    | 46                               | 36                               | M10*1.0P | 1   | 0.95      |
| SBT30-PHC16-90    | 138.4 | 90  | 68 | 22 | 48 | 46 | 35 | 38 | 45 | 16    | 52                               | 39                               | M12*1.0P | 1   | 1.05      |
| SBT30-PHC18-90    | 138.4 | 90  | 68 | 22 | 48 | 46 | 37 | 40 | 45 | 18    | 52                               | 39                               | M12*1.0P | 1   | 1.1       |
| SBT30-PHC20-90    | 138.4 | 90  | 68 | 22 | 48 | 46 | 39 | 42 | 45 | 20    | 52                               | 41                               | M16*1.0P | 1   | 1.15      |
| SBT30-PHC25-105   | 153.4 | 105 | 83 | 22 | 44 | 46 | 52 | 55 | 63 | 25    | 80                               | 47                               | M16*1.0P | 2   | 1.65      |
| SBT30-PHC32-105   | 153.4 | 105 | 83 | 22 | 39 | 46 | 57 | 60 | 68 | 32    | 80                               | 51                               | M16*1.0P | 2   | 1.8       |



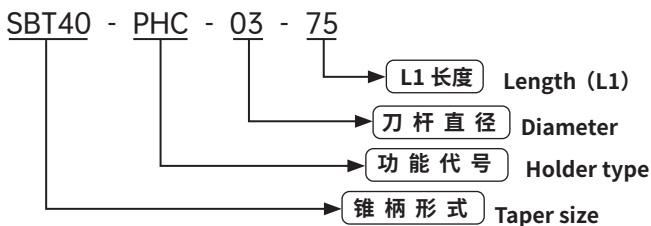


# SBT40-PHC 液压刀柄

# SBT40-PHC HYDRAULIC TOOL HOLDER

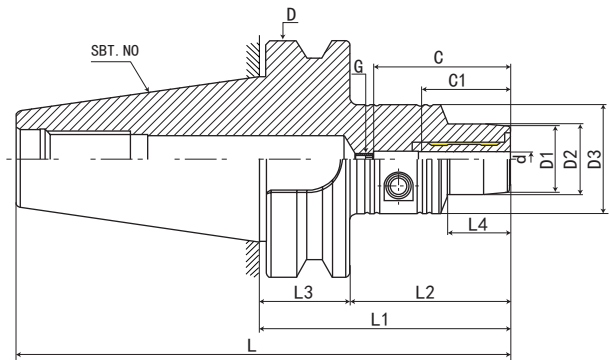


| 型号 Model          | L     | L1  | L2 | L3 | L4 | D  | D1 | D2 | D3 | d     | 最大插入深度 C<br>Max. insertion depth | 最少插入深度 C1<br>Min insertion depth | G        | FIG | 重量<br>KGS |
|-------------------|-------|-----|----|----|----|----|----|----|----|-------|----------------------------------|----------------------------------|----------|-----|-----------|
| SBT40-PHC03-75    | 140.4 | 75  | 48 | 27 | 26 | 63 | 20 | 23 | 50 | 3     | *                                | 18                               | *        | 1   | 1.28      |
| SBT40-PHC03-90    | 155.4 | 90  | 63 | 27 | 29 | 63 | 20 | 23 | 50 | 3     | *                                | 18                               | *        | 1   | 1.38      |
| SBT40-PHC3.175-75 | 140.4 | 75  | 48 | 27 | 26 | 63 | 20 | 23 | 50 | 3.175 | *                                | 18                               | *        | 1   | 1.28      |
| SBT40-PHC3.175-90 | 155.4 | 90  | 63 | 27 | 29 | 63 | 20 | 23 | 50 | 3.175 | *                                | 18                               | *        | 1   | 1.38      |
| SBT40-PHC04-75    | 140.4 | 75  | 48 | 27 | 26 | 63 | 21 | 24 | 50 | 4     | *                                | 24                               | *        | 1   | 1.28      |
| SBT40-PHC04-90    | 155.4 | 90  | 63 | 27 | 29 | 63 | 21 | 24 | 50 | 4     | *                                | 24                               | *        | 1   | 1.38      |
| SBT40-PHC05-75    | 140.4 | 75  | 48 | 27 | 26 | 63 | 22 | 25 | 50 | 5     | *                                | 26                               | *        | 1   | 1.3       |
| SBT40-PHC05-90    | 155.4 | 90  | 63 | 27 | 29 | 63 | 22 | 25 | 50 | 5     | *                                | 26                               | *        | 1   | 1.4       |
| SBT40-PHC06-75    | 140.4 | 75  | 48 | 27 | 26 | 63 | 23 | 26 | 50 | 6     | 37                               | 27                               | M5*0.8P  | 1   | 1.32      |
| SBT40-PHC06-90    | 155.4 | 90  | 63 | 27 | 29 | 63 | 23 | 26 | 50 | 6     | 37                               | 27                               | M5*0.8P  | 1   | 1.41      |
| SBT40-PHC08-75    | 140.4 | 75  | 48 | 27 | 26 | 63 | 25 | 28 | 50 | 8     | 37                               | 27                               | M6*1.0P  | 1   | 1.36      |
| SBT40-PHC08-90    | 155.4 | 90  | 63 | 27 | 30 | 63 | 25 | 28 | 50 | 8     | 37                               | 27                               | M6*1.0P  | 1   | 1.46      |
| SBT40-PHC10-75    | 140.4 | 75  | 48 | 27 | 26 | 63 | 27 | 30 | 50 | 10    | 41                               | 31                               | M8*1.0P  | 1   | 1.43      |
| SBT40-PHC10-90    | 155.4 | 90  | 63 | 27 | 35 | 63 | 27 | 30 | 50 | 10    | 41                               | 31                               | M8*1.0P  | 1   | 1.57      |
| SBT40-PHC12-75    | 140.4 | 75  | 48 | 27 | 26 | 63 | 29 | 32 | 50 | 12    | 46                               | 36                               | M10*1.0P | 1   | 1.46      |
| SBT40-PHC12-90    | 155.4 | 90  | 63 | 27 | 40 | 63 | 29 | 32 | 50 | 12    | 46                               | 36                               | M10*1.0P | 1   | 1.62      |
| SBT40-PHC14-75    | 140.4 | 75  | 48 | 27 | 26 | 63 | 31 | 34 | 50 | 14    | 46                               | 36                               | M10*1.0P | 1   | 1.48      |
| SBT40-PHC14-90    | 155.4 | 90  | 63 | 27 | 40 | 63 | 31 | 34 | 50 | 14    | 46                               | 36                               | M10*1.0P | 1   | 1.68      |
| SBT40-PHC16-75    | 140.4 | 75  | 48 | 27 | 26 | 63 | 35 | 38 | 50 | 16    | 75                               | 39                               | M12*1.0P | 1   | 1.51      |
| SBT40-PHC16-90    | 155.4 | 90  | 63 | 27 | 45 | 63 | 35 | 38 | 50 | 16    | 75                               | 39                               | M12*1.0P | 1   | 1.7       |
| SBT40-PHC18-75    | 140.4 | 75  | 48 | 27 | 26 | 63 | 37 | 40 | 50 | 18    | 75                               | 39                               | M12*1.0P | 1   | 1.51      |
| SBT40-PHC18-90    | 155.4 | 90  | 63 | 27 | 46 | 63 | 37 | 40 | 50 | 18    | 75                               | 39                               | M12*1.0P | 1   | 1.7       |
| SBT40-PHC20-75    | 140.4 | 75  | 48 | 27 | 26 | 63 | 39 | 42 | 50 | 20    | 80                               | 41                               | M16*1.0P | 1   | 1.52      |
| SBT40-PHC20-90    | 155.4 | 90  | 63 | 27 | 47 | 63 | 39 | 42 | 50 | 20    | 80                               | 41                               | M16*1.0P | 1   | 1.75      |
| SBT40-PHC25-105   | 170.4 | 105 | 78 | 27 | 50 | 63 | 52 | 55 | 63 | 25    | 80                               | 47                               | M16*1.0P | 1   | 2.05      |
| SBT40-PHC32-105   | 170.4 | 105 | 78 | 27 | 48 | 63 | 60 | 63 | 73 | 32    | 90                               | 51                               | M16*1.0P | 2   | 2.34      |
| SBT40-PHC40-120   | 185.4 | 120 | 93 | 27 |    | 63 |    |    |    | 40    | 90                               |                                  | M16*1.0P | 2   | 3         |
| SBT40-PHC42-120   | 185.4 | 120 | 93 | 27 |    | 63 |    |    |    | 42    | 90                               |                                  | M16*1.0P | 2   | 3         |



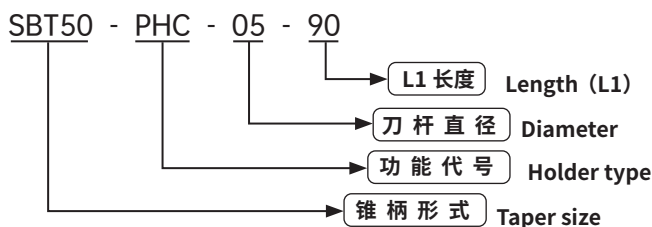
## SBT50-PHC 液压刀柄

## SBT50-PHC HYDRAULIC TOOL HOLDER



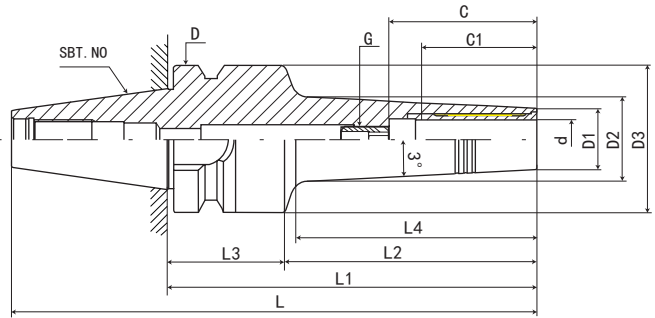
| 型号 Model        | L     | L1  | L2 | L3 | L4 | D   | D1 | D2 | D3   | d  | 最大插入深度 C<br>Max. insertion depth | 最少插入深度 C1<br>Min insertion depth | G        | 重量<br>KGS |
|-----------------|-------|-----|----|----|----|-----|----|----|------|----|----------------------------------|----------------------------------|----------|-----------|
| SBT50-PHC05-90  | 191.8 | 90  | 52 | 38 | 32 | 100 | 22 | 25 | 49.5 | 5  | *                                | 26                               | *        | 4.2       |
| SBT50-PHC05-120 | 221.8 | 120 | 82 | 38 | 44 | 100 | 22 | 25 | 49.5 | 5  | *                                | 26                               | *        | 4.5       |
| SBT50-PHC06-90  | 191.8 | 90  | 52 | 38 | 32 | 100 | 23 | 26 | 49.5 | 6  | 37                               | 27                               | M5*0.8P  | 4.2       |
| SBT50-PHC06-120 | 221.8 | 120 | 82 | 38 | 44 | 100 | 23 | 26 | 49.5 | 6  | 37                               | 27                               | M5*0.8P  | 4.5       |
| SBT50-PHC08-90  | 191.8 | 90  | 52 | 38 | 32 | 100 | 25 | 28 | 49.5 | 8  | 37                               | 27                               | M6*1.0P  | 4.2       |
| SBT50-PHC08-120 | 221.8 | 120 | 82 | 38 | 44 | 100 | 25 | 28 | 49.5 | 8  | 37                               | 27                               | M6*1.0P  | 4.5       |
| SBT50-PHC10-90  | 191.8 | 90  | 52 | 38 | 32 | 100 | 27 | 30 | 49.5 | 10 | 41                               | 31                               | M8*1.0P  | 4.2       |
| SBT50-PHC10-120 | 221.8 | 120 | 82 | 38 | 44 | 100 | 27 | 30 | 49.5 | 10 | 41                               | 31                               | M8*1.0P  | 4.5       |
| SBT50-PHC12-90  | 191.8 | 90  | 52 | 38 | 32 | 100 | 29 | 32 | 49.5 | 12 | 46                               | 36                               | M10*1.0P | 4.3       |
| SBT50-PHC12-120 | 221.8 | 120 | 82 | 38 | 44 | 100 | 29 | 32 | 49.5 | 12 | 46                               | 36                               | M10*1.0P | 4.5       |
| SBT50-PHC14-90  | 191.8 | 90  | 52 | 38 | 32 | 100 | 31 | 34 | 49.5 | 14 | 46                               | 36                               | M10*1.0P | 4.3       |
| SBT50-PHC14-120 | 221.8 | 120 | 82 | 38 | 44 | 100 | 31 | 34 | 49.5 | 14 | 46                               | 36                               | M10*1.0P | 4.6       |
| SBT50-PHC16-90  | 191.8 | 90  | 52 | 38 | 32 | 100 | 35 | 38 | 49.5 | 16 | 75                               | 39                               | M12*1.0P | 4.3       |
| SBT50-PHC16-120 | 221.8 | 120 | 82 | 38 | 48 | 100 | 35 | 38 | 49.5 | 16 | 75                               | 39                               | M12*1.0P | 4.6       |
| SBT50-PHC18-90  | 191.8 | 90  | 52 | 38 | 32 | 100 | 37 | 40 | 49.5 | 18 | 75                               | 39                               | M12*1.0P | 4.4       |
| SBT50-PHC18-120 | 221.8 | 120 | 82 | 38 | 48 | 100 | 37 | 40 | 49.5 | 18 | 75                               | 39                               | M12*1.0P | 4.6       |
| SBT50-PHC20-90  | 191.8 | 90  | 52 | 38 | 32 | 100 | 39 | 42 | 49.5 | 20 | 75                               | 41                               | M16*1.0P | 4.4       |
| SBT50-PHC20-120 | 221.8 | 120 | 82 | 38 | 48 | 100 | 39 | 42 | 49.5 | 20 | 75                               | 41                               | M16*1.0P | 4.7       |
| SBT50-PHC25-120 | 221.8 | 120 | 82 | 38 | 48 | 100 | 53 | 57 | 63   | 25 | 80                               | 47                               | M16*1.0P | 4.9       |
| SBT50-PHC32-120 | 221.8 | 120 | 82 | 38 | 48 | 100 | 58 | 62 | 70   | 32 | 90                               | 51                               | M16*1.0P | 5.2       |
| SBT50-PHC40-120 | 221.8 | 120 | 82 | 38 |    | 100 |    |    |      | 40 | 90                               | 61                               | M16*1.0P | 6         |
| SBT50-PHC42-120 | 221.8 | 120 | 82 | 38 |    | 100 |    |    |      | 42 | 90                               | 61                               | M16*1.0P | 6         |
| SBT50-PHC50-120 | 221.8 | 120 | 82 | 38 |    | 100 |    |    |      | 50 | 90                               | 61                               | M16*1.0P | 7         |

CNC TOOLS  
数控刀柄



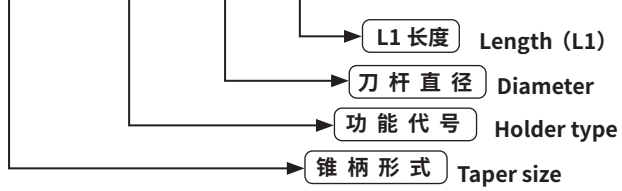
# SBT30-SPHC 液压刀柄

## SBT30-SPHC HYDRAULIC TOOL HOLDER



| 型号 Model         | L     | L1  | L2 | L3 | L4 | D  | D1 | D2 | D3 | d  | 最大插入深度 C<br>Max.insertiondepth | 最少插入深度 C1<br>Mininsertiondepth | G        | 重量 KGS |
|------------------|-------|-----|----|----|----|----|----|----|----|----|--------------------------------|--------------------------------|----------|--------|
| SBT30-SPHC03-85  | 133.4 | 85  | 63 | 22 | 42 | 46 | 11 |    | 45 | 3  | *                              | 18                             | *        | 1.1    |
| SBT30-SPHC04-85  | 133.4 | 85  | 63 | 22 | 42 | 46 | 11 |    | 45 | 4  | *                              | 24                             | *        | 1.1    |
| SBT30-SPHC05-85  | 133.4 | 85  | 63 | 22 | 42 | 46 | 12 |    | 45 | 5  | *                              | 26                             | *        | 1.4    |
| SBT30-SPHC06-115 | 163.4 | 115 | 93 | 22 | 74 | 46 | 13 |    | 45 | 6  | 37                             | 27                             | M5*0.8P  | 1.4    |
| SBT30-SPHC08-115 | 163.4 | 115 | 93 | 22 | 74 | 46 | 15 |    | 45 | 8  | 37                             | 27                             | M6*1.0P  | 1.4    |
| SBT30-SPHC10-115 | 163.4 | 115 | 93 | 22 | 74 | 46 | 17 |    | 45 | 10 | 41                             | 31                             | M8*1.0P  | 1.4    |
| SBT30-SPHC12-115 | 163.4 | 115 | 93 | 22 | 75 | 46 | 19 |    | 45 | 12 | 46                             | 36                             | M10*1.0P | 1.4    |

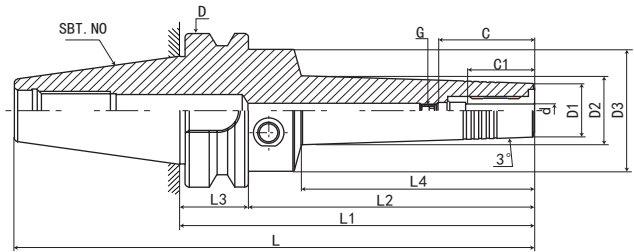
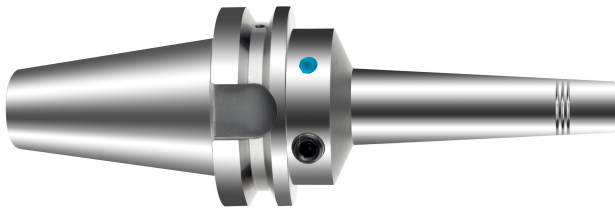
SBT30 - SPHC - 03 - 85



CNC TOOLS  
数控刀柄

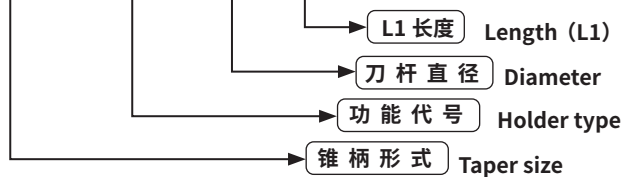
## SBT40-SPHC 液压刀柄

## SBT40-SPHC HYDRAULIC TOOL HOLDER



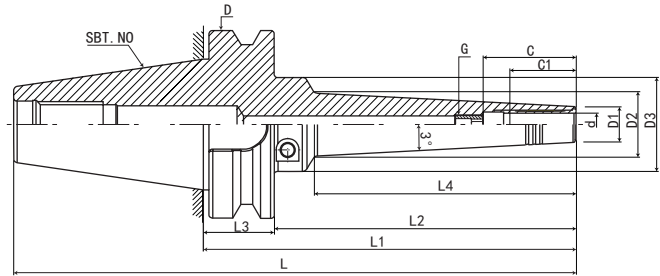
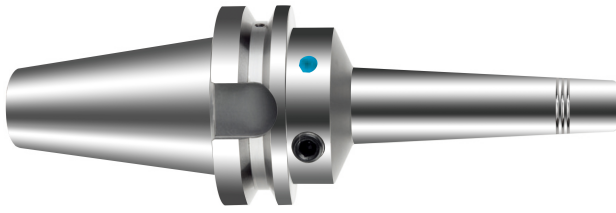
| 型号 Model         | L     | L1  | L2  | L3 | L4  | D  | D1 | D2 | D3 | d  | 最大插入深度 C<br>Max. insertion depth | 最少插入深度 C1<br>Min insertion depth | G        | 重量 KGS |
|------------------|-------|-----|-----|----|-----|----|----|----|----|----|----------------------------------|----------------------------------|----------|--------|
| SBT40-SPHC03-90  | 155.4 | 90  | 63  | 27 | 42  | 63 | 11 |    | 46 | 3  | *                                | 18                               | *        | 1.1    |
| SBT40-SPHC03-120 | 185.4 | 120 | 93  | 27 | 72  | 63 | 11 |    | 46 | 3  | *                                | 18                               | *        | 1.3    |
| SBT40-SPHC04-90  | 155.4 | 90  | 63  | 27 | 42  | 63 | 11 |    | 46 | 4  | *                                | 24                               | *        | 1.1    |
| SBT40-SPHC04-120 | 185.4 | 120 | 93  | 27 | 72  | 63 | 11 |    | 46 | 4  | *                                | 24                               | *        | 1.3    |
| SBT40-SPHC05-90  | 155.4 | 90  | 63  | 27 | 42  | 63 | 12 |    | 46 | 5  | *                                | 26                               | *        | 1.4    |
| SBT40-SPHC05-120 | 185.4 | 120 | 93  | 27 | 72  | 63 | 12 |    | 46 | 5  | *                                | 26                               | *        | 1.3    |
| SBT40-SPHC06-120 | 185.4 | 120 | 93  | 27 | 74  | 63 | 13 |    | 46 | 6  | 37                               | 27                               | M5*0.8P  | 1.4    |
| SBT40-SPHC06-150 | 215.4 | 150 | 123 | 27 | 104 | 63 | 13 |    | 46 | 6  | 37                               | 27                               | M5*0.8P  | 1.5    |
| SBT40-SPHC06-200 | 265.4 | 200 | 173 | 27 | 154 | 63 | 13 |    | 46 | 6  | 37                               | 27                               | M5*0.8P  | 1.7    |
| SBT40-SPHC08-120 | 185.4 | 120 | 93  | 27 | 74  | 63 | 15 |    | 46 | 8  | 37                               | 27                               | M6*1.0P  | 1.4    |
| SBT40-SPHC08-150 | 215.4 | 150 | 123 | 27 | 104 | 63 | 15 |    | 46 | 8  | 37                               | 27                               | M6*1.0P  | 1.5    |
| SBT40-SPHC08-200 | 265.4 | 200 | 173 | 27 | 154 | 63 | 15 |    | 46 | 8  | 37                               | 27                               | M6*1.0P  | 1.7    |
| SBT40-SPHC10-120 | 185.4 | 120 | 93  | 27 | 74  | 63 | 17 |    | 46 | 10 | 41                               | 31                               | M8*1.0P  | 1.4    |
| SBT40-SPHC10-150 | 215.4 | 150 | 123 | 27 | 104 | 63 | 17 |    | 46 | 10 | 41                               | 31                               | M8*1.0P  | 1.5    |
| SBT40-SPHC10-200 | 265.4 | 200 | 173 | 27 | 154 | 63 | 17 |    | 46 | 10 | 41                               | 31                               | M8*1.0P  | 1.7    |
| SBT40-SPHC12-120 | 185.4 | 120 | 93  | 27 | 75  | 63 | 19 |    | 46 | 12 | 46                               | 36                               | M10*1.0P | 1.4    |
| SBT40-SPHC12-150 | 215.4 | 150 | 123 | 27 | 105 | 63 | 19 |    | 46 | 12 | 46                               | 36                               | M10*1.0P | 1.5    |
| SBT40-SPHC12-200 | 265.4 | 200 | 173 | 27 | 154 | 63 | 19 |    | 46 | 12 | 46                               | 36                               | M10*1.0P | 1.7    |
| SBT40-SPHC14-120 | 185.4 | 120 | 93  | 27 | 75  | 63 | 21 |    | 46 | 14 | 46                               | 36                               | M10*1.0P | 1.4    |
| SBT40-SPHC14-150 | 215.4 | 150 | 123 | 27 | 105 | 63 | 21 |    | 46 | 14 | 46                               | 36                               | M10*1.0P | 1.5    |
| SBT40-SPHC14-200 | 265.4 | 200 | 173 | 27 | 154 | 63 | 21 |    | 46 | 14 | 46                               | 36                               | M10*1.0P | 1.7    |
| SBT40-SPHC16-120 | 185.4 | 120 | 93  | 27 | 75  | 63 | 23 |    | 50 | 16 | 49                               | 39                               | M12*1.0P | 1.5    |
| SBT40-SPHC16-150 | 215.4 | 150 | 123 | 27 | 105 | 63 | 23 |    | 50 | 16 | 49                               | 39                               | M12*1.0P | 1.6    |
| SBT40-SPHC16-200 | 265.4 | 200 | 173 | 27 | 154 | 63 | 23 |    | 50 | 16 | 49                               | 39                               | M12*1.0P | 1.8    |
| SBT40-SPHC18-120 | 185.4 | 120 | 93  | 27 | 75  | 63 | 25 |    | 50 | 18 | 49                               | 39                               | M12*1.0P | 1.5    |
| SBT40-SPHC18-150 | 215.4 | 150 | 123 | 27 | 105 | 63 | 25 |    | 50 | 18 | 49                               | 39                               | M12*1.0P | 1.6    |
| SBT40-SPHC18-200 | 265.4 | 200 | 173 | 27 | 154 | 63 | 25 |    | 50 | 18 | 49                               | 39                               | M12*1.0P | 1.8    |
| SBT40-SPHC20-120 | 185.4 | 120 | 93  | 27 | 75  | 63 | 27 |    | 50 | 20 | 51                               | 41                               | M16*1.0P | 1.6    |
| SBT40-SPHC20-150 | 215.4 | 150 | 123 | 27 | 105 | 63 | 27 |    | 50 | 20 | 51                               | 41                               | M16*1.0P | 1.7    |
| SBT40-SPHC20-200 | 265.4 | 200 | 173 | 27 | 154 | 63 | 27 |    | 50 | 20 | 51                               | 41                               | M16*1.0P | 1.9    |

SBT40 - SPHC - 03 - 90



# SBT50-SPHC 液压刀柄

## SBT50-SPHC HYDRAULIC TOOL HOLDER



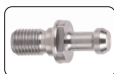
| 型号 Model         | L     | L1  | L2  | L3 | L4  | D   | D1 | D2 | D3 | d  | 最大插入深度 C<br>Max. insertion depth | 最少插入深度 C1<br>Min insertion depth | G        | 重量<br>KGS |
|------------------|-------|-----|-----|----|-----|-----|----|----|----|----|----------------------------------|----------------------------------|----------|-----------|
| SBT50-SPHC05-150 | 251.8 | 150 | 112 | 38 | 80  | 100 | 12 |    | 50 | 5  | *                                | 26                               | *        | 4.2       |
| SBT50-SPHC05-200 | 301.8 | 200 | 162 | 38 | 130 | 100 | 12 |    | 50 | 5  | *                                | 26                               | *        | 4.4       |
| SBT50-SPHC05-250 | 351.8 | 250 | 212 | 38 | 180 | 100 | 12 |    | 50 | 5  | *                                | 26                               | *        | 4.6       |
| SBT50-SPHC05-300 | 401.8 | 300 | 262 | 38 | 230 | 100 | 12 |    | 50 | 5  | *                                | 26                               | *        | 4.8       |
| SBT50-SPHC06-150 | 251.8 | 150 | 112 | 38 | 80  | 100 | 13 |    | 50 | 6  | 37                               | 27                               | M5*0.8P  | 4.2       |
| SBT50-SPHC06-200 | 301.8 | 200 | 162 | 38 | 130 | 100 | 13 |    | 50 | 6  | 37                               | 27                               | M5*0.8P  | 4.4       |
| SBT50-SPHC06-250 | 351.8 | 250 | 212 | 38 | 180 | 100 | 13 |    | 50 | 6  | 37                               | 27                               | M5*0.8P  | 4.6       |
| SBT50-SPHC06-300 | 401.8 | 300 | 262 | 38 | 230 | 100 | 13 |    | 50 | 6  | 37                               | 27                               | M5*0.8P  | 4.8       |
| SBT50-SPHC08-150 | 251.8 | 150 | 112 | 38 | 80  | 100 | 15 |    | 50 | 8  | 37                               | 27                               | M6*1.0P  | 4.2       |
| SBT50-SPHC08-200 | 301.8 | 200 | 162 | 38 | 130 | 100 | 15 |    | 50 | 8  | 37                               | 27                               | M6*1.0P  | 4.4       |
| SBT50-SPHC08-250 | 351.8 | 250 | 212 | 38 | 180 | 100 | 15 |    | 50 | 8  | 37                               | 27                               | M6*1.0P  | 4.6       |
| SBT50-SPHC08-300 | 401.8 | 300 | 262 | 38 | 230 | 100 | 15 |    | 50 | 8  | 37                               | 27                               | M6*1.0P  | 4.8       |
| SBT50-SPHC10-150 | 251.8 | 150 | 112 | 38 | 80  | 100 | 17 |    | 50 | 10 | 41                               | 31                               | M8*1.0P  | 4.3       |
| SBT50-SPHC10-200 | 301.8 | 200 | 162 | 38 | 130 | 100 | 17 |    | 50 | 10 | 41                               | 31                               | M8*1.0P  | 4.5       |
| SBT50-SPHC10-250 | 351.8 | 250 | 212 | 38 | 180 | 100 | 17 |    | 50 | 10 | 41                               | 31                               | M8*1.0P  | 4.7       |
| SBT50-SPHC10-300 | 401.8 | 300 | 262 | 38 | 230 | 100 | 17 |    | 50 | 10 | 41                               | 31                               | M8*1.0P  | 4.9       |
| SBT50-SPHC12-150 | 251.8 | 150 | 112 | 38 | 80  | 100 | 19 |    | 50 | 12 | 46                               | 36                               | M10*1.0P | 4.3       |
| SBT50-SPHC12-200 | 301.8 | 200 | 162 | 38 | 130 | 100 | 19 |    | 50 | 12 | 46                               | 36                               | M10*1.0P | 4.5       |
| SBT50-SPHC12-250 | 351.8 | 250 | 212 | 38 | 180 | 100 | 19 |    | 50 | 12 | 46                               | 36                               | M10*1.0P | 4.7       |
| SBT50-SPHC12-300 | 401.8 | 300 | 262 | 38 | 230 | 100 | 19 |    | 50 | 12 | 46                               | 36                               | M10*1.0P | 4.9       |
| SBT50-SPHC14-150 | 251.8 | 150 | 112 | 38 | 80  | 100 | 21 |    | 50 | 14 | 46                               | 36                               | M10*1.0P | 4.4       |
| SBT50-SPHC14-200 | 301.8 | 200 | 162 | 38 | 130 | 100 | 21 |    | 50 | 14 | 46                               | 36                               | M10*1.0P | 4.6       |
| SBT50-SPHC14-250 | 351.8 | 250 | 212 | 38 | 180 | 100 | 21 |    | 50 | 14 | 46                               | 36                               | M10*1.0P | 4.8       |
| SBT50-SPHC14-300 | 401.8 | 300 | 262 | 38 | 230 | 100 | 21 |    | 50 | 14 | 46                               | 36                               | M10*1.0P | 5         |
| SBT50-SPHC16-150 | 251.8 | 150 | 112 | 38 | 80  | 100 | 23 |    | 50 | 16 | 75                               | 39                               | M12*1.0P | 4.4       |
| SBT50-SPHC16-200 | 301.8 | 200 | 162 | 38 | 130 | 100 | 23 |    | 50 | 16 | 75                               | 39                               | M12*1.0P | 4.6       |
| SBT50-SPHC16-250 | 351.8 | 250 | 212 | 38 | 180 | 100 | 23 |    | 50 | 16 | 75                               | 39                               | M12*1.0P | 4.8       |
| SBT50-SPHC16-300 | 401.8 | 300 | 262 | 38 | 230 | 100 | 23 |    | 50 | 16 | 75                               | 39                               | M12*1.0P | 5         |
| SBT50-SPHC18-150 | 251.8 | 150 | 112 | 38 | 80  | 100 | 25 |    | 50 | 18 | 75                               | 39                               | M12*1.0P | 4.5       |
| SBT50-SPHC18-200 | 301.8 | 200 | 162 | 38 | 130 | 100 | 25 |    | 50 | 18 | 75                               | 39                               | M12*1.0P | 4.7       |
| SBT50-SPHC18-250 | 351.8 | 250 | 212 | 38 | 180 | 100 | 25 |    | 50 | 18 | 75                               | 39                               | M12*1.0P | 4.9       |
| SBT50-SPHC18-300 | 401.8 | 300 | 262 | 38 | 230 | 100 | 25 |    | 50 | 18 | 75                               | 39                               | M12*1.0P | 5.1       |
| SBT50-SPHC20-150 | 251.8 | 150 | 112 | 38 | 80  | 100 | 27 |    | 50 | 20 | 75                               | 41                               | M16*1.0P | 4.6       |
| SBT50-SPHC20-200 | 301.8 | 200 | 162 | 38 | 130 | 100 | 27 |    | 50 | 20 | 75                               | 41                               | M16*1.0P | 4.8       |
| SBT50-SPHC20-250 | 351.8 | 250 | 212 | 38 | 180 | 100 | 27 |    | 50 | 20 | 75                               | 41                               | M16*1.0P | 5         |
| SBT50-SPHC20-300 | 401.8 | 300 | 262 | 38 | 230 | 100 | 27 |    | 50 | 20 | 75                               | 41                               | M16*1.0P | 5.2       |

CNC TOOLS  
数控刀柄

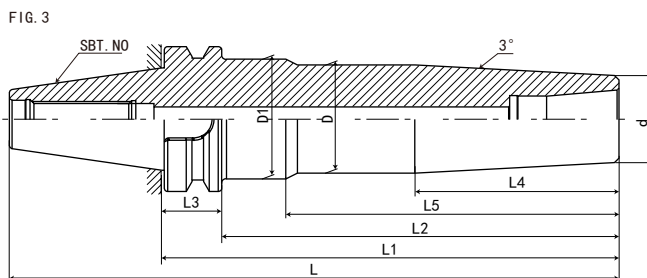
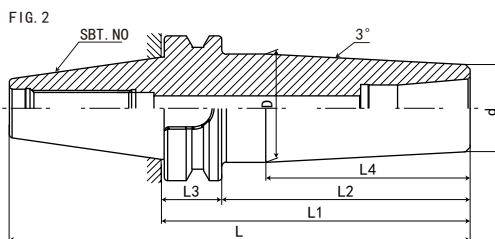
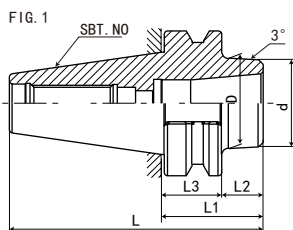


## SBT30/40-SLK 热缩基础柄

## SBT30/40-SLK SEMI-FINISHED SHRINK FIT CHUCK



P.129



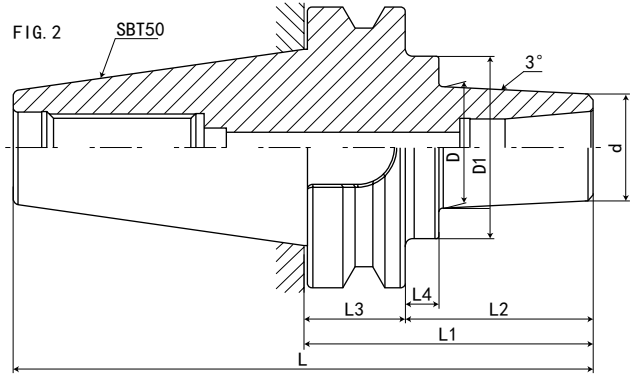
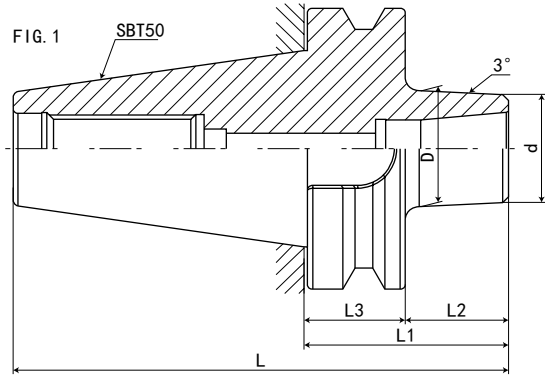
| 规格 Model        | L     | L1  | L2  | L3 | L4 | L5  | D    | D1 | d  | FIG | 重量 KGS |
|-----------------|-------|-----|-----|----|----|-----|------|----|----|-----|--------|
| SBT30-SLK12-45  | 93.4  | 45  | 24  | 22 | -  | -   | 40   | -  | 38 | 1   |        |
| SBT40-SLK12-45  | 110.4 | 45  | 19  | 27 | -  | -   | 40   | -  | 38 | 1   | 1.15   |
| SBT40-SLK12-75  | 140.4 | 75  | 49  | 27 | -  | -   | 42.4 | -  | 38 | 1   | 1.45   |
| SBT40-SLK12-135 | 200.4 | 135 | 109 | 27 | 89 | -   | 47   | -  | 38 | 2   | 2.2    |
| SBT40-SLK12-165 | 230.4 | 165 | 139 | 27 | 89 | -   | 47   | -  | 38 | 2   | 2.65   |
| SBT40-SLK12-200 | 265.4 | 200 | 174 | 27 | 89 | 145 | 47   | 52 | 38 | 3   | 3.25   |
| SBT40-SLK12-220 | 290.4 | 225 | 199 | 27 | 89 | 145 | 47   | 52 | 38 | 3   |        |

# SBT50-SLK 热缩基础柄

## SBT50-SLK SEMI-FINISHED SHRINK FIT CHUCK



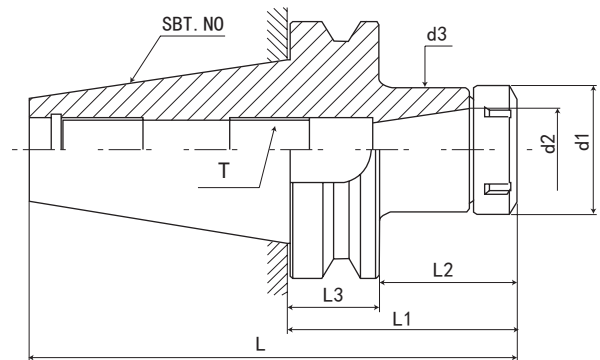
P.129



| 规格 Model        | L     | L1  | L2  | L3 | L4 | D    | D1   | d  | FIG | 重量 KGS |
|-----------------|-------|-----|-----|----|----|------|------|----|-----|--------|
| SBT50-SLK12-75  | 176.8 | 75  | 37  | 38 | -  | 41   | -    | 38 | 1   |        |
| SBT50-SLK12-105 | 206.8 | 105 | 67  | 38 | 12 | 43   | 65   | 38 | 2   |        |
| SBT50-SLK12-135 | 236.8 | 135 | 97  | 38 | 12 | 46.5 | 65   | 38 | 2   |        |
| SBT50-SLK12-225 | 326.8 | 225 | 187 | 38 | 12 | 56   | 65   | 38 | 2   |        |
| SBT50-SLK12-265 | 366.8 | 265 | 227 | 38 | 12 | 60   | 65   | 38 | 2   |        |
| SBT50-SLK12-315 | 416.8 | 315 | 277 | 38 | 12 | 65.5 | 65.5 | 38 | 2   |        |

## SBT-ER 弹性筒夹刀柄

## SBT-ER COLLET CHUCK



P.131



P.106



P.133

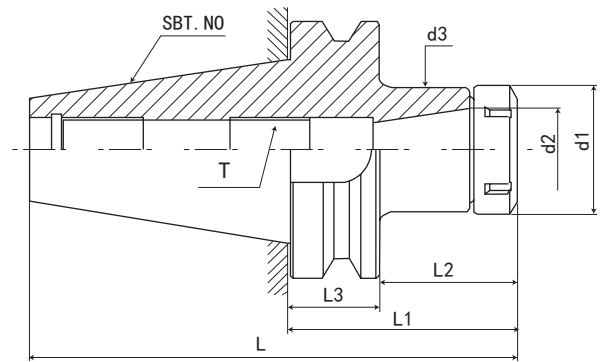


P.129

| 规格 / 型号 Model  | L     | L1  | L2  | L3 | d1 | d2 | d3 | T         | 夹持范围 Range | 重量 KGS |
|----------------|-------|-----|-----|----|----|----|----|-----------|------------|--------|
| SBT30-ER11-70  | 119.3 | 70  | 49  | 22 | 16 | 11 | 16 | M6*1.0P   | 1-7mm      | 0.53   |
| SBT30-ER11-100 | 149.3 | 100 | 79  | 22 | 16 | 11 | 16 | M6*1.0P   | 1-7mm      | 0.53   |
| SBT30-ER16-70  | 119.3 | 70  | 49  | 22 | 28 | 16 | 28 | M10*1.5P  | 1-10mm     | 0.61   |
| SBT30-ER16-100 | 149.3 | 100 | 79  | 22 | 28 | 16 | 28 | M10*1.5P  | 1-10mm     | 0.7    |
| SBT30-ER20-70  | 119.3 | 70  | 49  | 22 | 34 | 20 | 34 | M12*1.75P | 1-13mm     | 0.67   |
| SBT30-ER20-100 | 149.3 | 100 | 79  | 22 | 34 | 20 | 34 | M12*1.75P | 1-13mm     | 0.8    |
| SBT30-ER25-70  | 119.3 | 70  | 49  | 22 | 42 | 25 | 42 | M16*2.0P  | 1-16mm     | 0.7    |
| SBT30-ER25-100 | 149.3 | 100 | 79  | 22 | 42 | 25 | 42 | M16*2.0P  | 1-16mm     | 1      |
| SBT30-ER32-70  | 119.3 | 70  | 49  | 22 | 50 | 32 | 50 | M16*2.0P  | 1-20mm     | 0.78   |
| SBT30-ER32-100 | 149.3 | 100 | 79  | 22 | 50 | 32 | 50 | M16*2.0P  | 1-20mm     | 1      |
| SBT40-ER11-75  | 141.4 | 75  | 49  | 27 | 16 | 11 | 16 | M6*1.0P   | 1-7mm      |        |
| SBT40-ER11-100 | 166.4 | 100 | 74  | 27 | 16 | 11 | 16 | M6*1.0P   | 1-7mm      |        |
| SBT40-ER16-75  | 141.4 | 75  | 49  | 27 | 28 | 16 | 28 | M10*1.5P  | 1-10mm     | 1.3    |
| SBT40-ER16-100 | 166.4 | 100 | 74  | 27 | 28 | 16 | 28 | M10*1.5P  | 1-10mm     | 1.3    |
| SBT40-ER16-120 | 186.4 | 120 | 94  | 27 | 28 | 16 | 28 | M10*1.5P  | 1-10mm     | 1.42   |
| SBT40-ER16-150 | 216.4 | 150 | 124 | 27 | 28 | 16 | 28 | M10*1.5P  | 1-10mm     | 1.6    |
| SBT40-ER20-75  | 141.4 | 75  | 49  | 27 | 34 | 20 | 34 | M12*1.75P | 1-13mm     | 1.2    |
| SBT40-ER20-100 | 166.4 | 100 | 74  | 27 | 34 | 20 | 34 | M12*1.75P | 1-13mm     | 1.4    |
| SBT40-ER20-120 | 186.4 | 120 | 94  | 27 | 34 | 20 | 34 | M12*1.75P | 1-13mm     | 1.52   |
| SBT40-ER20-150 | 216.4 | 150 | 124 | 27 | 34 | 20 | 34 | M12*1.75P | 1-13mm     | 1.7    |
| SBT40-ER25-75  | 141.4 | 75  | 49  | 27 | 42 | 25 | 42 | M16*2.0P  | 1-16mm     | 1.3    |
| SBT40-ER25-100 | 166.4 | 100 | 74  | 27 | 42 | 25 | 42 | M16*2.0P  | 1-16mm     | 1.6    |
| SBT40-ER25-120 | 186.4 | 120 | 94  | 27 | 42 | 25 | 42 | M16*2.0P  | 1-16mm     | 1.78   |
| SBT40-ER25-150 | 216.4 | 150 | 124 | 27 | 42 | 25 | 42 | M16*2.0P  | 1-16mm     | 2.05   |
| SBT40-ER32-75  | 141.4 | 75  | 49  | 27 | 50 | 32 | 50 | M16*2.0P  | 1-20mm     | 1.47   |
| SBT40-ER32-100 | 166.4 | 100 | 74  | 27 | 50 | 32 | 50 | M16*2.0P  | 1-20mm     | 1.7    |
| SBT40-ER32-120 | 186.4 | 120 | 94  | 27 | 50 | 32 | 50 | M16*2.0P  | 1-20mm     | 1.98   |
| SBT40-ER32-150 | 216.4 | 150 | 124 | 27 | 50 | 32 | 50 | M16*2.0P  | 1-20mm     | 2.4    |
| SBT40-ER32-200 | 266.4 | 200 | 174 | 27 | 50 | 32 | 50 | M16*2.0P  | 1-20mm     | 3.15   |
| SBT40-ER40-80  | 146.4 | 80  | 54  | 27 | 63 | 40 | 63 | M20*2.0P  | 2-26mm     | 1.5    |
| SBT40-ER40-100 | 166.4 | 100 | 74  | 27 | 63 | 40 | 63 | M20*2.0P  | 2-26mm     | 2.1    |
| SBT40-ER40-120 | 186.4 | 120 | 94  | 27 | 63 | 40 | 63 | M20*2.0P  | 2-26mm     | 2.54   |
| SBT40-ER40-150 | 216.4 | 150 | 124 | 27 | 63 | 40 | 63 | M20*2.0P  | 2-26mm     | 3.2    |

# SBT50-ER 弹性筒夹刀柄

# SBT50-ER COLLET CHUCK



P.131



P.106



P.133



P.129

| 规格 / 型号 Model  | L     | L1  | L2    | L3 | d1 | d2 | d3 | T         | 夹持范围 Range | 重量 KGS |
|----------------|-------|-----|-------|----|----|----|----|-----------|------------|--------|
| SBT50-ER16-100 | 203.3 | 100 | 63.5  | 38 | 28 | 16 | 28 | M10*1.5P  | 1-10mm     | 3.9    |
| SBT50-ER16-135 | 238.3 | 135 | 98.5  | 38 | 28 | 16 | 28 | M10*1.5P  | 1-10mm     | 4.04   |
| SBT50-ER16-165 | 268.3 | 165 | 128.5 | 38 | 28 | 16 | 28 | M10*1.5P  | 1-10mm     | 4.16   |
| SBT50-ER16-200 | 303.3 | 200 | 163.5 | 38 | 28 | 16 | 28 | M10*1.5P  | 1-10mm     | 4.3    |
| SBT50-ER20-100 | 203.3 | 100 | 63.5  | 38 | 34 | 20 | 34 | M12*1.75P | 1-13mm     | 4      |
| SBT50-ER20-135 | 238.3 | 135 | 98.5  | 38 | 34 | 20 | 34 | M12*1.75P | 1-13mm     | 4.21   |
| SBT50-ER20-165 | 268.3 | 165 | 128.5 | 38 | 34 | 20 | 34 | M12*1.75P | 1-13mm     | 4.39   |
| SBT50-ER20-200 | 303.3 | 200 | 163.5 | 38 | 34 | 20 | 34 | M12*1.75P | 1-13mm     | 4.6    |
| SBT50-ER25-100 | 203.3 | 100 | 63.5  | 38 | 42 | 25 | 42 | M16*2.0P  | 1-16mm     | 4.1    |
| SBT50-ER25-135 | 238.3 | 135 | 98.5  | 38 | 42 | 25 | 42 | M16*2.0P  | 1-16mm     | 4.45   |
| SBT50-ER25-165 | 268.3 | 165 | 128.5 | 38 | 42 | 25 | 42 | M16*2.0P  | 1-16mm     | 4.75   |
| SBT50-ER25-200 | 303.3 | 200 | 163.5 | 38 | 42 | 25 | 42 | M16*2.0P  | 1-16mm     | 5.1    |
| SBT50-ER25-250 | 353.3 | 250 | 213.5 | 38 | 42 | 25 | 42 | M16*2.0P  | 1-16mm     | 5.8    |
| SBT50-ER25-300 | 403.3 | 300 | 263.5 | 38 | 42 | 25 | 42 | M16*2.0P  | 1-16mm     | 6.2    |
| SBT50-ER32-100 | 203.3 | 100 | 63.5  | 38 | 50 | 32 | 50 | M16*2.0P  | 1-20mm     | 4.2    |
| SBT50-ER32-135 | 238.3 | 135 | 98.5  | 38 | 50 | 32 | 50 | M16*2.0P  | 1-20mm     | 4.725  |
| SBT50-ER32-165 | 268.3 | 165 | 128.5 | 38 | 50 | 32 | 50 | M16*2.0P  | 1-20mm     | 5.175  |
| SBT50-ER32-200 | 303.3 | 200 | 163.5 | 38 | 50 | 32 | 50 | M16*2.0P  | 1-20mm     | 5.7    |
| SBT50-ER32-250 | 353.3 | 250 | 213.5 | 38 | 50 | 32 | 50 | M16*2.0P  | 1-20mm     | 6.3    |
| SBT50-ER32-300 | 403.3 | 300 | 263.5 | 38 | 50 | 32 | 50 | M16*2.0P  | 1-20mm     | 7.2    |
| SBT50-ER40-100 | 203.3 | 100 | 63.5  | 38 | 63 | 40 | 63 | M20*2.0P  | 2-26mm     | 4.5    |
| SBT50-ER40-135 | 238.3 | 135 | 98.5  | 38 | 63 | 40 | 63 | M20*2.0P  | 2-26mm     | 5.27   |
| SBT50-ER40-165 | 268.3 | 165 | 128.5 | 38 | 63 | 40 | 63 | M20*2.0P  | 2-26mm     | 5.93   |
| SBT50-ER40-200 | 303.3 | 200 | 163.5 | 38 | 63 | 40 | 63 | M20*2.0P  | 2-26mm     | 6.7    |
| SBT50-ER40-250 | 353.3 | 250 | 213.5 | 38 | 63 | 40 | 63 | M20*2.0P  | 2-26mm     | 7.8    |
| SBT50-ER40-300 | 403.3 | 300 | 263.5 | 38 | 63 | 40 | 63 | M20*2.0P  | 2-26mm     | 9      |
| SBT50-ER50-100 | 203.3 | 100 | 63.5  | 38 | 78 | 50 | 78 | M24*2.0P  | 5-34mm     | 3.9    |
| SBT50-ER50-150 | 253.3 | 150 | 113.5 | 38 | 78 | 50 | 78 | M24*2.0P  | 5-34mm     | 6.2    |

CNC TOOLS  
数控刀柄

## SBT30-FMH 端面出水铣刀柄

## SBT30-FMH FACE MILL HOLDER-COOLANT TYPE



FIG. 1

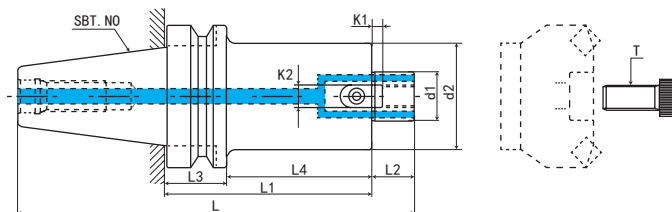
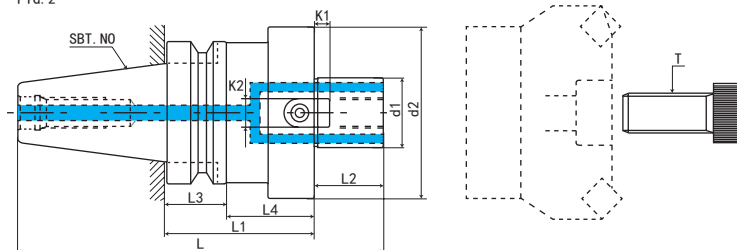


FIG. 2



| 规格 Model              | L     | L1 | L2 | L3 | L4 | d1    | d2 | K1   | K2   | T         | FIG | 重量 KGS |
|-----------------------|-------|----|----|----|----|-------|----|------|------|-----------|-----|--------|
| SBT30-FMH16-45-D37    | 111.3 | 45 | 17 | 22 | 24 | 16    | 37 | 3.2  | 8    | M8*1.25P  | 1   |        |
| SBT30-FMH16-60-D37    | 126.3 | 60 | 17 | 22 | 39 | 16    | 37 | 3.2  | 8    | M8*1.25P  | 1   | 0.5    |
| SBT30-FMH22-45-D47    | 112.3 | 45 | 18 | 22 | 24 | 22    | 47 | 4.8  | 10   | M10*1.5P  | 2   | 0.75   |
| SBT30-FMH22-60-D47    | 127.3 | 60 | 18 | 22 | 39 | 22    | 47 | 4.8  | 10   | M10*1.5P  | 2   | 1.5    |
| SBT30-FMH27-45-D60    | 114.3 | 45 | 20 | 22 | 24 | 27    | 60 | 5.8  | 12   | M12*1.75P | 2   | 1.45   |
| SBT30-FMH27-60-D60    | 129.3 | 60 | 20 | 22 | 39 | 27    | 60 | 5.8  | 12   | M12*1.75P | 2   | 1.45   |
| SBT30-FMH32-45-D68    | 116.3 | 45 | 22 | 22 | 24 | 32    | 68 | 6.8  | 14   | M16*2.0P  | 2   | 1.5    |
| SBT30-FMH32-60-D68    | 131.3 | 60 | 22 | 22 | 39 | 32    | 68 | 6.8  | 14   | M16*2.0P  | 2   | 1.5    |
| SBT30-FMH25.4-45-D60  | 114.3 | 45 | 20 | 22 | 24 | 25.4  | 60 | 4.52 | 9.52 | M12*1.75P | 2   | 1.1    |
| SBT30-FMH25.4-60-D60  | 129.3 | 60 | 20 | 22 | 39 | 25.4  | 60 | 4.52 | 9.52 | M12*1.75P | 2   | 1.3    |
| SBT30-FMH31.75-45-D68 | 116.3 | 45 | 22 | 22 | 24 | 31.75 | 68 | 6.7  | 12.7 | M16*2.0P  | 2   | 1.35   |
| SBT30-FMH31.75-60-D68 | 131.3 | 60 | 22 | 22 | 39 | 31.75 | 68 | 6.7  | 12.7 | M16*2.0P  | 2   | 1.5    |

数控刀柄  
CNC TOOLS



# SBT40-FMH 端面出水铣刀柄

## SBT40-FMH FACE MILL HOLDER-COOLANT TYPE



FIG. 1

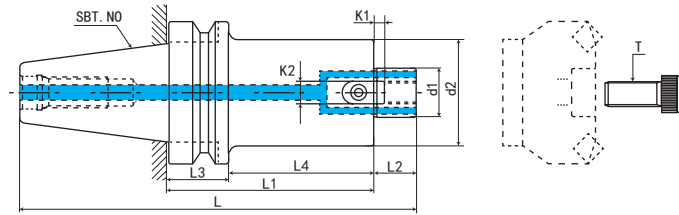
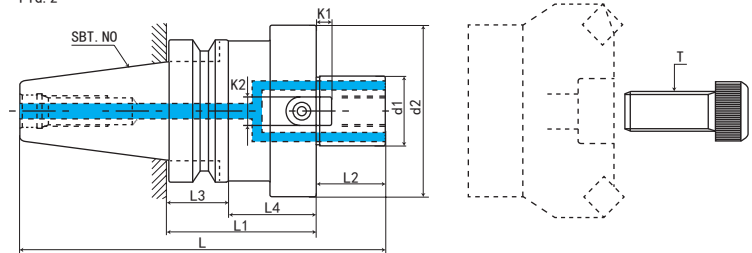


FIG. 2



P. I29

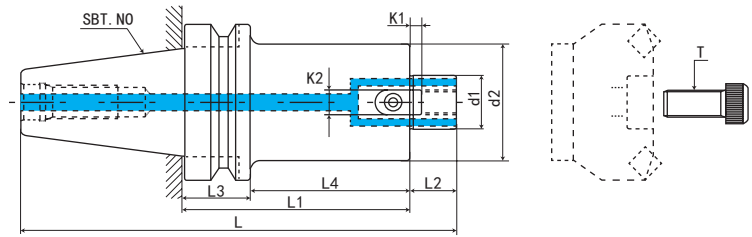


P. L12

| 规格 Model               | L      | L1  | L2 | L3 | L4  | d1    | d2 | K1   | K2    | T         | FIG | 重量 KGS |
|------------------------|--------|-----|----|----|-----|-------|----|------|-------|-----------|-----|--------|
| SBT40-FMH16-60-D37     | 143.4  | 60  | 17 | 27 | 34  | 16    | 37 | 3.2  | 8     | M8*1.25P  | 1   | 1.3    |
| SBT40-FMH16-100-D37    | 183.4  | 100 | 17 | 27 | 74  | 16    | 37 | 3.2  | 8     | M8*1.25P  | 1   | 1.4    |
| SBT40-FMH22-45-D47     | 129.4  | 45  | 18 | 27 | 19  | 22    | 47 | 4.8  | 10    | M10*1.5P  | 1   | 1.29   |
| SBT40-FMH22-60-D47     | 144.4  | 60  | 18 | 27 | 34  | 22    | 47 | 4.8  | 10    | M10*1.5P  | 1   | 1.5    |
| SBT40-FMH22-100-D47    | 184.4  | 100 | 18 | 27 | 74  | 22    | 47 | 4.8  | 10    | M10*1.5P  | 1   | 2.05   |
| SBT40-FMH22-150-D47    | 234.4  | 150 | 18 | 27 | 124 | 22    | 47 | 4.8  | 10    | M10*1.5P  | 1   | 2.75   |
| SBT40-FMH22-200-D47    | 284.4  | 200 | 18 | 27 | 174 | 22    | 47 | 4.8  | 10    | M10*1.5P  | 1   | 3.6    |
| SBT40-FMH22-250-D47    | 334.4  | 250 | 18 | 27 | 224 | 22    | 47 | 4.8  | 10    | M10*1.5P  | 1   | 4.25   |
| SBT40-FMH27-45-D60     | 131.4  | 45  | 20 | 27 | 19  | 27    | 60 | 5.8  | 12    | M12*1.75P | 1   | 2.23   |
| SBT40-FMH27-60-D60     | 146.4  | 60  | 20 | 27 | 34  | 27    | 60 | 5.8  | 12    | M12*1.75P | 1   | 2.35   |
| SBT40-FMH27-100-D60    | 186.4  | 100 | 20 | 27 | 74  | 27    | 60 | 5.8  | 12    | M12*1.75P | 1   | 3.1    |
| SBT40-FMH27-150-D60    | 236.4  | 150 | 20 | 27 | 124 | 27    | 60 | 5.8  | 12    | M12*1.75P | 1   | 3.9    |
| SBT40-FMH27-200-D60    | 286.4  | 200 | 20 | 27 | 174 | 27    | 60 | 5.8  | 12    | M12*1.75P | 1   | 4.8    |
| SBT40-FMH32-45-D68     | 133.4  | 45  | 22 | 27 | 19  | 32    | 68 | 6.8  | 14    | M16*2.0P  | 2   | 1.78   |
| SBT40-FMH32-60-D68     | 148.4  | 60  | 22 | 27 | 34  | 32    | 68 | 6.8  | 14    | M16*2.0P  | 2   | 1.9    |
| SBT40-FMH32-100-D68    | 188.4  | 100 | 22 | 27 | 74  | 32    | 68 | 6.8  | 14    | M16*2.0P  | 2   | 2.8    |
| SBT40-FMH32-150-D68    | 238.4  | 150 | 22 | 27 | 124 | 32    | 68 | 6.8  | 14    | M16*2.0P  | 2   | 3.6    |
| SBT40-FMH40-45-D78     | 136.41 | 45  | 25 | 27 | 19  | 40    | 78 | 8.3  | 16    | M16*2.0P  | 2   | 2.605  |
| SBT40-FMH40-60-D78     | 151.4  | 60  | 25 | 27 | 34  | 40    | 78 | 8.3  | 16    | M16*2.0P  | 2   | 2.8    |
| SBT40-FMH40-100-D78    | 191.4  | 100 | 25 | 27 | 74  | 40    | 78 | 8.3  | 16    | M16*2.0P  | 2   | 3.6    |
| SBT40-FMH40-150-D78    | 241.4  | 150 | 25 | 27 | 124 | 40    | 78 | 8.3  | 16    | M16*2.0P  | 2   | 4.9    |
| SBT40-FMH25.4-45-D60   | 131.4  | 45  | 20 | 27 | 19  | 25.4  | 60 | 4.52 | 9.52  | M12*1.75P | 1   | 1.395  |
| SBT40-FMH25.4-60-D60   | 146.4  | 60  | 20 | 27 | 34  | 25.4  | 60 | 4.52 | 9.52  | M12*1.75P | 1   | 1.5    |
| SBT40-FMH25.4-100-D60  | 186.4  | 100 | 20 | 27 | 74  | 25.4  | 60 | 4.52 | 9.52  | M12*1.75P | 1   | 2.05   |
| SBT40-FMH25.4-150-D60  | 236.4  | 150 | 20 | 27 | 124 | 25.4  | 60 | 4.52 | 9.52  | M12*1.75P | 1   | 2.75   |
| SBT40-FMH25.4-200-D60  | 286.4  | 200 | 20 | 27 | 174 | 25.4  | 60 | 4.52 | 9.52  | M12*1.75P | 1   | 3.6    |
| SBT40-FMH31.75-45-D68  | 133.4  | 45  | 22 | 27 | 19  | 31.75 | 68 | 6.7  | 12.7  | M16*2.0P  | 2   | 1.87   |
| SBT40-FMH31.75-60-D68  | 148.4  | 60  | 22 | 27 | 34  | 31.75 | 68 | 6.7  | 12.7  | M16*2.0P  | 2   | 2.05   |
| SBT40-FMH31.75-100-D68 | 188.4  | 100 | 22 | 27 | 74  | 31.75 | 68 | 6.7  | 12.7  | M16*2.0P  | 2   | 2.9    |
| SBT40-FMH31.75-150-D68 | 238.4  | 150 | 22 | 27 | 124 | 31.75 | 68 | 6.7  | 12.7  | M16*2.0P  | 2   | 4.1    |
| SBT40-FMH38.1-45-D78   | 136.4  | 45  | 25 | 27 | 19  | 38.1  | 78 | 8.87 | 15.87 | M16*2.0P  | 2   | 1.78   |
| SBT40-FMH38.1-60-D78   | 151.4  | 60  | 25 | 27 | 34  | 38.1  | 78 | 8.87 | 15.87 | M16*2.0P  | 2   | 2.1    |
| SBT40-FMH38.1-100-D78  | 191.4  | 100 | 25 | 27 | 74  | 38.1  | 78 | 8.87 | 15.87 | M16*2.0P  | 2   | 2.95   |
| SBT40-FMH38.1-150-D78  | 241.4  | 150 | 25 | 27 | 124 | 38.1  | 78 | 8.87 | 15.87 | M16*2.0P  | 2   | 4.02   |

## SBT50-FMH 端面出水铣刀柄

## SBT50-FMH FACE MILL HOLDER-COOLANT TYPE



P. I29



P. L12

| 规格 Model            | L     | L1  | L2 | L3 | L4    | d1 | d2 | K1  | K2 | T         | 重量 KGS |
|---------------------|-------|-----|----|----|-------|----|----|-----|----|-----------|--------|
| SBT50-FMH16- 60-D37 | 180.3 | 60  | 17 | 38 | 23.5  | 16 | 37 | 3.2 | 8  | M8*1.25P  | 4      |
| SBT50-FMH16-100-D37 | 220.3 | 100 | 17 | 38 | 63.5  | 16 | 37 | 3.2 | 8  | M8*1.25P  | 4.2    |
| SBT50-FMH16-150-D37 | 270.3 | 150 | 17 | 38 | 113.5 | 16 | 37 | 3.2 | 8  | M8*1.25P  | 4.5    |
| SBT50-FMH16-200-D37 | 320.3 | 200 | 17 | 38 | 163.5 | 16 | 37 | 3.2 | 8  | M8*1.25P  | 4.8    |
| SBT50-FMH22- 60-D47 | 181.3 | 60  | 18 | 38 | 23.5  | 22 | 47 | 4.8 | 10 | M10*1.5P  | 4.6    |
| SBT50-FMH22-100-D47 | 221.3 | 100 | 18 | 38 | 63.5  | 22 | 47 | 4.8 | 10 | M10*1.5P  | 4.55   |
| SBT50-FMH22-150-D47 | 271.3 | 150 | 18 | 38 | 113.5 | 22 | 47 | 4.8 | 10 | M10*1.5P  | 5.25   |
| SBT50-FMH22-200-D47 | 321.3 | 200 | 18 | 38 | 163.5 | 22 | 47 | 4.8 | 10 | M10*1.5P  | 6      |
| SBT50-FMH22-250-D47 | 371.3 | 250 | 18 | 38 | 213.5 | 22 | 47 | 4.8 | 10 | M10*1.5P  | 7      |
| SBT50-FMH22-300-D47 | 421.3 | 300 | 18 | 38 | 263.5 | 22 | 47 | 4.8 | 10 | M10*1.5P  | 7.7    |
| SBT50-FMH22-350-D47 | 471.3 | 350 | 18 | 38 | 313.5 | 22 | 47 | 4.8 | 10 | M10*1.5P  | 8.4    |
| SBT50-FMH22-400-D47 | 521.3 | 400 | 18 | 38 | 363.5 | 22 | 47 | 4.8 | 10 | M10*1.5P  | 9.2    |
| SBT50-FMH22-450-D47 | 571.3 | 450 | 18 | 38 | 413.5 | 22 | 47 | 4.8 | 10 | M10*1.5P  | 10     |
| SBT50-FMH22-500-D47 | 621.3 | 500 | 18 | 38 | 463.5 | 22 | 47 | 4.8 | 10 | M10*1.5P  | 11.2   |
| SBT50-FMH22- 60-D60 | 181.3 | 60  | 18 | 38 | 23.5  | 22 | 60 | 4.8 | 10 | M10*1.5P  | 4.4    |
| SBT50-FMH22-100-D60 | 221.3 | 100 | 18 | 38 | 63.5  | 22 | 60 | 4.8 | 10 | M10*1.5P  | 5.2    |
| SBT50-FMH22-150-D60 | 271.3 | 150 | 18 | 38 | 113.5 | 22 | 60 | 4.8 | 10 | M10*1.5P  | 6.3    |
| SBT50-FMH22-200-D60 | 321.3 | 200 | 18 | 38 | 163.5 | 22 | 60 | 4.8 | 10 | M10*1.5P  | 7.2    |
| SBT50-FMH22-250-D60 | 371.3 | 250 | 18 | 38 | 213.5 | 22 | 60 | 4.8 | 10 | M10*1.5P  | 8.3    |
| SBT50-FMH22-300-D60 | 421.3 | 300 | 18 | 38 | 263.5 | 22 | 60 | 4.8 | 10 | M10*1.5P  |        |
| SBT50-FMH22-350-D60 | 471.3 | 350 | 18 | 38 | 313.5 | 22 | 60 | 4.8 | 10 | M10*1.5P  |        |
| SBT50-FMH22-400-D60 | 521.3 | 400 | 18 | 38 | 363.5 | 22 | 60 | 4.8 | 10 | M10*1.5P  |        |
| SBT50-FMH22-450-D60 | 571.3 | 450 | 18 | 38 | 413.5 | 22 | 60 | 4.8 | 10 | M10*1.5P  |        |
| SBT50-FMH22-500-D60 | 621.3 | 500 | 18 | 38 | 463.5 | 22 | 60 | 4.8 | 10 | M10*1.5P  |        |
| SBT50-FMH27- 45-D60 | 168.3 | 45  | 20 | 38 | 8.5   | 27 | 60 | 5.8 | 12 | M12*1.75P |        |
| SBT50-FMH27- 60-D60 | 183.3 | 60  | 20 | 38 | 23.5  | 27 | 60 | 5.8 | 12 | M12*1.75P | 4.5    |
| SBT50-FMH27-100-D60 | 223.3 | 100 | 20 | 38 | 63.5  | 27 | 60 | 5.8 | 12 | M12*1.75P | 5.3    |
| SBT50-FMH27-150-D60 | 273.3 | 150 | 20 | 38 | 113.5 | 27 | 60 | 5.8 | 12 | M12*1.75P | 6.2    |
| SBT50-FMH27-200-D60 | 323.3 | 200 | 20 | 38 | 163.5 | 27 | 60 | 5.8 | 12 | M12*1.75P | 7.2    |
| SBT50-FMH27-250-D60 | 373.3 | 250 | 20 | 38 | 213.5 | 27 | 60 | 5.8 | 12 | M12*1.75P | 8.4    |
| SBT50-FMH27-300-D60 | 423.3 | 300 | 20 | 38 | 263.5 | 27 | 60 | 5.8 | 12 | M12*1.75P |        |
| SBT50-FMH27-350-D60 | 473.3 | 350 | 20 | 38 | 313.5 | 27 | 60 | 5.8 | 12 | M12*1.75P |        |
| SBT50-FMH27-400-D60 | 523.3 | 400 | 20 | 38 | 363.5 | 27 | 60 | 5.8 | 12 | M12*1.75P |        |
| SBT50-FMH27-450-D60 | 573.3 | 450 | 20 | 38 | 413.5 | 27 | 60 | 5.8 | 12 | M12*1.75P |        |
| SBT50-FMH27-500-D60 | 623.3 | 500 | 20 | 38 | 463.5 | 27 | 60 | 5.8 | 12 | M12*1.75P |        |

# SBT50-FMH 端面出水铣刀柄

## SBT50-FMH FACE MILL HOLDER-COOLANT TYPE



P.I29

P.L12

FIG. 1

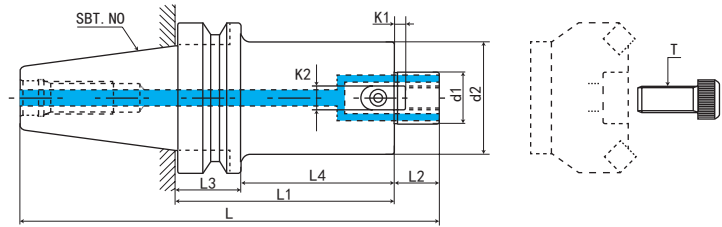
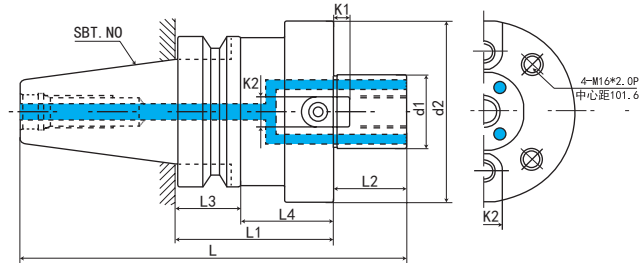


FIG. 2



| 规格 Model             | L     | L1  | L2 | L3 | L4    | d1 | d2  | K1   | K2   | T         | FIG | 重量 KGS |
|----------------------|-------|-----|----|----|-------|----|-----|------|------|-----------|-----|--------|
| SBT50-FMH27-45-D76   | 168.3 | 45  | 20 | 38 | 8.5   | 27 | 76  | 5.8  | 12   | M12*1.75P | 1   |        |
| SBT50-FMH27-60-D76   | 183.3 | 60  | 20 | 38 | 23.5  | 27 | 76  | 5.8  | 12   | M12*1.75P | 1   |        |
| SBT50-FMH27-100-D76  | 223.3 | 100 | 20 | 38 | 63.5  | 27 | 76  | 5.8  | 12   | M12*1.75P | 1   |        |
| SBT50-FMH27-150-D76  | 273.3 | 150 | 20 | 38 | 113.5 | 27 | 76  | 5.8  | 12   | M12*1.75P | 1   |        |
| SBT50-FMH27-200-D76  | 323.3 | 200 | 20 | 38 | 163.5 | 27 | 76  | 5.8  | 12   | M12*1.75P | 1   |        |
| SBT50-FMH27-250-D76  | 373.3 | 250 | 20 | 38 | 213.5 | 27 | 76  | 5.8  | 12   | M12*1.75P | 1   |        |
| SBT50-FMH27-300-D76  | 423.3 | 300 | 20 | 38 | 263.5 | 27 | 76  | 5.8  | 12   | M12*1.75P | 1   |        |
| SBT50-FMH27-350-D76  | 473.3 | 350 | 20 | 38 | 313.5 | 27 | 76  | 5.8  | 12   | M12*1.75P | 1   |        |
| SBT50-FMH27-400-D76  | 523.3 | 400 | 20 | 38 | 363.5 | 27 | 76  | 5.8  | 12   | M12*1.75P | 1   |        |
| SBT50-FMH27-450-D76  | 573.3 | 450 | 20 | 38 | 413.5 | 27 | 76  | 5.8  | 12   | M12*1.75P | 1   |        |
| SBT50-FMH27-500-D76  | 623.3 | 500 | 20 | 38 | 463.5 | 27 | 76  | 5.8  | 12   | M12*1.75P | 1   |        |
| SBT50-FMH32-45-D96   | 170.3 | 45  | 22 | 38 | 8.5   | 32 | 96  | 6.8  | 14   | M16*2.0P  | 1   |        |
| SBT50-FMH32-60-D96   | 185.3 | 60  | 22 | 38 | 23.5  | 32 | 96  | 6.8  | 14   | M16*2.0P  | 1   | 5.3    |
| SBT50-FMH32-100-D96  | 225.3 | 100 | 22 | 38 | 63.5  | 32 | 96  | 6.8  | 14   | M16*2.0P  | 1   | 7.5    |
| SBT50-FMH32-150-D96  | 275.3 | 150 | 22 | 38 | 113.5 | 32 | 96  | 6.8  | 14   | M16*2.0P  | 1   | 10.1   |
| SBT50-FMH32-200-D96  | 325.3 | 200 | 22 | 38 | 163.5 | 32 | 96  | 6.8  | 14   | M16*2.0P  | 1   | 13     |
| SBT50-FMH32-250-D96  | 375.3 | 250 | 22 | 38 | 213.5 | 32 | 96  | 6.8  | 14   | M16*2.0P  | 1   |        |
| SBT50-FMH32-300-D96  | 425.3 | 300 | 22 | 38 | 263.5 | 32 | 96  | 6.8  | 14   | M16*2.0P  | 1   |        |
| SBT50-FMH32-350-D96  | 475.3 | 350 | 22 | 38 | 313.5 | 32 | 96  | 6.8  | 14   | M16*2.0P  | 1   |        |
| SBT50-FMH40-45-D100  | 173.3 | 45  | 25 | 38 | 8.5   | 40 | 100 | 8.3  | 16   | M16*2.0P  | 1   |        |
| SBT50-FMH40-60-D100  | 188.3 | 60  | 25 | 38 | 23.5  | 40 | 100 | 8.3  | 16   | M16*2.0P  | 1   | 5.7    |
| SBT50-FMH40-100-D100 | 228.3 | 100 | 25 | 38 | 63.5  | 40 | 100 | 8.3  | 16   | M16*2.0P  | 1   | 8.2    |
| SBT50-FMH40-150-D100 | 278.3 | 150 | 25 | 38 | 113.5 | 40 | 100 | 8.3  | 16   | M16*2.0P  | 1   | 10.8   |
| SBT50-FMH40-200-D100 | 328.3 | 200 | 25 | 38 | 163.5 | 40 | 100 | 8.3  | 16   | M16*2.0P  | 1   | 13.9   |
| SBT50-FMH40-250-D100 | 378.3 | 250 | 25 | 38 | 213.5 | 40 | 100 | 8.3  | 16   | M16*2.0P  | 1   |        |
| SBT50-FMH40-300-D100 | 428.3 | 300 | 25 | 38 | 263.5 | 40 | 100 | 8.3  | 16   | M16*2.0P  | 1   |        |
| SBT50-FMH60-75-D128  | 203.3 | 75  | 25 | 38 | 38.5  | 60 | 128 | 12.5 | 25.4 | M16*2.0P  | 2   |        |
| SBT50-FMH60-100-D128 | 228.3 | 100 | 25 | 38 | 63.5  | 60 | 128 | 12.5 | 25.4 | M16*2.0P  | 2   |        |
| SBT50-FMH60-150-D128 | 278.3 | 150 | 25 | 38 | 113.5 | 60 | 128 | 12.5 | 25.4 | M16*2.0P  | 2   |        |



## SBT50-FMH 端面出水铣刀柄

## SBT50-FMH FACE MILL HOLDER-COOLANT TYPE



P.I29



P.L12

FIG. 1

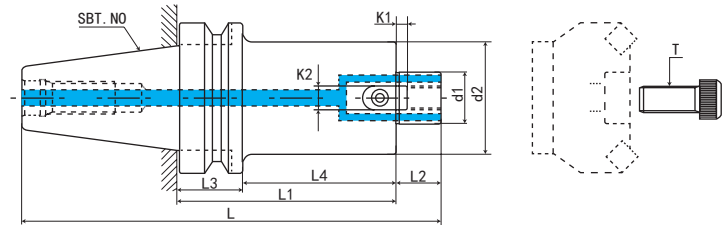
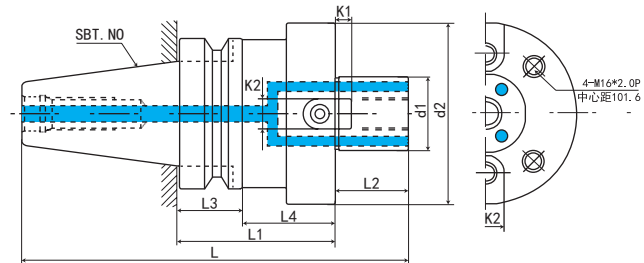


FIG. 2



| 规格 Model                 | L     | L1  | L2 | L3 | L4    | d1     | d2  | K1   | K2    | T         | FIG | 重量 KGS |
|--------------------------|-------|-----|----|----|-------|--------|-----|------|-------|-----------|-----|--------|
| SBT50-FMH25.4-45-D60     | 168.3 | 45  | 20 | 38 | 8.5   | 25.4   | 60  | 4.52 | 9.52  | M12*1.75P | 1   |        |
| SBT50-FMH25.4-60-D60     | 183.3 | 60  | 20 | 38 | 23.5  | 25.4   | 60  | 4.52 | 9.52  | M12*1.75P | 1   | 4.5    |
| SBT50-FMH25.4-100-D60    | 223.3 | 100 | 20 | 38 | 63.5  | 25.4   | 60  | 4.52 | 9.52  | M12*1.75P | 1   | 5.3    |
| SBT50-FMH25.4-150-D60    | 273.3 | 150 | 20 | 38 | 113.5 | 25.4   | 60  | 4.52 | 9.52  | M12*1.75P | 1   | 6.4    |
| SBT50-FMH25.4-200-D60    | 323.3 | 200 | 20 | 38 | 163.5 | 25.4   | 60  | 4.52 | 9.52  | M12*1.75P | 1   | 7.4    |
| SBT50-FMH25.4-250-D60    | 373.3 | 250 | 20 | 38 | 213.5 | 25.4   | 60  | 4.52 | 9.52  | M12*1.75P | 1   |        |
| SBT50-FMH25.4-300-D60    | 423.3 | 300 | 20 | 38 | 263.5 | 25.4   | 60  | 4.52 | 9.52  | M12*1.75P | 1   |        |
| SBT50-FMH25.4-45-D76     | 168.3 | 45  | 20 | 38 | 8.5   | 25.4   | 76  | 4.52 | 9.52  | M12*1.75P | 1   |        |
| SBT50-FMH25.4-60-D76     | 183.3 | 60  | 20 | 38 | 23.5  | 25.4   | 76  | 4.52 | 9.52  | M12*1.75P | 1   |        |
| SBT50-FMH25.4-100-D76    | 223.3 | 100 | 20 | 38 | 63.5  | 25.4   | 76  | 4.52 | 9.52  | M12*1.75P | 1   |        |
| SBT50-FMH25.4-150-D76    | 273.3 | 150 | 20 | 38 | 113.5 | 25.4   | 76  | 4.52 | 9.52  | M12*1.75P | 1   |        |
| SBT50-FMH25.4-200-D76    | 323.3 | 200 | 20 | 38 | 163.5 | 25.4   | 76  | 4.52 | 9.52  | M12*1.75P | 1   |        |
| SBT50-FMH25.4-250-D76    | 373.3 | 250 | 20 | 38 | 213.5 | 25.4   | 76  | 4.52 | 9.52  | M12*1.75P | 1   |        |
| SBT50-FMH25.4-300-D76    | 423.3 | 300 | 20 | 38 | 263.5 | 25.4   | 76  | 4.52 | 9.52  | M12*1.75P | 1   |        |
| SBT50-FMH31.75-45-D96    | 170.3 | 45  | 22 | 38 | 8.5   | 31.75  | 96  | 6.7  | 12.7  | M16*2.0P  | 1   |        |
| SBT50-FMH31.75-60-D96    | 185.3 | 60  | 22 | 38 | 23.5  | 31.75  | 96  | 6.7  | 12.7  | M16*2.0P  | 1   | 5.3    |
| SBT50-FMH31.75-100-D96   | 225.3 | 100 | 22 | 38 | 63.5  | 31.75  | 96  | 6.7  | 12.7  | M16*2.0P  | 1   | 7.5    |
| SBT50-FMH31.75-150-D96   | 275.3 | 150 | 22 | 38 | 113.5 | 31.75  | 96  | 6.7  | 12.7  | M16*2.0P  | 1   | 10.3   |
| SBT50-FMH31.75-200-D96   | 325.3 | 200 | 22 | 38 | 163.5 | 31.75  | 96  | 6.7  | 12.7  | M16*2.0P  | 1   | 13     |
| SBT50-FMH31.75-250-D96   | 375.3 | 250 | 22 | 38 | 213.5 | 31.75  | 96  | 6.7  | 12.7  | M16*2.0P  | 1   |        |
| SBT50-FMH31.75-300-D96   | 425.3 | 300 | 22 | 38 | 263.5 | 31.75  | 96  | 6.7  | 12.7  | M16*2.0P  | 1   |        |
| SBT50-FMH38.1-45-D100    | 173.3 | 45  | 25 | 38 | 8.5   | 38.1   | 100 | 8.87 | 15.87 | M16*2.0P  | 1   |        |
| SBT50-FMH38.1-60-D100    | 188.3 | 60  | 25 | 38 | 23.5  | 38.1   | 100 | 8.87 | 15.87 | M16*2.0P  | 1   | 5.6    |
| SBT50-FMH38.1-100-D100   | 228.3 | 100 | 25 | 38 | 63.5  | 38.1   | 100 | 8.87 | 15.87 | M16*2.0P  | 1   | 8      |
| SBT50-FMH38.1-150-D100   | 278.3 | 150 | 25 | 38 | 113.5 | 38.1   | 100 | 8.87 | 15.87 | M16*2.0P  | 1   |        |
| SBT50-FMH38.1-200-D100   | 328.3 | 200 | 25 | 38 | 163.5 | 38.1   | 100 | 8.87 | 15.87 | M16*2.0P  | 1   |        |
| SBT50-FMH38.1-250-D100   | 378.3 | 250 | 25 | 38 | 213.5 | 38.1   | 100 | 8.87 | 15.87 | M16*2.0P  | 1   |        |
| SBT50-FMH38.1-300-D100   | 428.3 | 300 | 25 | 38 | 263.5 | 38.1   | 100 | 8.87 | 15.87 | M16*2.0P  | 1   |        |
| SBT50-FMH47.625-75-D128  | 203.3 | 75  | 25 | 38 | 38.5  | 47.625 | 128 | 12.5 | 25.4  | M16*2.0P  | 2   | 7.9    |
| SBT50-FMH47.625-100-D128 | 228.3 | 100 | 25 | 38 | 63.5  | 47.625 | 128 | 12.5 | 25.4  | M16*2.0P  | 2   |        |
| SBT50-FMH47.625-150-D128 | 278.3 | 150 | 25 | 38 | 113.5 | 47.625 | 128 | 12.5 | 25.4  | M16*2.0P  | 2   |        |

数控刀柄  
CNC TOOLS

# SBT-SLN 侧固式刀柄

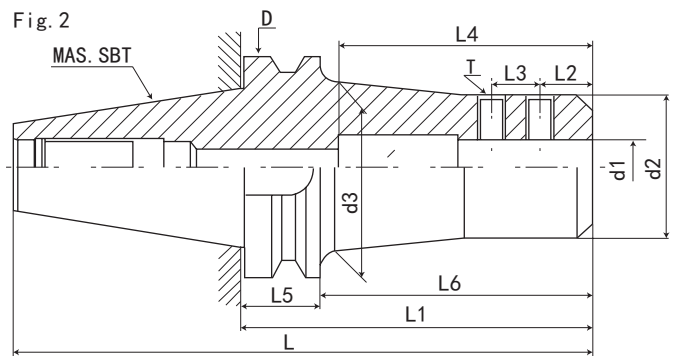
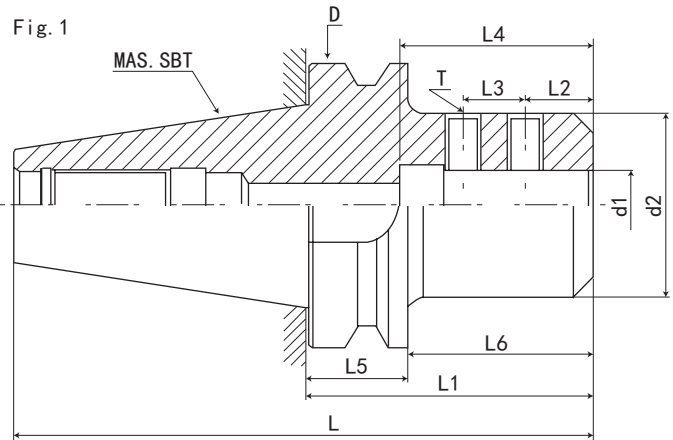
## SBT-SLN SIDE LOCK END MILL HOLDER



P.129



P.003



| 规格 Model        | L     | L1  | L2 | L3 | L4  | L5 | L6  | d1 | d2 | d3 | FIG | T         | 重量 KGS |
|-----------------|-------|-----|----|----|-----|----|-----|----|----|----|-----|-----------|--------|
| SBT30-SLN16-75  | 124.3 | 75  | 14 | 14 | 48  | 22 | 54  | 16 | 48 | -  | 1   | M10*1.5P  | 1.03   |
| SBT30-SLN20-75  | 124.3 | 75  | 14 | 14 | 50  | 22 | 54  | 20 | 48 | -  | 1   | M10*1.5P  | 0.98   |
| SBT30-SLN25-80  | 129.3 | 80  | 15 | 20 | 56  | 22 | 59  | 25 | 48 | -  | 1   | M16*2.0P  | 0.97   |
| SBT30-SLN32-85  | 134.3 | 85  | 15 | 20 | 60  | 22 | 59  | 32 | 63 | -  | 1   | M16*2.0P  | 1.38   |
| SBT40-SLN16-100 | 166.4 | 100 | 22 | 18 | 100 | 27 | 74  | 16 | 48 | -  | 1   | M10*1.5P  | 2      |
| SBT40-SLN16-150 | 216.4 | 150 | 22 | 18 | 100 | 27 | 124 | 16 | 40 | 45 | 2   | M10*1.5P  | 2.2    |
| SBT40-SLN16-200 | 266.4 | 200 | 22 | 18 | 100 | 27 | 174 | 16 | 40 | 45 | 2   | M10*1.5P  |        |
| SBT40-SLN20-100 | 166.4 | 100 | 25 | 20 | 110 | 27 | 74  | 20 | 52 | -  | 1   | M12*1.75P | 2      |
| SBT40-SLN20-150 | 216.4 | 150 | 25 | 20 | 110 | 27 | 124 | 20 | 45 | 50 | 2   | M12*1.75P | 2.5    |
| SBT40-SLN20-200 | 266.4 | 200 | 25 | 20 | 110 | 27 | 174 | 20 | 45 | 50 | 2   | M12*1.75P |        |
| SBT40-SLN25-100 | 166.4 | 100 | 24 | 25 | 120 | 27 | 74  | 25 | 65 | -  | 1   | M12*1.75P | 2.5    |
| SBT40-SLN25-150 | 216.4 | 150 | 24 | 25 | 120 | 27 | 124 | 25 | 50 | 55 | 2   | M12*1.75P | 2.6    |
| SBT40-SLN25-200 | 266.4 | 200 | 24 | 25 | 120 | 27 | 174 | 25 | 50 | 55 | 2   | M12*1.75P |        |
| SBT40-SLN32-100 | 166.4 | 100 | 24 | 28 | 120 | 27 | 74  | 32 | 65 | -  | 1   | M16*2.0P  | 2.4    |
| SBT40-SLN32-150 | 216.4 | 150 | 24 | 28 | 120 | 27 | 124 | 32 | 58 | 63 | 2   | M16*2.0P  | 2.9    |
| SBT40-SLN32-200 | 266.4 | 200 | 24 | 28 | 120 | 27 | 174 | 32 | 58 | 63 | 2   | M16*2.0P  |        |
| SBT40-SLN40-105 | 171.4 | 105 | 30 | 32 | 120 | 27 | 79  | 40 | 73 | -  | 1   | M16*2.0P  | 2.8    |
| SBT40-SLN40-150 | 216.4 | 150 | 30 | 32 | 120 | 27 | 124 | 40 | 73 | -  | 1   | M16*2.0P  | 3.8    |
| SBT40-SLN40-200 | 266.4 | 200 | 30 | 32 | 120 | 27 | 174 | 40 | 73 | -  | 1   | M16*2.0P  |        |

CNC TOOLS  
数控刀柄



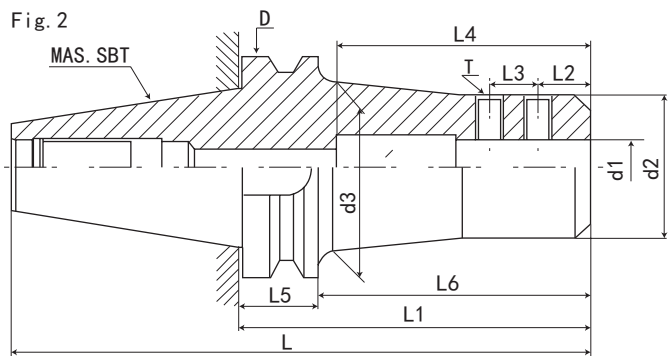
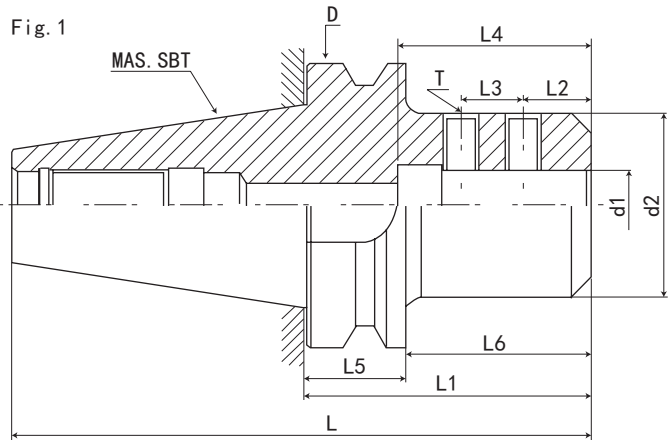
## SBT50-SLN 侧固式刀柄

## SBT50-SLN SIDE LOCK END MILL HOLDER



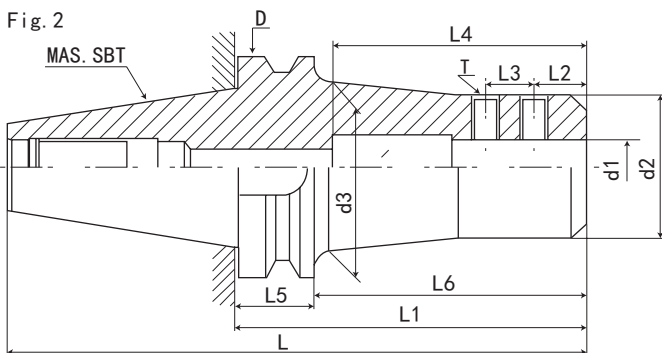
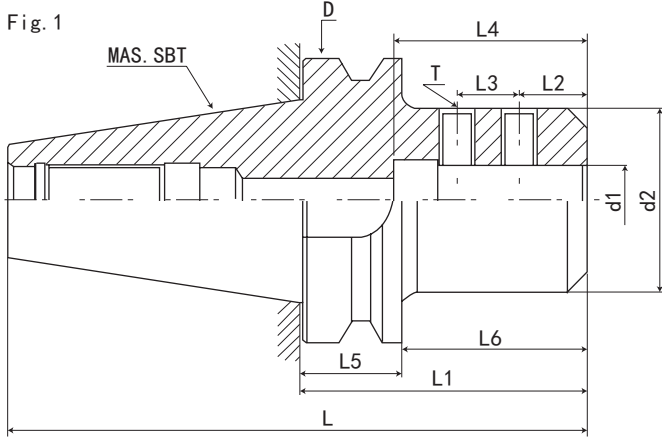
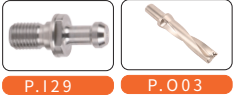
P.129

P.003



| 规格 Model        | L     | L1  | L2 | L3 | L4  | L5 | L6    | d1 | d2 | d3 | FIG | T         | 重量 KGS |
|-----------------|-------|-----|----|----|-----|----|-------|----|----|----|-----|-----------|--------|
| SBT50-SLN16-100 | 203.3 | 100 | 22 | 18 | 100 | 38 | 63.5  | 16 | 48 | -  | 1   | M10*1.5P  | 4.7    |
| SBT50-SLN16-135 | 238.3 | 135 | 22 | 18 | 100 | 38 | 98.5  | 16 | 48 | -  | 1   | M10*1.5P  |        |
| SBT50-SLN16-165 | 268.3 | 165 | 22 | 18 | 100 | 38 | 128.5 | 16 | 40 | 45 | 2   | M10*1.5P  |        |
| SBT50-SLN16-200 | 303.3 | 200 | 22 | 18 | 100 | 38 | 163.5 | 16 | 40 | 45 | 2   | M10*1.5P  |        |
| SBT50-SLN16-250 | 353.3 | 250 | 22 | 18 | 100 | 38 | 213.5 | 16 | 40 | 45 | 2   | M10*1.5P  |        |
| SBT50-SLN20-100 | 203.3 | 100 | 25 | 20 | 110 | 38 | 63.5  | 20 | 52 | -  | 1   | M12*1.75P | 4.8    |
| SBT50-SLN20-135 | 238.3 | 135 | 25 | 20 | 110 | 38 | 98.5  | 20 | 52 | -  | 1   | M12*1.75P |        |
| SBT50-SLN20-165 | 268.3 | 165 | 25 | 20 | 110 | 38 | 128.5 | 20 | 45 | 50 | 2   | M12*1.75P |        |
| SBT50-SLN20-200 | 303.3 | 200 | 25 | 20 | 110 | 38 | 163.5 | 20 | 45 | 50 | 2   | M12*1.75P |        |
| SBT50-SLN20-250 | 353.3 | 250 | 25 | 20 | 110 | 38 | 213.5 | 20 | 45 | 50 | 2   | M12*1.75P |        |
| SBT50-SLN25-105 | 208.3 | 105 | 24 | 25 | 120 | 38 | 68.5  | 25 | 65 | -  | 1   | M12*1.75P | 5.4    |
| SBT50-SLN25-135 | 238.3 | 135 | 24 | 25 | 120 | 38 | 98.5  | 25 | 65 | -  | 1   | M12*1.75P |        |
| SBT50-SLN25-165 | 268.3 | 165 | 24 | 25 | 120 | 38 | 128.5 | 25 | 50 | 55 | 2   | M12*1.75P |        |
| SBT50-SLN25-200 | 303.3 | 200 | 24 | 25 | 120 | 38 | 163.5 | 25 | 50 | 55 | 2   | M12*1.75P |        |
| SBT50-SLN25-250 | 353.3 | 250 | 24 | 25 | 120 | 38 | 213.5 | 25 | 50 | 55 | 2   | M12*1.75P |        |
| SBT50-SLN25-300 | 403.3 | 300 | 24 | 25 | 120 | 38 | 263.5 | 25 | 50 | 55 | 2   | M12*1.75P |        |
| SBT50-SLN32-105 | 208.3 | 105 | 24 | 28 | 120 | 38 | 68.5  | 32 | 72 | -  | 1   | M16*2.0P  | 5.5    |
| SBT50-SLN32-135 | 238.3 | 135 | 24 | 28 | 120 | 38 | 98.5  | 32 | 72 | -  | 1   | M16*2.0P  |        |
| SBT50-SLN32-165 | 268.3 | 165 | 24 | 28 | 120 | 38 | 128.5 | 32 | 60 | 65 | 2   | M16*2.0P  |        |
| SBT50-SLN32-200 | 303.3 | 200 | 24 | 28 | 120 | 38 | 163.5 | 32 | 60 | 65 | 2   | M16*2.0P  |        |
| SBT50-SLN32-250 | 353.3 | 250 | 24 | 28 | 120 | 38 | 213.5 | 32 | 60 | 65 | 2   | M16*2.0P  |        |
| SBT50-SLN32-300 | 403.3 | 300 | 24 | 28 | 120 | 38 | 263.5 | 32 | 60 | 65 | 2   | M16*2.0P  |        |

# SBT50-SLN 侧固式刀柄 SBT50-SLN SIDE LOCK END MILL HOLDER

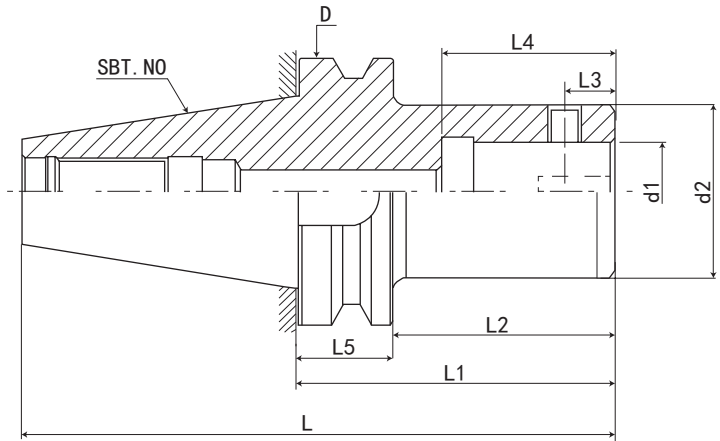


| 规格 Model          | L     | L1  | L2 | L3 | L4  | L5 | L6    | d1   | d2 | d3 | FIG | T        | 重量 KGS |
|-------------------|-------|-----|----|----|-----|----|-------|------|----|----|-----|----------|--------|
| SBT50-SLN40-115   | 218.3 | 115 | 30 | 32 | 120 | 38 | 78.5  | 40   | 80 | -  | 1   | M20*2.5P | 5.8    |
| SBT50-SLN40-135   | 238.3 | 135 | 30 | 32 | 120 | 38 | 98.5  | 40   | 80 | -  | 1   | M20*2.5P |        |
| SBT50-SLN40-165   | 268.3 | 165 | 30 | 32 | 120 | 38 | 128.5 | 40   | 70 | 75 | 2   | M16*2.0P |        |
| SBT50-SLN40-200   | 303.3 | 200 | 30 | 32 | 120 | 38 | 163.5 | 40   | 70 | 75 | 2   | M16*2.0P |        |
| SBT50-SLN40-250   | 353.3 | 250 | 30 | 32 | 120 | 38 | 213.5 | 40   | 70 | 75 | 2   | M16*2.0P |        |
| SBT50-SLN40-300   | 403.3 | 300 | 30 | 32 | 120 | 38 | 263.5 | 40   | 70 | 75 | 2   | M16*2.0P |        |
| SBT50-SLN42-115   | 218.3 | 115 | 30 | 32 | 120 | 38 | 78.5  | 42   | 80 | -  | 1   | M20*2.5P | 5.6    |
| SBT50-SLN42-135   | 238.3 | 135 | 30 | 32 | 120 | 38 | 98.5  | 42   | 80 | -  | 1   | M20*2.5P |        |
| SBT50-SLN42-165   | 268.3 | 165 | 30 | 32 | 120 | 38 | 128.5 | 42   | 70 | 75 | 2   | M16*2.0P |        |
| SBT50-SLN42-200   | 303.3 | 200 | 30 | 32 | 120 | 38 | 163.5 | 42   | 70 | 75 | 2   | M16*2.0P |        |
| SBT50-SLN50-120   | 221.3 | 120 | 35 | 35 | 120 | 38 | 78.5  | 50   | 90 | -  | 1   | M20*2.5P |        |
| SBT50-SLN50-150   | 253.3 | 150 | 35 | 35 | 120 | 38 | 113.5 | 50   | 85 | 90 | 2   | M20*2.5P |        |
| SBT50-SLN50-200   | 303.3 | 200 | 35 | 35 | 120 | 38 | 163.5 | 50   | 85 | 90 | 2   | M20*2.5P |        |
| SBT50-SLN50.8-120 | 221.3 | 120 | 35 | 35 | 120 | 38 | 78.5  | 50.8 | 90 | -  | 1   | M20*2.5P |        |
| SBT50-SLN50.8-150 | 253.3 | 150 | 35 | 35 | 120 | 38 | 113.5 | 50.8 | 85 | 90 | 2   | M20*2.5P |        |
| SBT50-SLN50.8-200 | 303.3 | 200 | 35 | 35 | 120 | 38 | 163.5 | 50.8 | 85 | 90 | 2   | M20*2.5P |        |

CNC TOOLS  
数控刀柄

## SBT-CK 镗头刀柄

## SBT-CK BORING HEAD SHANK



P.129



P.J39

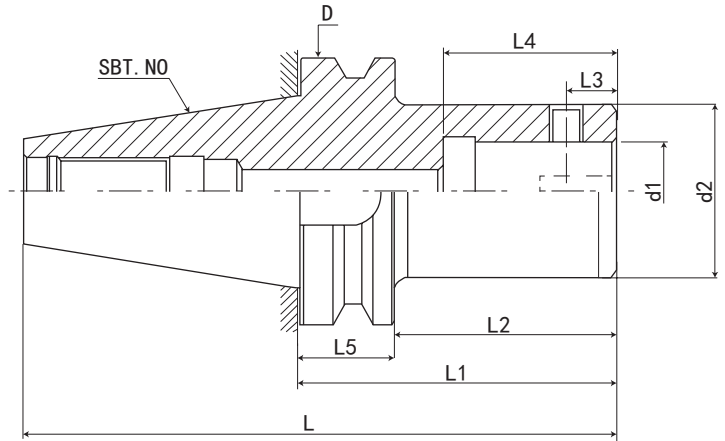


P.130

| 规格 Model      | L     | L1  | L2  | L3   | L4 | L5 | d1 | d2 | D  | T        | 重量 KGS |
|---------------|-------|-----|-----|------|----|----|----|----|----|----------|--------|
| SBT30-CK1-105 | 154.3 | 105 | 84  | 5.05 | 30 | 22 | 11 | 19 | 46 | M4*0.5P  | 0.51   |
| SBT30-CK2-75  | 124.3 | 75  | 54  | 6.62 | 31 | 22 | 14 | 24 | 46 | M5*0.5P  | 0.44   |
| SBT30-CK2-120 | 169.3 | 120 | 99  | 6.62 | 31 | 22 | 14 | 24 | 46 | M5*0.5P  | 0.57   |
| SBT30-CK3-80  | 129.3 | 80  | 59  | 8    | 35 | 22 | 18 | 31 | 46 | M6*0.75P | 0.45   |
| SBT30-CK3-120 | 169.3 | 120 | 99  | 8    | 35 | 22 | 18 | 31 | 46 | M6*0.75P | 0.67   |
| SBT30-CK4-85  | 134.3 | 85  | 64  | 10   | 39 | 22 | 22 | 39 | 46 | M8*0.75P | 0.46   |
| SBT30-CK4-120 | 169.3 | 120 | 99  | 10   | 39 | 22 | 22 | 39 | 46 | M8*0.75P | 0.78   |
| SBT30-CK5-85  | 134.3 | 85  | 64  | 13   | 45 | 22 | 28 | 50 | 46 | M10*1.0P | 0.76   |
| SBT30-CK5-120 | 169.3 | 120 | 99  | 13   | 45 | 22 | 28 | 50 | 46 | M10*1.0P | 0.8    |
| SBT30-CK6-85  | 134.3 | 85  | 64  | 16   | 55 | 22 | 36 | 63 | 46 | M12*1.0P | 0.85   |
| SBT30-CK6-135 | 184.3 | 135 | 114 | 16   | 55 | 22 | 36 | 63 | 46 | M12*1.0P | 0.93   |
| SBT40-CK1-105 | 171.4 | 105 | 79  | 5.05 | 30 | 27 | 11 | 19 | 63 | M4*0.5P  |        |
| SBT40-CK2-80  | 146.4 | 80  | 54  | 6.62 | 31 | 27 | 14 | 24 | 63 | M5*0.5P  |        |
| SBT40-CK2-120 | 186.4 | 120 | 94  | 6.62 | 31 | 27 | 14 | 24 | 63 | M5*0.5P  |        |
| SBT40-CK3-85  | 151.4 | 85  | 59  | 8    | 35 | 27 | 18 | 31 | 63 | M6*0.75P |        |
| SBT40-CK3-135 | 201.4 | 135 | 109 | 8    | 35 | 27 | 18 | 31 | 63 | M6*0.75P |        |
| SBT40-CK3-165 | 231.4 | 165 | 139 | 8    | 35 | 27 | 18 | 31 | 63 | M6*0.75P |        |
| SBT40-CK4-90  | 156.4 | 90  | 64  | 10   | 39 | 27 | 22 | 39 | 63 | M8*0.75P |        |
| SBT40-CK4-135 | 201.4 | 135 | 109 | 10   | 39 | 27 | 22 | 39 | 63 | M8*0.75P |        |
| SBT40-CK4-165 | 231.4 | 165 | 139 | 10   | 39 | 27 | 22 | 39 | 63 | M8*0.75P |        |
| SBT40-CK4-195 | 261.4 | 195 | 169 | 10   | 39 | 27 | 22 | 39 | 63 | M8*0.75P |        |
| SBT40-CK5-65  | 106.4 | 65  | 39  | 13   | 45 | 27 | 28 | 50 | 63 | M10*1.0P |        |
| SBT40-CK5-105 | 171.4 | 105 | 79  | 13   | 45 | 27 | 28 | 50 | 63 | M10*1.0P |        |
| SBT40-CK5-135 | 201.4 | 135 | 109 | 13   | 45 | 27 | 28 | 50 | 63 | M10*1.0P |        |
| SBT40-CK5-165 | 231.4 | 165 | 139 | 13   | 45 | 27 | 28 | 50 | 63 | M10*1.0P |        |
| SBT40-CK5-195 | 261.4 | 195 | 169 | 13   | 45 | 27 | 28 | 50 | 63 | M10*1.0P |        |
| SBT40-CK6-65  | 131.4 | 65  | 39  | 16   | 55 | 27 | 36 | 63 | 63 | M12*1.0P |        |
| SBT40-CK6-105 | 171.4 | 105 | 79  | 16   | 55 | 27 | 36 | 63 | 63 | M12*1.0P |        |
| SBT40-CK6-135 | 201.4 | 135 | 109 | 16   | 55 | 27 | 36 | 63 | 63 | M12*1.0P |        |
| SBT40-CK6-165 | 231.4 | 165 | 139 | 16   | 55 | 27 | 36 | 63 | 63 | M12*1.0P |        |
| SBT40-CK6-195 | 261.4 | 195 | 169 | 16   | 55 | 27 | 36 | 63 | 63 | M12*1.0P |        |
| SBT40-CK6-245 | 311.4 | 245 | 219 | 16   | 55 | 27 | 36 | 63 | 63 | M12*1.0P |        |

# SBT50-CK 镗头刀柄

## SBT50-CK BORING HEAD SHANK



P.129



P.J39



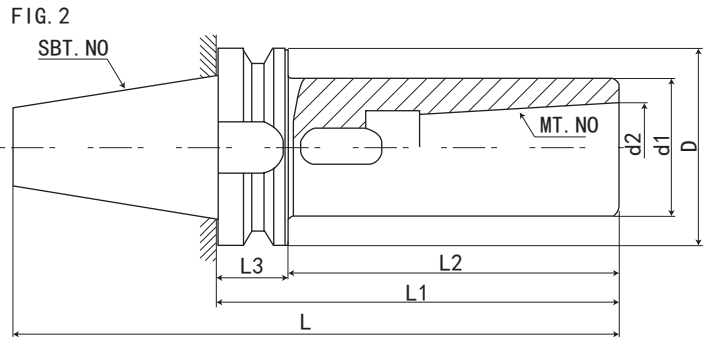
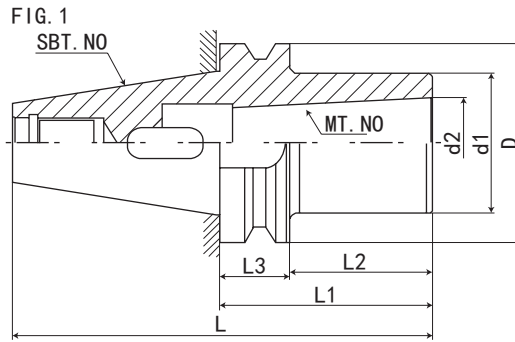
P.130

| 规格 Model      | L     | L1  | L2    | L3   | L4 | L5 | d1 | d2 | D   | T        | 重量 KGS |
|---------------|-------|-----|-------|------|----|----|----|----|-----|----------|--------|
| SBT50-CK1-135 | 238.3 | 135 | 98.5  | 5.05 | 30 | 38 | 11 | 19 | 100 | M4*0.5P  | 4.3    |
| SBT50-CK2-90  | 193.3 | 90  | 53.5  | 6.62 | 31 | 38 | 14 | 24 | 100 | M5*0.5P  |        |
| SBT50-CK2-115 | 218.3 | 115 | 78.5  | 6.62 | 31 | 38 | 14 | 24 | 100 | M5*0.5P  | 4.1    |
| SBT50-CK2-150 | 253.3 | 150 | 113.5 | 6.62 | 31 | 38 | 14 | 24 | 100 | M5*0.5P  | 4.5    |
| SBT50-CK3-95  | 198.3 | 95  | 58.5  | 8    | 35 | 38 | 18 | 31 | 100 | M6*0.75P |        |
| SBT50-CK3-125 | 228.3 | 125 | 88.5  | 8    | 35 | 38 | 18 | 31 | 100 | M6*0.75P | 4.3    |
| SBT50-CK3-165 | 268.3 | 165 | 128.5 | 8    | 35 | 38 | 18 | 31 | 100 | M6*0.75P | 4.7    |
| SBT50-CK3-205 | 308.3 | 205 | 168.5 | 8    | 35 | 38 | 18 | 31 | 100 | M6*0.75P | 4.9    |
| SBT50-CK4-105 | 208.3 | 105 | 68.5  | 10   | 39 | 38 | 22 | 39 | 100 | M8*0.75P |        |
| SBT50-CK4-165 | 268.3 | 165 | 128.5 | 10   | 39 | 38 | 22 | 39 | 100 | M8*0.75P | 5.1    |
| SBT50-CK4-225 | 328.3 | 225 | 188.5 | 10   | 39 | 38 | 22 | 39 | 100 | M8*0.75P |        |
| SBT50-CK4-255 | 358.3 | 255 | 218.5 | 10   | 39 | 38 | 22 | 39 | 100 | M8*0.75P | 5.6    |
| SBT50-CK4-300 | 403.3 | 300 | 263.5 | 10   | 39 | 38 | 22 | 39 | 100 | M8*0.75P |        |
| SBT50-CK5-90  | 193.3 | 90  | 53.5  | 13   | 45 | 38 | 28 | 50 | 100 | M10*1.0P |        |
| SBT50-CK5-120 | 223.3 | 120 | 83.5  | 13   | 45 | 38 | 28 | 50 | 100 | M10*1.0P |        |
| SBT50-CK5-165 | 268.3 | 165 | 128.5 | 13   | 45 | 38 | 28 | 50 | 100 | M10*1.0P | 5.5    |
| SBT50-CK5-205 | 308.3 | 205 | 168.5 | 13   | 45 | 38 | 28 | 50 | 100 | M10*1.0P | 5.8    |
| SBT50-CK5-240 | 343.3 | 240 | 203.5 | 13   | 45 | 38 | 28 | 50 | 100 | M10*1.0P |        |
| SBT50-CK5-285 | 388.3 | 285 | 248.5 | 13   | 45 | 38 | 28 | 50 | 100 | M10*1.0P |        |
| SBT50-CK5-320 | 423.3 | 320 | 283.5 | 13   | 45 | 38 | 28 | 50 | 100 | M10*1.0P |        |
| SBT50-CK6-95  | 198.3 | 95  | 58.5  | 16   | 55 | 38 | 36 | 63 | 100 | M12*1.0P | 4.9    |
| SBT50-CK6-165 | 268.3 | 165 | 128.5 | 16   | 55 | 38 | 36 | 63 | 100 | M12*1.0P |        |
| SBT50-CK6-240 | 343.3 | 240 | 203.5 | 16   | 55 | 38 | 36 | 63 | 100 | M12*1.0P |        |
| SBT50-CK6-300 | 403.3 | 300 | 263.5 | 16   | 55 | 38 | 36 | 63 | 100 | M12*1.0P | 9.5    |
| SBT50-CK6-360 | 463.3 | 360 | 323.5 | 16   | 55 | 38 | 36 | 63 | 100 | M12*1.0P | 10.5   |
| SBT50-CK7-150 | 253.3 | 150 | 113.5 | 19.1 | 55 | 38 | 46 | 90 | 100 | M20*1.5P |        |
| SBT50-CK7-210 | 313.3 | 210 | 173.5 | 19.1 | 55 | 38 | 46 | 90 | 100 | M20*1.5P |        |
| SBT50-CK7-300 | 403.3 | 300 | 263.5 | 19.1 | 55 | 38 | 46 | 90 | 100 | M20*1.5P |        |
| SBT50-CK7-360 | 463.3 | 360 | 323.5 | 19.1 | 55 | 38 | 46 | 90 | 100 | M20*1.5P |        |

CNC TOOLS  
数控刀柄

## SBT-MTA 带扁尾莫氏刀柄

## SBT-MTA TAPER ADAPTER (MORSE)



P.129

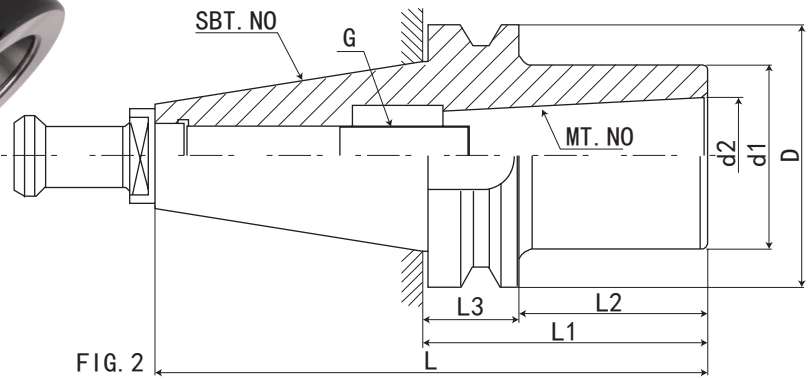
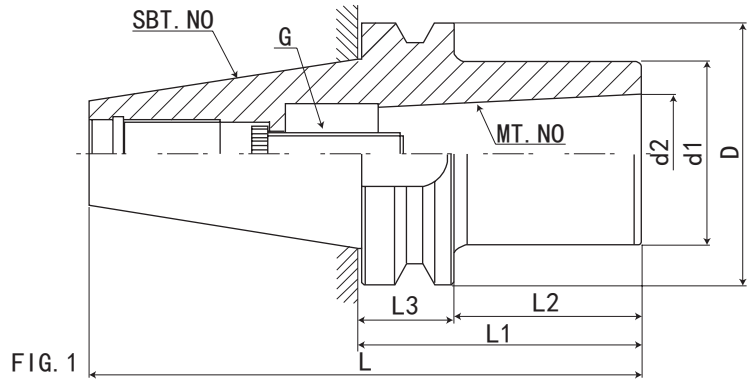
| 规格 Model       | L     | L1  | L2    | L3 | D   | d1 | d2     | FIG | 夹持范围 Range | 重量 KGS |
|----------------|-------|-----|-------|----|-----|----|--------|-----|------------|--------|
| SBT30-MTA1-60  | 109.3 | 60  | 39    | 22 | 46  | 25 | 12.065 | 1   | Φ2-Φ14     |        |
| SBT30-MTA2-60  | 109.3 | 60  | 39    | 22 | 46  | 32 | 17.18  | 1   | Φ14-Φ23    |        |
| SBT30-MTA3-80  | 129.3 | 80  | 59    | 22 | 46  | 40 | 23.825 | 1   | Φ23-Φ32    |        |
| SBT40-MTA1-45  | 111.4 | 45  | 19    | 27 | 63  | 25 | 12.065 | 1   | Φ2-Φ14     |        |
| SBT40-MTA1-120 | 186.4 | 120 | 94    | 27 | 63  | 25 | 12.065 | 2   | Φ2-Φ14     |        |
| SBT40-MTA2-45  | 111.4 | 45  | 19    | 27 | 63  | 32 | 17.18  | 1   | Φ14-Φ23    |        |
| SBT40-MTA2-120 | 186.4 | 120 | 94    | 27 | 63  | 32 | 17.18  | 2   | Φ14-Φ23    |        |
| SBT40-MTA3-75  | 141.4 | 75  | 49    | 27 | 63  | 40 | 23.825 | 1   | Φ23-Φ32    |        |
| SBT40-MTA3-135 | 201.4 | 135 | 109   | 27 | 63  | 40 | 23.825 | 2   | Φ23-Φ32    |        |
| SBT40-MTA4-90  | 156.4 | 90  | 64    | 27 | 63  | 48 | 31.267 | 1   | Φ32-Φ50    |        |
| SBT40-MTA4-180 | 246.4 | 180 | 154   | 27 | 63  | 48 | 31.267 | 2   | Φ32-Φ50    |        |
| SBT50-MTA1-45  | 148.3 | 45  | 8.5   | 38 | 100 | 25 | 12.065 | 1   | Φ2-Φ14     |        |
| SBT50-MTA1-120 | 223.3 | 120 | 83.5  | 38 | 100 | 25 | 12.065 | 2   | Φ2-Φ14     | 4.3    |
| SBT50-MTA1-180 | 283.3 | 180 | 143.5 | 38 | 100 | 25 | 12.065 | 2   | Φ2-Φ14     |        |
| SBT50-MTA1-210 | 313.3 | 210 | 173.5 | 38 | 100 | 25 | 12.065 | 2   | Φ2-Φ14     |        |
| SBT50-MTA2-60  | 163.3 | 60  | 23.5  | 38 | 100 | 32 | 17.18  | 1   | Φ14-Φ23    |        |
| SBT50-MTA2-135 | 238.3 | 135 | 98.5  | 38 | 100 | 32 | 17.18  | 2   | Φ14-Φ23    | 4.5    |
| SBT50-MTA2-180 | 283.3 | 180 | 143.5 | 38 | 100 | 32 | 17.18  | 2   | Φ14-Φ23    |        |
| SBT50-MTA2-210 | 313.3 | 210 | 173.5 | 38 | 100 | 32 | 17.18  | 2   | Φ14-Φ23    |        |
| SBT50-MTA2-250 | 353.3 | 250 | 213.5 | 38 | 100 | 32 | 17.18  | 2   | Φ14-Φ23    |        |
| SBT50-MTA3-75  | 178.3 | 75  | 38.5  | 38 | 100 | 40 | 23.825 | 1   | Φ23-Φ32    | 4.1    |
| SBT50-MTA3-150 | 253.3 | 150 | 113.5 | 38 | 100 | 40 | 23.825 | 2   | Φ23-Φ32    |        |
| SBT50-MTA3-180 | 283.3 | 180 | 143.5 | 38 | 100 | 40 | 23.825 | 2   | Φ23-Φ32    |        |
| SBT50-MTA3-210 | 313.3 | 210 | 173.5 | 38 | 100 | 40 | 23.825 | 2   | Φ23-Φ32    |        |
| SBT50-MTA3-250 | 353.3 | 250 | 213.5 | 38 | 100 | 40 | 23.825 | 2   | Φ23-Φ32    |        |
| SBT50-MTA3-300 | 403.3 | 300 | 263.5 | 38 | 100 | 40 | 23.825 | 2   | Φ23-Φ32    |        |
| SBT50-MTA4-75  | 178.3 | 75  | 38.5  | 38 | 100 | 48 | 31.267 | 1   | Φ32-Φ50    | 4      |
| SBT50-MTA4-180 | 283.3 | 180 | 143.5 | 38 | 100 | 48 | 31.267 | 2   | Φ32-Φ50    |        |
| SBT50-MTA4-210 | 313.3 | 210 | 173.5 | 38 | 100 | 48 | 31.267 | 2   | Φ32-Φ50    |        |
| SBT50-MTA4-250 | 353.3 | 250 | 213.5 | 38 | 100 | 48 | 31.267 | 2   | Φ32-Φ50    |        |
| SBT50-MTA4-300 | 403.3 | 300 | 263.5 | 38 | 100 | 48 | 31.267 | 2   | Φ32-Φ50    |        |
| SBT50-MTA5-115 | 218.3 | 115 | 78.5  | 38 | 100 | 65 | 44.399 | 1   | Φ50-Φ75    |        |
| SBT50-MTA5-210 | 313.3 | 210 | 173.5 | 38 | 100 | 66 | 45.399 | 2   | Φ50-Φ76    |        |
| SBT50-MTA5-250 | 353.3 | 250 | 213.5 | 38 | 100 | 67 | 46.399 | 2   | Φ50-Φ77    |        |
| SBT50-MTA6-200 | 303.3 | 200 | 163.5 | 38 | 100 | 85 | 63.348 | 1   | Φ75-Φ100   |        |
| SBT50-MTA6-280 | 383.3 | 280 | 243.5 | 38 | 100 | 85 | 63.348 | 2   | Φ75-Φ100   |        |

数控刀柄  
CNC TOOLS



# SBT-MTB 无扁尾莫氏刀柄

## SBT-MTB MORSE TAP HOLDER



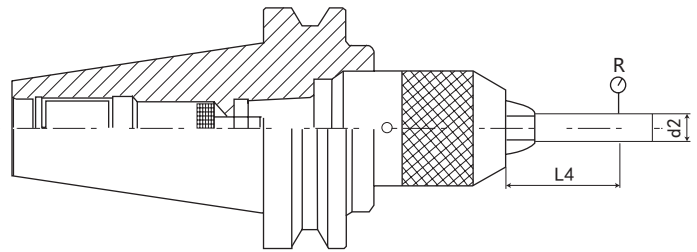
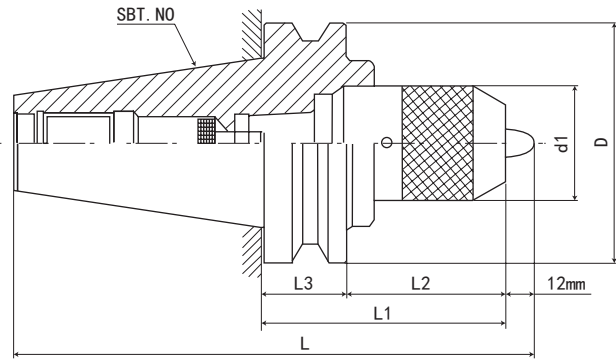
P.129

| 规格 Model       | L     | L1  | L2    | L3 | D   | d1 | d2     | FIG | 夹持范围 Range | 重量 KGS |
|----------------|-------|-----|-------|----|-----|----|--------|-----|------------|--------|
| SBT30-MTB1-60  | 109.3 | 60  | 39    | 22 | 46  | 25 | 12.065 | 1   | Φ10-Φ14    |        |
| SBT30-MTB2-60  | 109.3 | 60  | 39    | 22 | 46  | 32 | 17.18  | 1   | Φ16-Φ22    |        |
| SBT30-MTB3-80  | 129.3 | 80  | 59    | 22 | 46  | 40 | 23.825 | 1   | Φ24-Φ32    |        |
| SBT40-MTB1-45  | 111.4 | 45  | 19    | 27 | 63  | 25 | 12.065 | 1   | Φ10-Φ14    |        |
| SBT40-MTB1-120 | 186.4 | 120 | 94    | 27 | 63  | 25 | 12.065 | 2   | Φ10-Φ14    |        |
| SBT40-MTB2-45  | 111.4 | 45  | 19    | 27 | 63  | 32 | 17.18  | 1   | Φ16-Φ22    |        |
| SBT40-MTB2-120 | 186.4 | 120 | 94    | 27 | 63  | 32 | 17.18  | 2   | Φ16-Φ22    |        |
| SBT40-MTB3-75  | 141.4 | 75  | 49    | 27 | 63  | 40 | 23.825 | 1   | Φ24-Φ32    |        |
| SBT40-MTB3-135 | 201.4 | 135 | 109   | 27 | 63  | 40 | 23.825 | 2   | Φ24-Φ32    |        |
| SBT40-MTB4-90  | 156.4 | 90  | 64    | 27 | 63  | 48 | 31.267 | 1   | Φ32-Φ50    |        |
| SBT40-MTB4-180 | 246.4 | 180 | 154   | 27 | 63  | 48 | 31.267 | 2   | Φ32-Φ50    |        |
| SBT50-MTB1-45  | 148.3 | 45  | 8.5   | 38 | 100 | 25 | 12.065 | 1   | Φ10-Φ14    |        |
| SBT50-MTB1-120 | 223.3 | 120 | 83.5  | 38 | 100 | 25 | 12.065 | 2   | Φ10-Φ14    |        |
| SBT50-MTB2-60  | 163.3 | 60  | 23.5  | 38 | 100 | 32 | 17.18  | 1   | Φ16-Φ22    |        |
| SBT50-MTB2-135 | 238.3 | 135 | 98.5  | 38 | 100 | 32 | 17.18  | 2   | Φ16-Φ22    |        |
| SBT50-MTB3-75  | 178.3 | 75  | 38.5  | 38 | 100 | 40 | 23.825 | 1   | Φ24-Φ32    |        |
| SBT50-MTB3-150 | 253.3 | 150 | 113.5 | 38 | 100 | 40 | 23.825 | 2   | Φ24-Φ32    |        |
| SBT50-MTB4-75  | 178.3 | 75  | 38.5  | 38 | 100 | 48 | 31.267 | 1   | Φ32-Φ50    |        |
| SBT50-MTB4-180 | 283.3 | 180 | 143.5 | 38 | 100 | 48 | 31.267 | 2   | Φ32-Φ50    |        |
| SBT50-MTB5-115 | 218.3 | 115 | 78.5  | 38 | 100 | 65 | 44.399 | 1   | Φ40-Φ75    |        |
| SBT50-MTB5-210 | 313.3 | 210 | 173.5 | 38 | 100 | 66 | 45.399 | 2   | Φ40-Φ75    |        |

CNC TOOLS  
数控刀柄

## SBT-APU 一体式钻夹头刀柄

## SBT-APU DRILL CHUCK HOLDER



P.131

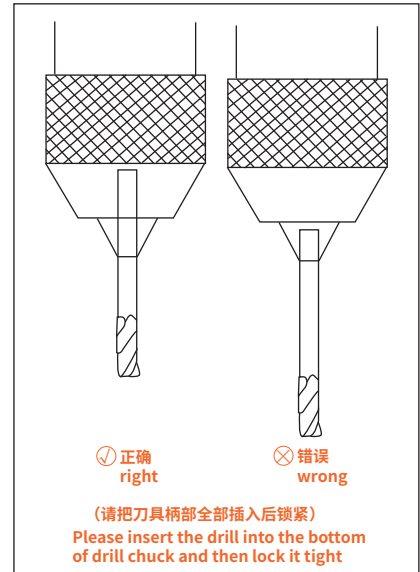


P.129



P.158

| 规格 / 型号 Model   | L     | L1  | L2    | L3 | d1 | d2 | D   | R    | 夹持范围 Range | 重量 KGS |
|-----------------|-------|-----|-------|----|----|----|-----|------|------------|--------|
| SBT30-APU13-110 | 159.3 | 110 | 89    | 22 | 50 | 13 | 46  | 0.08 | 1-13mm     | 1.85   |
| SBT30-APU16-115 | 164.3 | 115 | 94    | 22 | 57 | 16 | 46  | 0.08 | 1-16mm     | 2.18   |
| SBT40-APU13-110 | 176.4 | 110 | 84    | 27 | 50 | 13 | 63  | 0.08 | 1-13mm     | 2      |
| SBT40-APU16-110 | 176.4 | 110 | 84    | 27 | 57 | 16 | 63  | 0.08 | 1-16mm     | 2.35   |
| SBT50-APU13-130 | 233.3 | 130 | 93.5  | 38 | 50 | 13 | 100 | 0.08 | 1-13mm     | 5.5    |
| SBT50-APU13-180 | 283.3 | 180 | 143.5 | 38 | 50 | 13 | 100 | 0.08 | 1-13mm     | 5.85   |
| SBT50-APU16-130 | 233.3 | 130 | 93.5  | 38 | 57 | 16 | 100 | 0.08 | 1-16mm     | 5.35   |
| SBT50-APU16-180 | 283.3 | 180 | 143.5 | 38 | 57 | 16 | 100 | 0.08 | 1-16mm     | 5.85   |



### 特点:

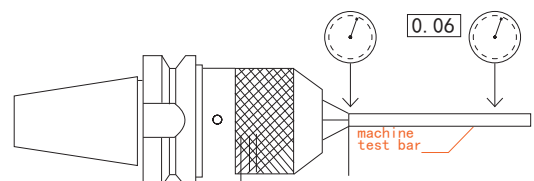
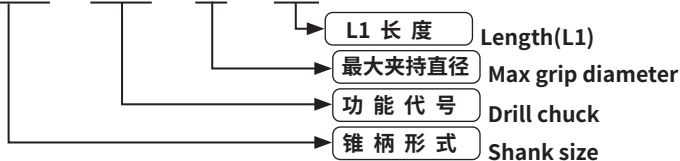
注:

- ◎ 一体式结构，减少了连接误差精度，内部用螺纹结构，就不会出现夹头脱落现象
- ◎ 用于钻头、铰刀等夹持，不可用于丝锥和铣刀夹持
- ◎ 一体刀柄缩短刀具长度，提高加工精度，增加使用寿命
- ◎ 有自锁功能，附带专用扳手，请勿用其它工具
- ◎ APU 偏摆精度为 0.06，如需更高精度要求请使用 ER 或 SK 系列
- ◎ 扳手、拉钉须另行购买

### Features:

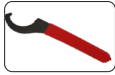
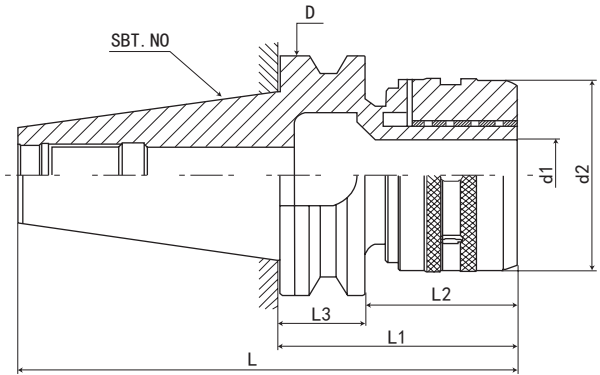
- ◎ The shank and keyless drill chuck are combined together so as to avoid the drill chuck slipping out for heavy-duty and high speed cutting and improve the precision.
- ◎ Not be used for gripping draw bolt and milling tools, instead of drill bit and reamer.
- ◎ APU drill chuck shorten the length while length the working life of tool.
- ◎ Each APU drill chuck attached 1pc APU wrench.
- ◎ The APU leaning precision is 0.06mm, like the need high accuracy request, please use ER or the SK serie.
- ◎ The spanner、pull stud must purchase alone.

SBT40 - APU - 13 - 110

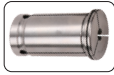


# SBT-C 型高精度强力刀柄

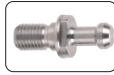
## SBT-C FORCE MILLING CHUCK



P.131



P.116



P.129

| 规格 / 型号 Model | L     | L1  | L2    | L3 | D   | d1 | d2 | 夹持范围 Range   |
|---------------|-------|-----|-------|----|-----|----|----|--|
| SBT30-C20-80  | 129.3 | 80  | 59    | 22 | 46  | 20 | 58 | 3 4 5 6 8 10 12 14 16 20                               |
| SBT30-C25-100 | 149.3 | 100 | 79    | 22 | 46  | 25 | 63 | 3 4 5 6 8 10 12 14 16 18 20 25                         |
| SBT30-C32-105 | 154.3 | 105 | 84    | 22 | 46  | 32 | 73 | 3 4 5 6 8 10 12 14 16 18 20 22 24 25 32                |
| SBT40-C20-100 | 166.4 | 100 | 74    | 27 | 63  | 20 | 58 | 3 4 5 6 8 10 12 14 16 20                               |
| SBT40-C25-100 | 166.4 | 100 | 74    | 27 | 63  | 25 | 63 | 3 4 5 6 8 10 12 14 16 18 20 25                         |
| SBT40-C25-135 | 201.4 | 135 | 109   | 27 | 63  | 25 | 63 | 3 4 5 6 8 10 12 14 16 18 20 25                         |
| SBT40-C32-105 | 171.4 | 105 | 79    | 27 | 63  | 32 | 73 | 3 4 5 6 8 10 12 14 16 18 20 22 24 25 32                |
| SBT40-C32-135 | 201.4 | 135 | 109   | 27 | 63  | 32 | 73 | 3 4 5 6 8 10 12 14 16 18 20 22 24 25 32                |
| SBT40-C32-165 | 231.4 | 165 | 139   | 27 | 63  | 32 | 73 | 3 4 5 6 8 10 12 14 16 18 20 22 24 25 32                |
| SBT40-C32-200 | 266.4 | 200 | 174   | 27 | 63  | 32 | 73 | 3 4 5 6 8 10 12 14 16 18 20 22 24 25 32                |
| SBT50-C25-110 | 213.3 | 110 | 73.5  | 38 | 100 | 25 | 63 | 3 4 5 6 8 10 12 14 16 18 20 25                         |
| SBT50-C25-135 | 238.3 | 135 | 98.5  | 38 | 100 | 25 | 63 | 3 4 5 6 8 10 12 14 16 18 20 25                         |
| SBT50-C25-165 | 268.3 | 165 | 128.5 | 38 | 100 | 25 | 63 | 3 4 5 6 8 10 12 14 16 18 20 25                         |
| SBT50-C32-110 | 213.3 | 110 | 73.5  | 38 | 100 | 32 | 73 | 3 4 5 6 8 10 12 14 16 18 20 22 24 25 32                |
| SBT50-C32-135 | 238.3 | 135 | 98.5  | 38 | 100 | 32 | 73 | 3 4 5 6 8 10 12 14 16 18 20 22 24 25 32                |
| SBT50-C32-165 | 268.3 | 165 | 128.5 | 38 | 100 | 32 | 73 | 3 4 5 6 8 10 12 14 16 18 20 22 24 25 32                |
| SBT50-C32-200 | 303.3 | 200 | 163.5 | 38 | 100 | 32 | 73 | 3 4 5 6 8 10 12 14 16 18 20 22 24 25 32                |
| SBT50-C32-250 | 353.3 | 250 | 213.5 | 38 | 100 | 32 | 73 | 3 4 5 6 8 10 12 14 16 18 20 22 24 25 32                |
| SBT50-C32-300 | 403.3 | 300 | 263.5 | 38 | 100 | 32 | 73 | 3 4 5 6 8 10 12 14 16 18 20 22 24 25 32                |
| SBT50-C42-135 | 238.3 | 135 | 98.5  | 38 | 100 | 42 | 88 | 3 4 5 6 8 10 12 14 16 18 20 22 24 25 28 30 32 34 36 42 |
| SBT50-C42-165 | 268.3 | 165 | 128.5 | 38 | 100 | 42 | 88 | 3 4 5 6 8 10 12 14 16 18 20 22 24 25 28 30 32 34 36 42 |
| SBT50-C42-200 | 303.3 | 200 | 163.5 | 38 | 100 | 42 | 88 | 3 4 5 6 8 10 12 14 16 18 20 22 24 25 28 30 32 34 36 42 |

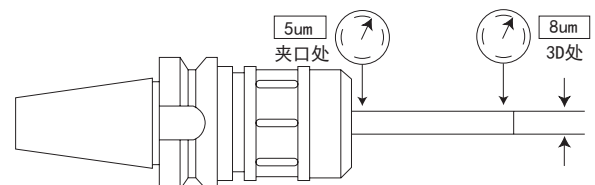
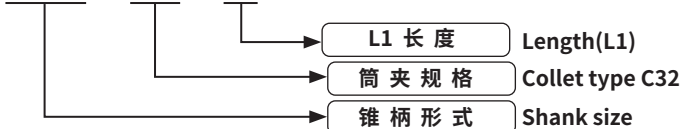
### 特点:

- 高速、高精度、高寿命直柄刀具系列
- ◎材质: 20CrMnTi/15CrMn
- ◎硬度: HRC58-60, 渗碳深度 > 0.8mm
- ◎锥柄公差等级: ≤ AT3
- ◎刀柄内孔分割了六槽, 以防止刀具转动, 增大夹持力
- ◎采用特殊材料制作滚针轴承保持架, 延长使用寿命, 增强夹紧力
- ◎具有夹持力大, 定点精度高, 特别适用于强力切削
- ◎可提供两种外观: 光饰或涂层处理
- ◎内孔多次研磨, 可达 Ra0.4, 起到镜面效果
- ◎外圆及端面多次研磨, 可达 Ra0.4, 起到镜面效果
- ◎表面“环保”特殊涂层处理, 提高表面硬度、耐磨性, 提高清洁度, 精度更稳定, 表面更光滑, 防锈、防腐蚀效果更好, 手感更舒适, 外观更美观
- ◎扳手、拉钉、筒夹须另行购买

### Features:

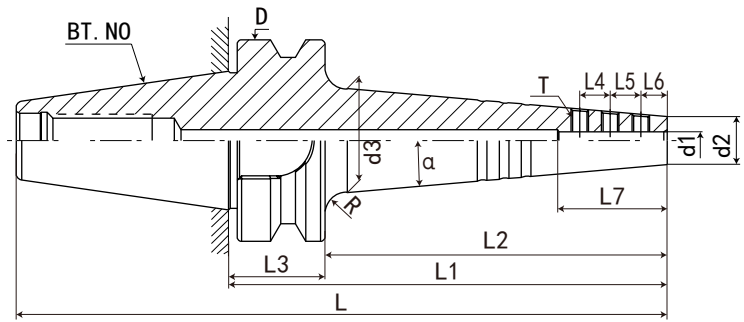
- High speed, high accuracy, high durability C-STRAIGHT TOOL SERIES
- ◎ Material: 20CrMnTi/15CrMn;
- ◎ Hardness: HRC58-60, Carbon depth > 0.8
- ◎ Tolerance class: ≤ AT3
- ◎ Inner hole of the shank divide into 6 troughs to prevent the insert remove, increase the grasp force
- ◎ Ball bearing cage is made of special material, improve the endurance, enhance the grasp force
- ◎ Grasp force strong, centering accuracy high, suit to heavy cutting
- ◎ Two kinds looks provide: polishing or chemical nickel-plating processing;
- ◎ Inner hole grinding for many times, so as to reach Ra0.4, has a mirror effect;
- ◎ End and the cylindrical are grinding for many times, can reach Ra0.4, has a mirror effect;
- ◎ Surface "environmental protection", special coating surface treatment, improve the hardness and endurance of the surface, cleanliness better, accuracy stable, surface more smooth, antirust, feel comfortable, appearance nice.
- ◎ The spanner, pull stud chuck must purchase alone.

SBT30 - C20 - 80



## SBT-SLD 小径侧固刀柄

## SBT-SLD SMALL DIAMETER SIDE LOCK TOOL HOLDER



P.129

| 规格 Model          | L     | L1  | L2 | L3 | L4 | L5 | L6 | L7 | D  | d1 | d2 | d3   | T               | $\alpha$ | R | 重量 KGS |
|-------------------|-------|-----|----|----|----|----|----|----|----|----|----|------|-----------------|----------|---|--------|
| SBT30-SLD3-80-A5  | 128.4 | 80  | 58 | 22 | 6  | 6  | 6  | 18 | 46 | 3  | 9  | 18.5 | M3.5*3*0.35P*T6 | 5°       | 5 |        |
| SBT30-SLD3-100-A5 | 148.4 | 100 | 78 | 22 | 6  | 6  | 6  | 18 | 46 | 3  | 9  | 22   | M3.5*3*0.35P*T6 | 5°       | 5 |        |
| SBT30-SLD4-80-A5  | 128.4 | 80  | 58 | 22 | 7  | 7  | 6  | 20 | 46 | 4  | 11 | 20.5 | M4*2.8*0.5P*H2  | 5°       | 5 |        |
| SBT30-SLD4-100-A5 | 148.4 | 100 | 78 | 22 | 7  | 7  | 6  | 20 | 46 | 4  | 11 | 24   | M4*2.8*0.5P*H2  | 5°       | 5 |        |
| SBT30-SLD6-80-A5  | 128.4 | 80  | 58 | 22 | 8  | 8  | 6  | 22 | 46 | 6  | 13 | 22.5 | M5*4*0.5P*H2.5  | 5°       | 5 |        |
| SBT30-SLD6-100-A5 | 148.4 | 100 | 78 | 22 | 8  | 8  | 6  | 22 | 46 | 6  | 13 | 25.5 | M5*4*0.5P*H2.5  | 5°       | 5 |        |
| SBT30-SLD8-80-A5  | 128.4 | 80  | 58 | 22 | 10 | 10 | 7  | 27 | 46 | 8  | 15 | 24.5 | M5*4*0.5P*H2.5  | 5°       | 5 |        |
| SBT30-SLD8-100-A5 | 148.4 | 100 | 78 | 22 | 10 | 10 | 7  | 27 | 46 | 8  | 15 | 28   | M5*4*0.5P*H2.5  | 5°       | 5 |        |

### SLD 侧固式刀柄延长杆专用螺丝

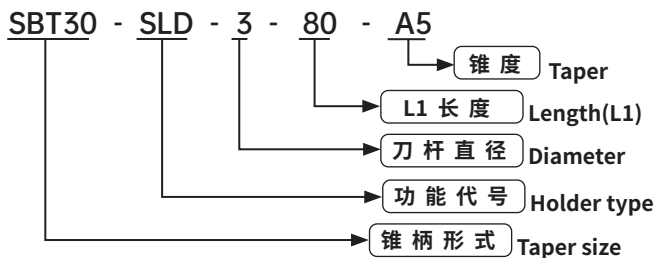
SLD side fixed extension rod special screw

| 规格 Model        | 使用孔径 D Using aperture |
|-----------------|-----------------------|
| M3.5×3×P0.35×T6 | D3                    |
| M4×2.8×P0.5×T8  | D4                    |
| M4×4×P0.5×T8    | D4                    |
| M5×3.5×P0.5×T10 | D6                    |
| M5×5×P0.5×T10   | D6 D8 D10             |
| M6×4×P0.75×T15  | D12                   |
| M6×6×P0.75×T15  | D12                   |
| M8×5×P0.75×L4   | D16 D20               |
| M4×2.8×P0.5×H2  | D4                    |
| M5×4×P0.5×H2.5  | D6 D8 D10             |
| M6×4×P0.75×H3   | D12                   |
| M6×5×P0.75×H3   | D12                   |

备注：梅花扳手“T”，六角扳手“H”

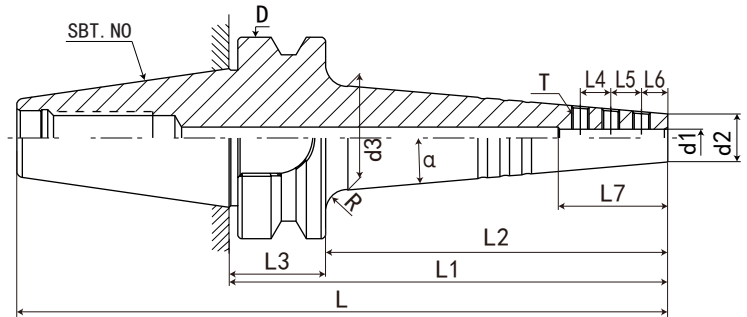
六角扳手：更大的锁紧力（需注意控制尺寸）

梅花扳手：使用更方便



## SBT40-SLD 小径侧固刀柄

## SBT40-SLD SMALL DIAMETER SIDE LOCK TOOL HOLDER



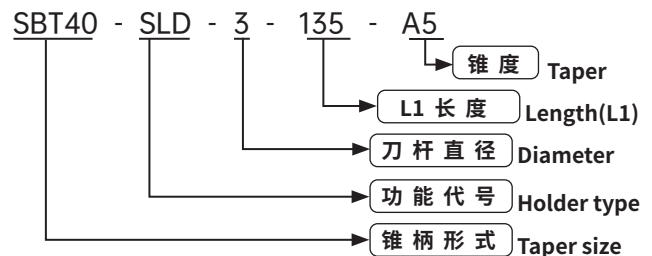
| 规格 Model           | L     | L1  | L2  | L3 | L4 | L5 | L6 | L7 | D  | d1 | d2 | d3   | T               | $\alpha$ | R | 重量 KGS |
|--------------------|-------|-----|-----|----|----|----|----|----|----|----|----|------|-----------------|----------|---|--------|
| SBT40-SLD3-135-A5  | 200.4 | 135 | 108 | 27 | 6  | 6  | 6  | 18 | 63 | 3  | 9  | 27   | M3.5*3*0.35P*T6 | 5°       | 5 |        |
| SBT40-SLD4-135-A5  | 200.4 | 135 | 108 | 27 | 7  | 7  | 6  | 20 | 63 | 4  | 11 | 29   | M4*2.8*0.5P*H2  | 5°       | 5 |        |
| SBT40-SLD6-135-A5  | 200.4 | 135 | 108 | 27 | 8  | 8  | 6  | 22 | 63 | 6  | 13 | 31   | M5*4*0.5P*H2.5  | 5°       | 5 |        |
| SBT40-SLD6-150-A5  | 215.4 | 150 | 123 | 27 | 8  | 8  | 6  | 22 | 63 | 6  | 13 | 33.5 | M5*4*0.5P*H2.5  | 5°       | 5 |        |
| SBT40-SLD6-200-A5  | 265.4 | 200 | 173 | 27 | 8  | 8  | 6  | 22 | 63 | 6  | 13 | 41.5 | M5*4*0.5P*H2.5  | 5°       | 5 |        |
| SBT40-SLD8-135-A5  | 200.4 | 135 | 108 | 27 | 10 | 10 | 7  | 27 | 63 | 8  | 15 | 33   | M5*4*0.5P*H2.5  | 5°       | 5 |        |
| SBT40-SLD8-150-A5  | 215.4 | 150 | 123 | 27 | 10 | 10 | 7  | 27 | 63 | 8  | 15 | 35.5 | M5*4*0.5P*H2.5  | 5°       | 5 |        |
| SBT40-SLD8-200-A5  | 265.4 | 200 | 173 | 27 | 10 | 10 | 7  | 27 | 63 | 8  | 15 | 43.5 | M5*4*0.5P*H2.5  | 5°       | 5 |        |
| SBT40-SLD10-135-A5 | 200.4 | 135 | 108 | 27 | 10 | 10 | 10 | 35 | 63 | 10 | 17 | 35   | M5*4*0.5P*H2.5  | 5°       | 5 |        |
| SBT40-SLD10-150-A5 | 215.4 | 150 | 123 | 27 | 10 | 10 | 10 | 35 | 63 | 10 | 17 | 37.5 | M5*4*0.5P*H2.5  | 5°       | 5 |        |
| SBT40-SLD10-200-A5 | 265.4 | 200 | 173 | 27 | 10 | 10 | 10 | 35 | 63 | 10 | 17 | 45.5 | M5*4*0.5P*H2.5  | 5°       | 5 |        |
| SBT40-SLD12-135-A5 | 200.4 | 135 | 108 | 27 | 10 | 10 | 10 | 45 | 63 | 12 | 22 | 40   | M6*5*0.75P*H3   | 5°       | 5 |        |
| SBT40-SLD12-150-A5 | 215.4 | 150 | 123 | 27 | 10 | 10 | 10 | 45 | 63 | 12 | 22 | 42.5 | M6*5*0.75P*H3   | 5°       | 5 |        |
| SBT40-SLD12-200-A5 | 265.4 | 200 | 173 | 27 | 10 | 10 | 10 | 45 | 63 | 12 | 22 | 50.5 | M6*5*0.75P*H3   | 5°       | 5 |        |
| SBT40-SLD6-150-A3  | 215.4 | 150 | 123 | 27 | 8  | 8  | 6  | 22 | 63 | 6  | 13 | 25.5 | M5*4*0.5P*H2.5  | 3°       | 5 |        |
| SBT40-SLD6-200-A3  | 265.4 | 200 | 173 | 27 | 8  | 8  | 6  | 22 | 63 | 6  | 13 | 30.5 | M5*4*0.5P*H2.5  | 3°       | 5 |        |
| SBT40-SLD8-150-A3  | 215.4 | 150 | 123 | 27 | 10 | 10 | 7  | 27 | 63 | 8  | 15 | 27.5 | M5*4*0.5P*H2.5  | 3°       | 5 |        |
| SBT40-SLD8-200-A3  | 265.4 | 200 | 173 | 27 | 10 | 10 | 7  | 27 | 63 | 8  | 15 | 32.5 | M5*4*0.5P*H2.5  | 3°       | 5 |        |
| SBT40-SLD10-150-A3 | 215.4 | 150 | 123 | 27 | 10 | 10 | 10 | 35 | 63 | 10 | 17 | 29.5 | M5*4*0.5P*H2.5  | 3°       | 5 |        |
| SBT40-SLD10-200-A3 | 265.4 | 200 | 173 | 27 | 10 | 10 | 10 | 35 | 63 | 10 | 17 | 34.5 | M5*4*0.5P*H2.5  | 3°       | 5 |        |

CNC TOOLS  
数控刀柄

### SLD 侧固式刀柄延长杆专用螺丝：

SLD side fixed extension rod special screw

| 规格 Model        | 使用孔径 D Using aperture |
|-----------------|-----------------------|
| M3.5×3×P0.35×T6 | D3                    |
| M4×2.8×P0.5×T8  | D4                    |
| M4×4×P0.5×T8    | D4                    |
| M5×3.5×P0.5×T10 | D6                    |
| M5×5×P0.5×T10   | D6 D8 D10             |
| M6×4×P0.75×T15  | D12                   |
| M6×6×P0.75×T15  | D12                   |
| M8×5×P0.75×L4   | D16 D20               |
| M4×2.8×P0.5×H2  | D4                    |
| M5×4×P0.5×H2.5  | D6 D8 D10             |
| M6×4×P0.75×H3   | D12                   |
| M6×5×P0.75×H3   | D12                   |



备注：梅花扳手“T”，六角扳手“H”

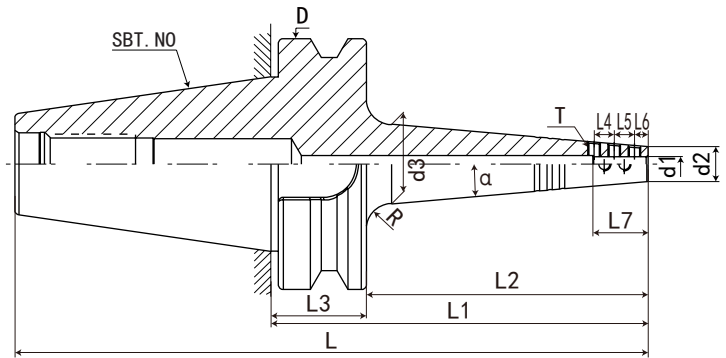
六角扳手：更大的锁紧力（需注意控制尺寸）

梅花扳手：使用更方便



## SBT50-SLD 小径侧固刀柄

## SBT50-SLD SMALL DIAMETER SIDE LOCK TOOL HOLDER



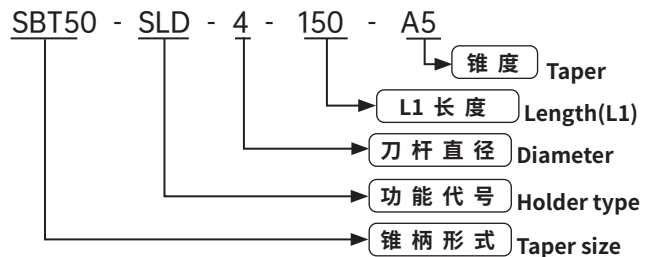
P.129

| 规格 Model           | L     | L1  | L2  | L3 | L4 | L5 | L6 | L7 | D   | d1 | d2 | d3   | T              | α  | R  | 重量 KGS |
|--------------------|-------|-----|-----|----|----|----|----|----|-----|----|----|------|----------------|----|----|--------|
| SBT50-SLD4-150-A5  | 251.8 | 150 | 112 | 38 | 7  | 7  | 6  | 20 | 100 | 4  | 12 | 30   | M4*2.8*0.5P*H2 | 5° | 10 |        |
| SBT50-SLD4-200-A5  | 301.8 | 200 | 162 | 38 | 7  | 7  | 6  | 20 | 100 | 4  | 12 | 38.5 | M4*2.8*0.5P*H2 | 5° | 10 |        |
| SBT50-SLD4-250-A5  | 351.8 | 250 | 212 | 38 | 7  | 7  | 6  | 20 | 100 | 4  | 12 | 47.5 | M4*2.8*0.5P*H2 | 5° | 10 |        |
| SBT50-SLD4-300-A5  | 401.8 | 300 | 262 | 38 | 7  | 7  | 6  | 20 | 100 | 4  | 12 | 56   | M4*2.8*0.5P*H2 | 5° | 10 |        |
| SBT50-SLD6-150-A5  | 251.8 | 150 | 112 | 38 | 8  | 8  | 6  | 22 | 100 | 6  | 14 | 32   | M5*4*0.5P*H2.5 | 5° | 10 |        |
| SBT50-SLD6-200-A5  | 301.8 | 200 | 162 | 38 | 8  | 8  | 6  | 22 | 100 | 6  | 14 | 40.5 | M5*4*0.5P*H2.5 | 5° | 10 |        |
| SBT50-SLD6-250-A5  | 351.8 | 250 | 212 | 38 | 8  | 8  | 6  | 22 | 100 | 6  | 14 | 49.5 | M5*4*0.5P*H2.5 | 5° | 10 |        |
| SBT50-SLD6-300-A5  | 401.8 | 300 | 262 | 38 | 8  | 8  | 6  | 22 | 100 | 6  | 14 | 58   | M5*4*0.5P*H2.5 | 5° | 10 |        |
| SBT50-SLD8-150-A5  | 251.8 | 150 | 112 | 38 | 10 | 10 | 7  | 27 | 100 | 8  | 16 | 34   | M5*4*0.5P*H2.5 | 5° | 10 |        |
| SBT50-SLD8-200-A5  | 301.8 | 200 | 162 | 38 | 10 | 10 | 7  | 27 | 100 | 8  | 16 | 42.5 | M5*4*0.5P*H2.5 | 5° | 10 |        |
| SBT50-SLD8-250-A5  | 351.8 | 250 | 212 | 38 | 10 | 10 | 7  | 27 | 100 | 8  | 16 | 51.5 | M5*4*0.5P*H2.5 | 5° | 10 |        |
| SBT50-SLD8-300-A5  | 401.8 | 300 | 262 | 38 | 10 | 10 | 7  | 27 | 100 | 8  | 16 | 60   | M5*4*0.5P*H2.5 | 5° | 10 |        |
| SBT50-SLD10-150-A5 | 251.8 | 150 | 112 | 38 | 10 | 10 | 10 | 35 | 100 | 10 | 18 | 36   | M5*4*0.5P*H2.5 | 5° | 10 |        |
| SBT50-SLD10-200-A5 | 301.8 | 200 | 162 | 38 | 10 | 10 | 10 | 35 | 100 | 10 | 18 | 44.5 | M5*4*0.5P*H2.5 | 5° | 10 |        |
| SBT50-SLD10-250-A5 | 351.8 | 250 | 212 | 38 | 10 | 10 | 10 | 35 | 100 | 10 | 18 | 53.5 | M5*4*0.5P*H2.5 | 5° | 10 |        |
| SBT50-SLD10-300-A5 | 401.8 | 300 | 262 | 38 | 10 | 10 | 10 | 35 | 100 | 10 | 18 | 62   | M5*4*0.5P*H2.5 | 5° | 10 |        |
| SBT50-SLD12-150-A5 | 251.8 | 150 | 112 | 38 | 10 | 10 | 10 | 45 | 100 | 12 | 22 | 40   | M6*5*0.75P*H3  | 5° | 10 |        |
| SBT50-SLD12-200-A5 | 301.8 | 200 | 162 | 38 | 10 | 10 | 10 | 45 | 100 | 12 | 22 | 48.5 | M6*5*0.75P*H3  | 5° | 10 |        |
| SBT50-SLD12-250-A5 | 351.8 | 250 | 212 | 38 | 10 | 10 | 10 | 45 | 100 | 12 | 22 | 57.5 | M6*5*0.75P*H3  | 5° | 10 |        |
| SBT50-SLD12-300-A5 | 401.8 | 300 | 262 | 38 | 10 | 10 | 10 | 45 | 100 | 12 | 22 | 66   | M6*5*0.75P*H3  | 5° | 10 |        |
| SBT50-SLD16-150-A5 | 251.8 | 150 | 112 | 38 | 12 | 12 | 10 | 50 | 100 | 16 | 26 | 44   | M8*5*0.75P*L4  | 5° | 10 |        |
| SBT50-SLD16-200-A5 | 301.8 | 200 | 162 | 38 | 12 | 12 | 10 | 50 | 100 | 16 | 26 | 52.5 | M8*5*0.75P*L4  | 5° | 10 |        |
| SBT50-SLD16-250-A5 | 351.8 | 250 | 212 | 38 | 12 | 12 | 10 | 50 | 100 | 16 | 26 | 61.5 | M8*5*0.75P*L4  | 5° | 10 |        |
| SBT50-SLD16-300-A5 | 401.8 | 300 | 262 | 38 | 12 | 12 | 10 | 50 | 100 | 16 | 26 | 70   | M8*5*0.75P*L4  | 5° | 10 |        |
| SBT50-SLD20-150-A5 | 251.8 | 150 | 112 | 38 | 12 | 12 | 10 | 55 | 100 | 20 | 30 | 48   | M8*5*0.75P*L4  | 5° | 10 |        |
| SBT50-SLD20-200-A5 | 301.8 | 200 | 162 | 38 | 12 | 12 | 10 | 55 | 100 | 20 | 30 | 56.5 | M8*5*0.75P*L4  | 5° | 10 |        |
| SBT50-SLD20-250-A5 | 351.8 | 250 | 212 | 38 | 12 | 12 | 10 | 55 | 100 | 20 | 30 | 65.5 | M8*5*0.75P*L4  | 5° | 10 |        |
| SBT50-SLD20-300-A5 | 401.8 | 300 | 262 | 38 | 12 | 12 | 10 | 55 | 100 | 20 | 30 | 74   | M8*5*0.75P*L4  | 5° | 10 |        |

### SLD 侧固式刀柄延长杆专用螺丝：

SLD side fixed extension rod special screw

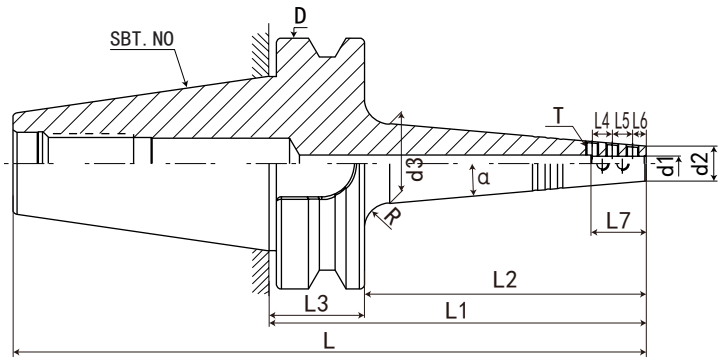
| 规格 Model        | 使用孔径 D Using aperture |
|-----------------|-----------------------|
| M3.5×3×P0.35×T6 | D3                    |
| M4×2.8×P0.5×T8  | D4                    |
| M4×4×P0.5×T8    | D4                    |
| M5×3.5×P0.5×T10 | D6                    |
| M5×5×P0.5×T10   | D6 D8 D10             |
| M6×4×P0.75×T15  | D12                   |
| M6×6×P0.75×T15  | D12                   |
| M8×5×P0.75×L4   | D16 D20               |
| M4×2.8×P0.5×H2  | D4                    |
| M5×4×P0.5×H2.5  | D6 D8 D10             |
| M6×4×P0.75×H3   | D12                   |
| M6×5×P0.75×H3   | D12                   |



备注：梅花扳手“T”，六角扳手“H”  
六角扳手：更大的锁紧力（需注意控制尺寸）  
梅花扳手：使用更方便

# SBT50-SLD 小径侧固刀柄

# SBT50-SLD SMALL DIAMETER SIDE LOCK TOOL HOLDER



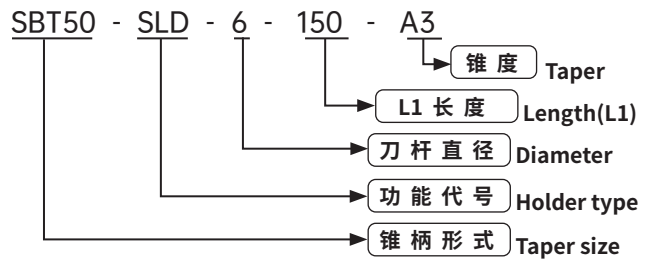
P.129

| 规格 Model           | L     | L1  | L2  | L3 | L4 | L5 | L6 | L7 | D   | d1 | d2 | d3 | T              | $\alpha$ | R  | 重量 KGS |
|--------------------|-------|-----|-----|----|----|----|----|----|-----|----|----|----|----------------|----------|----|--------|
| SBT50-SLD6-150-A3  | 251.8 | 150 | 112 | 38 | 8  | 8  | 6  | 22 | 100 | 6  | 14 | 25 | M5*4*0.5P*H2.5 | 3°       | 10 |        |
| SBT50-SLD6-200-A3  | 301.8 | 200 | 162 | 38 | 8  | 8  | 6  | 22 | 100 | 6  | 14 | 30 | M5*4*0.5P*H2.5 | 3°       | 10 |        |
| SBT50-SLD6-250-A3  | 351.8 | 250 | 212 | 38 | 8  | 8  | 6  | 22 | 100 | 6  | 14 | 35 | M5*4*0.5P*H2.5 | 3°       | 10 |        |
| SBT50-SLD6-300-A3  | 401.8 | 300 | 262 | 38 | 8  | 8  | 6  | 22 | 100 | 6  | 14 | 40 | M5*4*0.5P*H2.5 | 3°       | 10 |        |
| SBT50-SLD8-150-A3  | 251.8 | 150 | 112 | 38 | 10 | 10 | 7  | 27 | 100 | 8  | 16 | 27 | M5*4*0.5P*H2.5 | 3°       | 10 |        |
| SBT50-SLD8-200-A3  | 301.8 | 200 | 162 | 38 | 10 | 10 | 7  | 27 | 100 | 8  | 16 | 32 | M5*4*0.5P*H2.5 | 3°       | 10 |        |
| SBT50-SLD8-250-A3  | 351.8 | 250 | 212 | 38 | 10 | 10 | 7  | 27 | 100 | 8  | 16 | 37 | M5*4*0.5P*H2.5 | 3°       | 10 |        |
| SBT50-SLD8-300-A3  | 401.8 | 300 | 262 | 38 | 10 | 10 | 7  | 27 | 100 | 8  | 16 | 42 | M5*4*0.5P*H2.5 | 3°       | 10 |        |
| SBT50-SLD10-150-A3 | 251.8 | 150 | 112 | 38 | 10 | 10 | 10 | 35 | 100 | 10 | 18 | 29 | M5*4*0.5P*H2.5 | 3°       | 10 |        |
| SBT50-SLD10-200-A3 | 301.8 | 200 | 162 | 38 | 10 | 10 | 10 | 35 | 100 | 10 | 18 | 34 | M5*4*0.5P*H2.5 | 3°       | 10 |        |
| SBT50-SLD10-250-A3 | 351.8 | 250 | 212 | 38 | 10 | 10 | 10 | 35 | 100 | 10 | 18 | 39 | M5*4*0.5P*H2.5 | 3°       | 10 |        |
| SBT50-SLD10-300-A3 | 401.8 | 300 | 262 | 38 | 10 | 10 | 10 | 35 | 100 | 10 | 18 | 44 | M5*4*0.5P*H2.5 | 3°       | 10 |        |
| SBT50-SLD12-150-A3 | 251.8 | 150 | 112 | 38 | 10 | 10 | 10 | 45 | 100 | 12 | 22 | 33 | M6*5*0.75P*H3  | 3°       | 10 |        |
| SBT50-SLD12-200-A3 | 301.8 | 200 | 162 | 38 | 10 | 10 | 10 | 45 | 100 | 12 | 22 | 38 | M6*5*0.75P*H3  | 3°       | 10 |        |
| SBT50-SLD12-250-A3 | 351.8 | 250 | 212 | 38 | 10 | 10 | 10 | 45 | 100 | 12 | 22 | 43 | M6*5*0.75P*H3  | 3°       | 10 |        |
| SBT50-SLD12-300-A3 | 401.8 | 300 | 262 | 38 | 10 | 10 | 10 | 45 | 100 | 12 | 22 | 48 | M6*5*0.75P*H3  | 3°       | 10 |        |

## SLD 侧固式刀柄延长杆专用螺丝：

SLD side fixed extension rod special screw

| 规格 Model        | 使用孔径 D Using aperture |
|-----------------|-----------------------|
| M3.5×3×P0.35×T6 | D3                    |
| M4×2.8×P0.5×T8  | D4                    |
| M4×4×P0.5×T8    | D4                    |
| M5×3.5×P0.5×T10 | D6                    |
| M5×5×P0.5×T10   | D6 D8 D10             |
| M6×4×P0.75×T15  | D12                   |
| M6×6×P0.75×T15  | D12                   |
| M8×5×P0.75×L4   | D16 D20               |
| M4×2.8×P0.5×H2  | D4                    |
| M5×4×P0.5×H2.5  | D6 D8 D10             |
| M6×4×P0.75×H3   | D12                   |
| M6×5×P0.75×H3   | D12                   |



备注：梅花扳手“T”，六角扳手“H”

六角扳手：更大的锁紧力（需注意控制尺寸）

梅花扳手：使用更方便

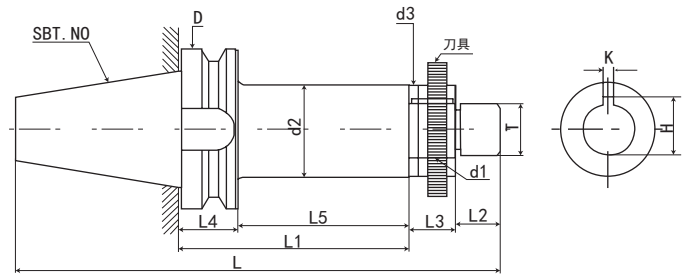
CNC TOOLS  
数控刀柄

## SBT-SCA 侧铣刀柄

## SBT-SCA SIDE CUTTER ADAPTET



P.129



| 规格 / 型号 Model   | L     | L1  | L2 | L3 | L4 | L5   | D   | d1 | d2 | d3 | k  | H    | T        | 重量 KGS |
|-----------------|-------|-----|----|----|----|------|-----|----|----|----|----|------|----------|--------|
| SBT30-SCA10-60  | 109.3 | 60  | 12 | 30 | 22 | 39   | 46  | 10 | 18 | 18 | -  | -    | M8*1.25P | 0.8    |
| SBT30-SCA16-60  | 109.3 | 60  | 16 | 30 | 22 | 39   | 46  | 16 | 26 | 26 | 4  | 17.7 | M14*1.5P | 1      |
| SBT30-SCA22-60  | 109.3 | 60  | 22 | 30 | 22 | 39   | 46  | 22 | 34 | 34 | 6  | 24.3 | M20*1.5P | 1.2    |
| SBT30-SCA27-75  | 124.3 | 75  | 28 | 30 | 22 | 54   | 46  | 27 | 41 | 41 | 7  | 30   | M24*1.5P | 1.4    |
| SBT40-SCA16-60  | 172.4 | 60  | 16 | 30 | 27 | 34   | 63  | 16 | 26 | 26 | 4  | 17.7 | M14*1.5P | 1.5    |
| SBT40-SCA22-75  | 193.4 | 75  | 22 | 30 | 27 | 49   | 63  | 22 | 34 | 34 | 6  | 24.3 | M20*1.5P | 1.6    |
| SBT40-SCA22-120 | 238.4 | 120 | 22 | 30 | 27 | 94   | 63  | 22 | 34 | 34 | 6  | 24.3 | M20*1.5P | 1.7    |
| SBT40-SCA27-75  | 199.4 | 75  | 28 | 30 | 27 | 49   | 63  | 27 | 41 | 41 | 7  | 30   | M24*1.5P | 2      |
| SBT40-SCA27-120 | 244.4 | 120 | 28 | 30 | 27 | 94   | 63  | 27 | 41 | 41 | 7  | 30   | M24*1.5P | 2.1    |
| SBT40-SCA32-90  | 218.4 | 90  | 32 | 30 | 27 | 64   | 63  | 32 | 47 | 47 | 8  | 35   | M30*1.5P | 2.5    |
| SBT40-SCA32-180 | 308.4 | 180 | 32 | 30 | 27 | 154  | 63  | 32 | 47 | 47 | 8  | 35   | M30*1.5P | 2.6    |
| SBT50-SCA22-90  | 245.3 | 90  | 22 | 30 | 38 | 53.5 | 100 | 22 | 34 | 34 | 6  | 24.3 | M20*1.5P | 1.7    |
| SBT50-SCA22-135 | 290.3 | 135 | 22 | 30 | 38 | 98.5 | 100 | 22 | 34 | 34 | 6  | 24.3 | M20*1.5P | 2      |
| SBT50-SCA27-90  | 251.3 | 90  | 28 | 30 | 38 | 53.5 | 100 | 27 | 41 | 41 | 7  | 30   | M24*1.5P | 2      |
| SBT50-SCA27-135 | 296.3 | 135 | 28 | 30 | 38 | 98.5 | 100 | 27 | 41 | 41 | 7  | 30   | M24*1.5P | 2.4    |
| SBT50-SCA32-90  | 255.3 | 90  | 32 | 30 | 38 | 53.5 | 100 | 32 | 47 | 47 | 8  | 35   | M30*1.5P | 2.6    |
| SBT50-SCA32-135 | 300.3 | 135 | 32 | 30 | 38 | 98.5 | 100 | 32 | 47 | 47 | 8  | 35   | M30*1.5P | 4.4    |
| SBT50-SCA40-90  | 263.3 | 90  | 40 | 30 | 38 | 53.5 | 100 | 40 | 55 | 55 | 10 | 43.7 | M36*2.0P | 4.7    |
| SBT50-SCA40-135 | 308.3 | 135 | 40 | 30 | 38 | 98.5 | 100 | 40 | 55 | 55 | 10 | 43.7 | M36*2.0P | 5      |

### 特点:

注:

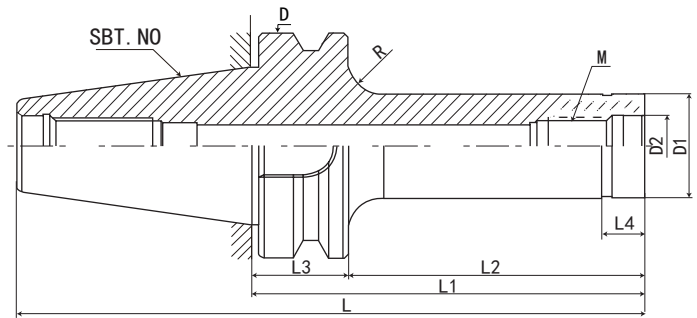
- ◎ 割槽刀，三面刃铣刀等使用时，为使用刀具与刀杆紧密接触，请调整垫片
- ◎ 选购刀柄，根据加工需要请确认装锯片卡位大小。不附带拉钉
- ◎ 拉钉须另行购买

### Features:

- ◎ Shears the trough knife, when uses and so on three edge milling cutters, is uses the cutting tool and the cutter bar contacts closely, requests transfer the entire filling piece.
- ◎ Selects and purchases the hilt, according to the processing needs please to confirm that installs the saw blade jamming size. Does not supplement the puller bolt to select.
- ◎ The pull stud must purchase alone.

# SBT-M 螺纹连接刀柄 (直柄)

# SBT-M THERADED CHUCK



P-I29



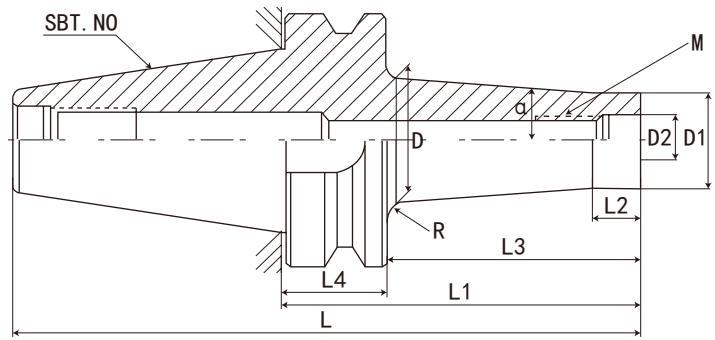
P-M21

| 规格 Model      | L     | L1  | L2 | L3 | L4 | D   | D1   | D2   | M         | R  | 重量 KGS |
|---------------|-------|-----|----|----|----|-----|------|------|-----------|----|--------|
| SBT30-M08-60  | 108.4 | 60  | 38 | 22 | 12 | 46  | 15.4 | 8.5  | M8*1.25P  | 4  |        |
| SBT30-M08-90  | 138.4 | 90  | 68 | 22 | 12 | 46  | 15.4 | 8.5  | M8*1.25P  | 4  | 0.5    |
| SBT30-M08-110 | 158.4 | 110 | 88 | 22 | 12 | 46  | 15.4 | 8.5  | M8*1.25P  | 4  |        |
| SBT30-M10-60  | 108.4 | 60  | 38 | 22 | 12 | 46  | 19   | 10.5 | M10*1.5P  | 4  |        |
| SBT30-M10-90  | 138.4 | 90  | 68 | 22 | 12 | 46  | 19   | 10.5 | M10*1.5P  | 4  | 0.5    |
| SBT30-M10-110 | 158.4 | 110 | 88 | 22 | 12 | 46  | 19   | 10.5 | M10*1.5P  | 4  |        |
| SBT30-M12-60  | 108.4 | 60  | 38 | 22 | 12 | 46  | 24   | 12.5 | M12*1.75P | 4  |        |
| SBT30-M12-90  | 138.4 | 90  | 68 | 22 | 12 | 46  | 24   | 12.5 | M12*1.75P | 4  | 0.6    |
| SBT30-M12-110 | 158.4 | 110 | 88 | 22 | 12 | 46  | 24   | 12.5 | M12*1.75P | 4  |        |
| SBT30-M16-60  | 108.4 | 60  | 38 | 22 | 12 | 46  | 29   | 17   | M16*2.0P  | 4  |        |
| SBT30-M16-90  | 138.4 | 90  | 68 | 22 | 12 | 46  | 29   | 17   | M16*2.0P  | 4  | 0.7    |
| SBT30-M16-110 | 158.4 | 110 | 88 | 22 | 12 | 46  | 29   | 17   | M16*2.0P  | 4  |        |
| SBT40-M08-60  | 125.4 | 60  | 33 | 27 | 12 | 63  | 15.4 | 8.5  | M8*1.25P  | 10 | 1.1    |
| SBT40-M08-90  | 155.4 | 90  | 63 | 27 | 12 | 63  | 15.4 | 8.5  | M8*1.25P  | 10 | 1.2    |
| SBT40-M08-110 | 175.4 | 110 | 83 | 27 | 12 | 63  | 15.4 | 8.5  | M8*1.25P  | 10 | 1.2    |
| SBT40-M10-60  | 125.4 | 60  | 33 | 27 | 12 | 63  | 19   | 10.5 | M10*1.5P  | 10 | 1.1    |
| SBT40-M10-90  | 155.4 | 90  | 63 | 27 | 12 | 63  | 19   | 10.5 | M10*1.5P  | 10 | 1.1    |
| SBT40-M10-110 | 175.4 | 110 | 83 | 27 | 12 | 63  | 19   | 10.5 | M10*1.5P  | 10 | 1.2    |
| SBT40-M12-60  | 125.4 | 60  | 33 | 27 | 12 | 63  | 24   | 12.5 | M12*1.75P | 10 | 1.2    |
| SBT40-M12-90  | 155.4 | 90  | 63 | 27 | 12 | 63  | 24   | 12.5 | M12*1.75P | 10 | 1.3    |
| SBT40-M12-110 | 175.4 | 110 | 83 | 27 | 12 | 63  | 24   | 12.5 | M12*1.75P | 10 | 1.3    |
| SBT40-M16-60  | 125.4 | 60  | 33 | 27 | 12 | 63  | 29   | 17   | M16*2.0P  | 10 | 1.2    |
| SBT40-M16-90  | 155.4 | 90  | 63 | 27 | 12 | 63  | 29   | 17   | M16*2.0P  | 10 | 1.3    |
| SBT40-M16-110 | 175.4 | 110 | 83 | 27 | 12 | 63  | 29   | 17   | M16*2.0P  | 10 | 1.4    |
| SBT50-M08-60  | 161.8 | 60  | 22 | 38 | 12 | 100 | 15.4 | 8.5  | M8*1.25P  | 10 |        |
| SBT50-M08-90  | 191.8 | 90  | 52 | 38 | 12 | 100 | 15.4 | 8.5  | M8*1.25P  | 10 | 3.8    |
| SBT50-M08-110 | 211.8 | 110 | 72 | 38 | 12 | 100 | 15.4 | 8.5  | M8*1.25P  | 10 | 3.8    |
| SBT50-M10-60  | 161.8 | 60  | 22 | 38 | 12 | 100 | 19   | 10.5 | M10*1.5P  | 10 |        |
| SBT50-M10-90  | 191.8 | 90  | 52 | 38 | 12 | 100 | 19   | 10.5 | M10*1.5P  | 10 | 3.8    |
| SBT50-M10-110 | 211.8 | 110 | 72 | 38 | 12 | 100 | 19   | 10.5 | M10*1.5P  | 10 | 3.8    |
| SBT50-M12-60  | 161.8 | 60  | 22 | 38 | 12 | 100 | 24   | 12.5 | M12*1.75P | 10 |        |
| SBT50-M12-90  | 191.8 | 90  | 52 | 38 | 12 | 100 | 24   | 12.5 | M12*1.75P | 10 | 3.9    |
| SBT50-M12-110 | 211.8 | 110 | 72 | 38 | 12 | 100 | 24   | 12.5 | M12*1.75P | 10 | 3.9    |
| SBT50-M16-60  | 161.8 | 60  | 22 | 38 | 12 | 100 | 29   | 17   | M16*2.0P  | 10 | 3.9    |
| SBT50-M16-90  | 191.8 | 90  | 52 | 38 | 12 | 100 | 29   | 17   | M16*2.0P  | 10 | 3.9    |
| SBT50-M16-110 | 211.8 | 110 | 72 | 38 | 12 | 100 | 29   | 17   | M16*2.0P  | 10 | 3.9    |

CNC TOOLS  
数控刀柄

## SBT-M 螺纹连接刀柄 (斜柄)

## SBT-M THERADED CHUCK



P. I29

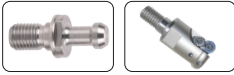
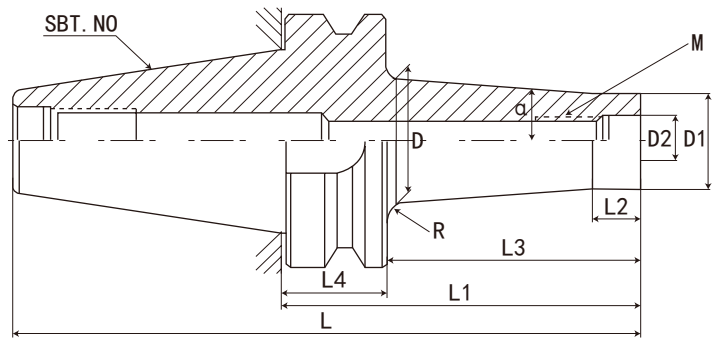


P. M21

| 规格 Model         | L     | L1  | L2 | L3  | L4 | D    | D1   | D2   | M         | $\alpha$ | R | 重量 KGS |
|------------------|-------|-----|----|-----|----|------|------|------|-----------|----------|---|--------|
| SBT30-M08-60-A5  | 109.3 | 60  | 12 | 39  | 22 | 19.5 | 15.4 | 8.5  | M8*1.25P  | 5°       | 4 |        |
| SBT30-M08-90-A5  | 139.3 | 90  | 12 | 69  | 22 | 24.5 | 15.4 | 8.5  | M8*1.25P  | 5°       | 4 |        |
| SBT30-M10-60-A4  | 109.3 | 60  | 12 | 39  | 22 | 22   | 19   | 10.5 | M10*1.5P  | 4°       | 4 |        |
| SBT30-M10-90-A4  | 139.3 | 90  | 12 | 69  | 22 | 26   | 19   | 10.5 | M10*1.5P  | 4°       | 4 |        |
| SBT30-M12-60-A4  | 109.3 | 60  | 12 | 39  | 22 | 27   | 24   | 12.5 | M12*1.75P | 4°       | 4 |        |
| SBT30-M12-90-A4  | 139.3 | 90  | 12 | 69  | 22 | 31.5 | 24   | 12.5 | M12*1.75P | 4°       | 2 |        |
| SBT30-M16-60-A4  | 109.3 | 60  | 12 | 39  | 22 | 32.5 | 29   | 17   | M16*2.0P  | 4°       | 2 |        |
| SBT30-M16-90-A4  | 139.3 | 90  | 12 | 69  | 22 | 36.5 | 29   | 17   | M16*2.0P  | 4°       | 2 |        |
| SBT40-M08-60-A5  | 126.4 | 60  | 12 | 34  | 27 | 18   | 15.4 | 8.5  | M8*1.25P  | 5°       | 5 |        |
| SBT40-M08-90-A5  | 156.4 | 90  | 12 | 64  | 27 | 23.5 | 15.4 | 8.5  | M8*1.25P  | 5°       | 5 |        |
| SBT40-M08-110-A5 | 176.4 | 110 | 12 | 84  | 27 | 27   | 15.4 | 8.5  | M8*1.25P  | 5°       | 5 |        |
| SBT40-M08-150-A5 | 216.4 | 150 | 12 | 124 | 27 | 34   | 15.4 | 8.5  | M8*1.25P  | 5°       | 5 |        |
| SBT40-M08-200-A5 | 266.4 | 200 | 12 | 174 | 27 | 42.5 | 15.4 | 8.5  | M8*1.25P  | 5°       | 5 |        |
| SBT40-M10-60-A4  | 126.4 | 60  | 12 | 34  | 27 | 21.5 | 19   | 10.5 | M10*1.5P  | 4°       | 5 |        |
| SBT40-M10-90-A4  | 156.4 | 90  | 12 | 64  | 27 | 25.5 | 19   | 10.5 | M10*1.5P  | 4°       | 5 |        |
| SBT40-M10-110-A4 | 176.4 | 110 | 12 | 84  | 27 | 28.5 | 19   | 10.5 | M10*1.5P  | 4°       | 5 |        |
| SBT40-M10-150-A4 | 216.4 | 150 | 12 | 124 | 27 | 34   | 19   | 10.5 | M10*1.5P  | 4°       | 5 |        |
| SBT40-M10-200-A4 | 266.4 | 200 | 12 | 174 | 27 | 41   | 19   | 10.5 | M10*1.5P  | 4°       | 5 |        |
| SBT40-M12-60-A4  | 126.4 | 60  | 12 | 34  | 27 | 25.5 | 23   | 12.5 | M12*1.75P | 4°       | 5 |        |
| SBT40-M12-90-A4  | 156.4 | 90  | 12 | 64  | 27 | 29.5 | 23   | 12.5 | M12*1.75P | 4°       | 5 |        |
| SBT40-M12-110-A4 | 176.4 | 110 | 12 | 84  | 27 | 32.5 | 23   | 12.5 | M12*1.75P | 4°       | 5 |        |
| SBT40-M12-135-A4 | 201.4 | 135 | 12 | 109 | 27 | 36   | 23   | 12.5 | M12*1.75P | 4°       | 5 |        |
| SBT40-M12-150-A4 | 216.4 | 150 | 12 | 124 | 27 | 38   | 23   | 12.5 | M12*1.75P | 4°       | 5 |        |
| SBT40-M12-200-A4 | 266.4 | 200 | 12 | 174 | 27 | 45   | 23   | 12.5 | M12*1.75P | 4°       | 5 |        |
| SBT40-M16-60-A4  | 126.4 | 60  | 12 | 34  | 27 | 31   | 28.8 | 17   | M16*2.0P  | 4°       | 5 |        |
| SBT40-M16-90-A4  | 156.4 | 90  | 12 | 64  | 27 | 35.5 | 28.8 | 17   | M16*2.0P  | 4°       | 5 |        |
| SBT40-M16-110-A4 | 176.4 | 110 | 12 | 84  | 27 | 38   | 28.8 | 17   | M16*2.0P  | 4°       | 5 |        |
| SBT40-M16-135-A4 | 201.4 | 135 | 12 | 109 | 27 | 41.5 | 28.8 | 17   | M16*2.0P  | 4°       | 5 |        |
| SBT40-M16-150-A4 | 216.4 | 150 | 12 | 124 | 27 | 43.5 | 28.8 | 17   | M16*2.0P  | 4°       | 5 |        |
| SBT40-M16-200-A4 | 266.4 | 200 | 12 | 174 | 27 | 50.5 | 28.8 | 17   | M16*2.0P  | 4°       | 5 |        |

## SBT50-M 螺纹连接刀柄 (斜柄)

## SBT50-M THERADED CHUCK



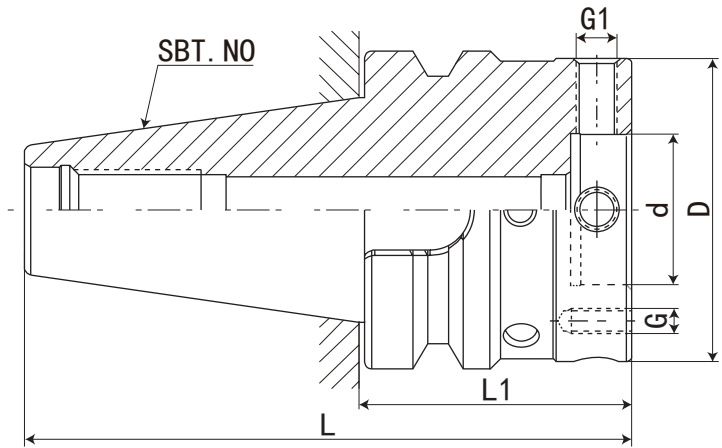
P.129 P.M21

| 规格 Model         | L     | L1  | L2 | L3    | L4 | D    | D1   | D2   | M         | $\alpha$ | R  | 重量 KGS |
|------------------|-------|-----|----|-------|----|------|------|------|-----------|----------|----|--------|
| SBT50-M08-60-A5  | 163.3 | 60  | 12 | 23.5  | 38 | 17.5 | 15.4 | 8.5  | M8*1.25P  | 5°       | 10 |        |
| SBT50-M08-90-A5  | 193.3 | 90  | 12 | 53.5  | 38 | 20.5 | 15.4 | 8.5  | M8*1.25P  | 5°       | 10 |        |
| SBT50-M08-110-A5 | 213.3 | 110 | 12 | 73.5  | 38 | 24   | 15.4 | 8.5  | M8*1.25P  | 5°       | 10 |        |
| SBT50-M08-150-A5 | 253.3 | 150 | 12 | 113.5 | 38 | 31   | 15.4 | 8.5  | M8*1.25P  | 5°       | 10 |        |
| SBT50-M08-200-A5 | 303.3 | 200 | 12 | 163.5 | 38 | 40   | 15.4 | 8.5  | M8*1.25P  | 5°       | 10 | 5      |
| SBT50-M08-250-A5 | 353.3 | 250 | 12 | 213.5 | 38 | 48.5 | 15.4 | 8.5  | M8*1.25P  | 5°       | 10 |        |
| SBT50-M08-300-A5 | 403.3 | 300 | 12 | 263.5 | 38 | 57.5 | 15.4 | 8.5  | M8*1.25P  | 5°       | 10 |        |
| SBT50-M10-60-A4  | 163.3 | 60  | 12 | 23.5  | 38 | 20.5 | 19   | 10.5 | M10*1.5P  | 4°       | 10 |        |
| SBT50-M10-90-A4  | 193.3 | 90  | 12 | 53.5  | 38 | 23   | 19   | 10.5 | M10*1.5P  | 4°       | 10 |        |
| SBT50-M10-110-A4 | 213.3 | 110 | 12 | 73.5  | 38 | 26   | 19   | 10.5 | M10*1.5P  | 4°       | 10 | 4      |
| SBT50-M10-150-A4 | 253.3 | 150 | 12 | 113.5 | 38 | 31.5 | 19   | 10.5 | M10*1.5P  | 4°       | 10 |        |
| SBT50-M10-200-A4 | 303.3 | 200 | 12 | 163.5 | 38 | 38.5 | 19   | 10.5 | M10*1.5P  | 4°       | 10 |        |
| SBT50-M10-250-A4 | 353.3 | 250 | 12 | 213.5 | 38 | 45.5 | 19   | 10.5 | M10*1.5P  | 4°       | 10 |        |
| SBT50-M10-300-A4 | 403.3 | 300 | 12 | 263.5 | 38 | 52.5 | 19   | 10.5 | M10*1.5P  | 4°       | 10 | 6.4    |
| SBT50-M12-60-A4  | 163.3 | 60  | 12 | 23.5  | 38 | 25.5 | 24   | 12.5 | M12*1.75P | 4°       | 10 |        |
| SBT50-M12-90-A4  | 193.3 | 90  | 12 | 53.5  | 38 | 28   | 24   | 12.5 | M12*1.75P | 4°       | 10 |        |
| SBT50-M12-110-A4 | 213.3 | 110 | 12 | 73.5  | 38 | 31   | 24   | 12.5 | M12*1.75P | 4°       | 10 |        |
| SBT50-M12-135-A4 | 238.3 | 135 | 12 | 98.5  | 38 | 34.5 | 24   | 12.5 | M12*1.75P | 4°       | 10 |        |
| SBT50-M12-150-A4 | 253.3 | 150 | 12 | 113.5 | 38 | 36.5 | 24   | 12.5 | M12*1.75P | 4°       | 10 |        |
| SBT50-M12-200-A4 | 303.3 | 200 | 12 | 163.5 | 38 | 43.5 | 24   | 12.5 | M12*1.75P | 4°       | 10 |        |
| SBT50-M12-250-A4 | 353.3 | 250 | 12 | 213.5 | 38 | 50.5 | 24   | 12.5 | M12*1.75P | 4°       | 10 |        |
| SBT50-M12-300-A4 | 403.3 | 300 | 12 | 263.5 | 38 | 57.5 | 24   | 12.5 | M12*1.75P | 4°       | 10 |        |
| SBT50-M16-60-A4  | 163.3 | 60  | 12 | 23.5  | 38 | 30.5 | 29   | 17   | M16*2.0P  | 4°       | 10 |        |
| SBT50-M16-90-A4  | 193.3 | 90  | 12 | 53.5  | 38 | 33   | 29   | 17   | M16*2.0P  | 4°       | 10 |        |
| SBT50-M16-110-A4 | 213.3 | 110 | 12 | 73.5  | 38 | 36   | 29   | 17   | M16*2.0P  | 4°       | 10 |        |
| SBT50-M16-135-A4 | 238.3 | 135 | 12 | 98.5  | 38 | 39.5 | 29   | 17   | M16*2.0P  | 4°       | 10 |        |
| SBT50-M16-150-A4 | 253.3 | 150 | 12 | 113.5 | 38 | 41.5 | 29   | 17   | M16*2.0P  | 4°       | 10 | 4.8    |
| SBT50-M16-200-A4 | 303.3 | 200 | 12 | 163.5 | 38 | 48.5 | 29   | 17   | M16*2.0P  | 4°       | 10 | 5.5    |
| SBT50-M16-250-A4 | 353.3 | 250 | 12 | 213.5 | 38 | 55.5 | 29   | 17   | M16*2.0P  | 4°       | 10 |        |
| SBT50-M16-300-A4 | 403.3 | 300 | 12 | 263.5 | 38 | 62.5 | 29   | 17   | M16*2.0P  | 4°       | 10 |        |



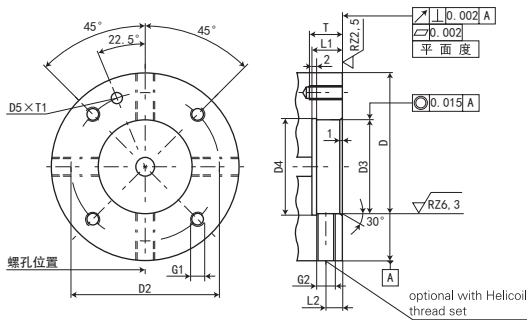
## SBT-MOD 模块刀柄

## SBT-MOD MODULAR TOOL HOLDER



P.129

| 规格 Model         | L     | L1 | D   | d  | G1       | G        | 重量 KGS |
|------------------|-------|----|-----|----|----------|----------|--------|
| SBT30-MOD060-040 | 88.4  | 40 | 60  | 30 | M8*1.0P  | M5*0.8P  | 0.7    |
| SBT30-MOD070-040 | 88.4  | 40 | 70  | 35 | M8*1.0P  | M6*1.0P  | 0.8    |
| SBT40-MOD060-055 | 120.4 | 55 | 60  | 30 | M8*1.0P  | M5*0.8P  | 1.5    |
| SBT40-MOD070-055 | 120.4 | 55 | 70  | 35 | M8*1.0P  | M6*1.0P  | 1.6    |
| SBT40-MOD080-065 | 130.4 | 65 | 80  | 40 | M8*1.0P  | M6*1.0P  | 2      |
| SBT40-MOD100-070 | 135.4 | 70 | 100 | 50 | M10*1.0P | M8*1.25P | 2.6    |
| SBT45-MOD060-065 | 147.8 | 65 | 60  | 30 | M8*1.0P  | M5*0.8P  | 3      |
| SBT45-MOD070-065 | 147.8 | 65 | 70  | 35 | M8*1.0P  | M6*1.0P  | 3.1    |
| SBT45-MOD080-065 | 147.8 | 65 | 80  | 40 | M8*1.0P  | M6*1.0P  | 3.3    |
| SBT45-MOD100-075 | 157.8 | 75 | 100 | 50 | M10*1.0P | M8*1.25P | 3.5    |
| SBT45-MOD117-075 | 157.8 | 75 | 117 | 60 | M10*1.0P | M8*1.25P | 4.4    |
| SBT50-MOD060-070 | 171.8 | 70 | 60  | 30 | M8*1.0P  | M5*0.8P  | 4.8    |
| SBT50-MOD070-070 | 171.8 | 70 | 70  | 35 | M8*1.0P  | M6*1.0P  | 4.9    |
| SBT50-MOD080-070 | 171.8 | 70 | 80  | 40 | M8*1.0P  | M6*1.0P  | 5.1    |
| SBT50-MOD100-070 | 171.8 | 70 | 100 | 50 | M10*1.0P | M8*1.25P | 5.3    |
| SBT50-MOD117-080 | 181.8 | 80 | 117 | 60 | M10*1.0P | M8*1.25P | 6.3    |
| SBT50-MOD140-080 | 181.8 | 80 | 140 | 80 | M10*1.0P | M8*1.25P | 6.6    |

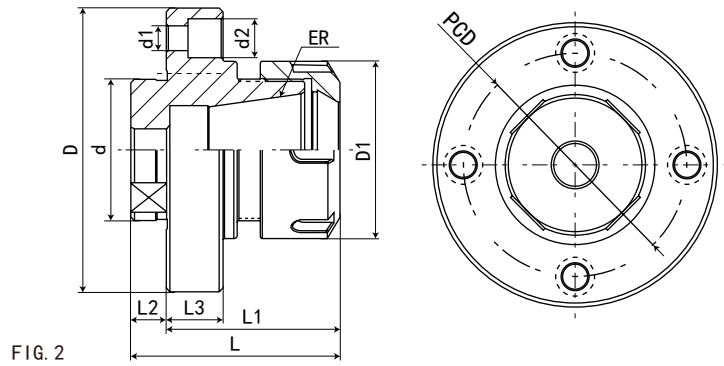
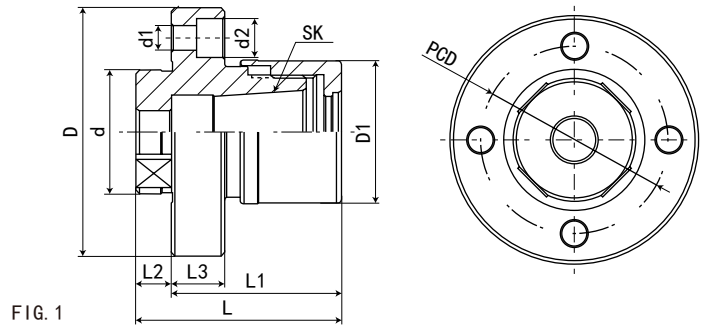


| Nominal size      | 32   | 40   | 50   | 63    | 80    | 100   | 125   | 160   |
|-------------------|------|------|------|-------|-------|-------|-------|-------|
| module diameter D | 60   | 70   | 80   | 100   | 117   | 140   | 180   | 210   |
| D2+/-0.1          | 44   | 53   | 63   | 79    | 96    | 119   | 150   | 185   |
| D3F8              | 30   | 35   | 40   | 50    | 60    | 80    | 100   | 120   |
| D4                | 31   | 36   | 41   | 51    | 61    | 81    | 101   | 121   |
| D5                | 4.5  | 5    | 5    | 5     | 6     | 6     | 6     | 6     |
| L1                | 12   | 12   | 12   | 14    | 14    | 14    | 24    | 37    |
| L2                | 7    | 7    | 7    | 8     | 8     | 8     | 8     | 8     |
| G1                | M5   | M6   | M6   | M8    | M8    | M10   | M12   | M12   |
| G2                | M8*1 | M8*1 | M8*1 | M10*1 | M10*1 | M10*1 | M10*1 | M10*1 |
| T                 | 11   | 14   | 14   | 15    | 15    | 18    | 25    | 25    |
| T1+0.5            | 3    | 3.5  | 3.5  | 3.5   | 4.5   | 4.5   | 4.5   | 4.5   |

数控刀柄  
CNC TOOLS

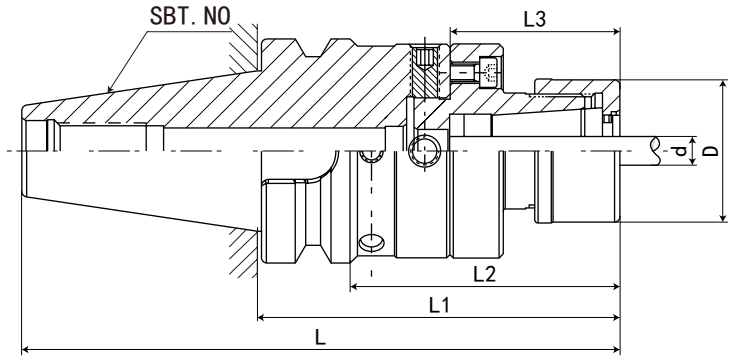
# MOD 法兰盘

## MOD FLANGE PLATE



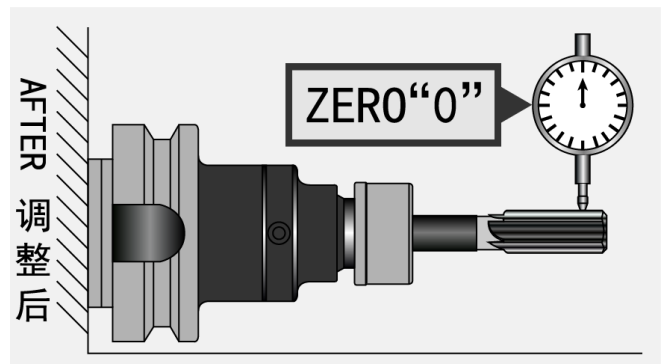
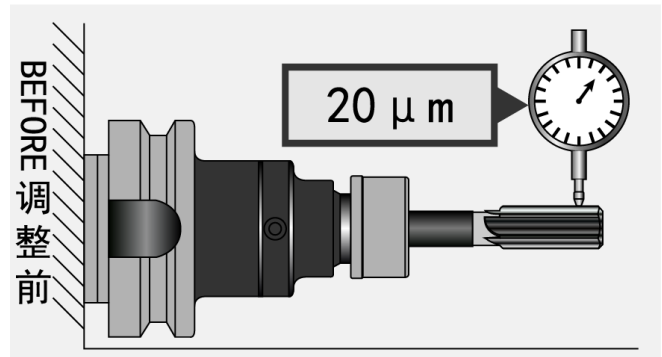
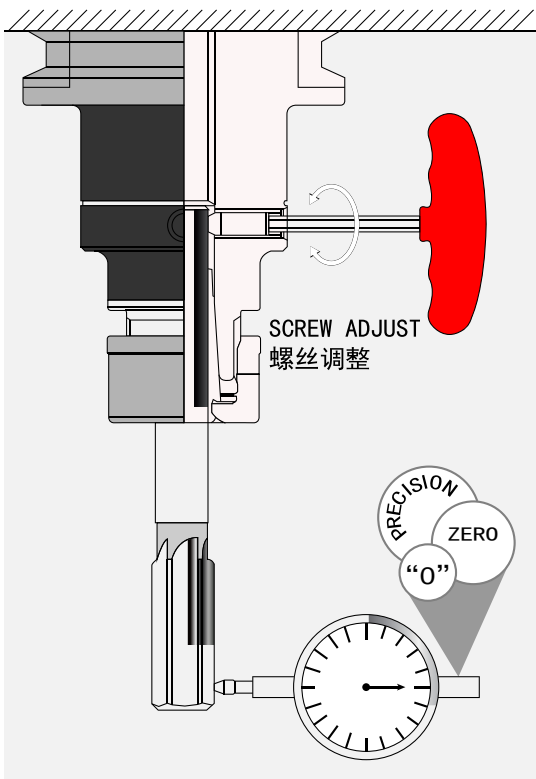
| 规格 Model        | D   | D1 | d  | d1 | d2 | L  | L1 | L2 | L3 | PCD | FIG | 重量 KGS |
|-----------------|-----|----|----|----|----|----|----|----|----|-----|-----|--------|
| MOD060-GSK16-48 | 60  | 40 | 30 | 6  | 9  | 58 | 48 | 10 | 15 | 44  | 1   |        |
| MOD070-GSK16-48 | 70  | 40 | 35 | 7  | 11 | 58 | 48 | 10 | 15 | 53  | 1   |        |
| MOD080-GSK16-49 | 80  | 40 | 40 | 7  | 11 | 59 | 49 | 10 | 16 | 63  | 1   |        |
| MOD080-ER32-49  | 80  | 50 | 40 | 7  | 11 | 59 | 49 | 10 | 16 | 63  | 2   |        |
| MOD100-ER40-63  | 100 | 63 | 50 | 9  | 14 | 75 | 63 | 12 | 18 | 79  | 2   |        |

## SBT-MOD 可调精度刀柄 (铰刀专用) SBT-MOD ADJUSTABLE CHUCK (REAMER USING)



P.129

| 规格 Model               | L     | L1  | L2  | L3 | D  | d 夹持范围 Range | 弹性筒夹 Collets |
|------------------------|-------|-----|-----|----|----|--------------|--------------|
| SBT30-MOD060-GSK16-88  | 136.4 | 88  | 66  | 48 | 40 | 3-16mm       | GSK16        |
| SBT30-MOD070-GSK16-88  | 136.4 | 88  | 66  | 48 | 40 | 3-16mm       | GSK16        |
| SBT40-MOD060-GSK16-103 | 168.4 | 103 | 76  | 48 | 40 | 3-16mm       | GSK16        |
| SBT40-MOD070-GSK16-103 | 168.4 | 103 | 76  | 48 | 40 | 3-16mm       | GSK16        |
| SBT40-MOD080-ER32-114  | 179.4 | 114 | 87  | 49 | 50 | 2-20mm       | ER32         |
| SBT40-MOD080-GSK16-114 | 179.4 | 114 | 87  | 49 | 40 | 3-16mm       | GSK16        |
| SBT40-MOD100-ER40-133  | 198.4 | 133 | 106 | 63 | 63 | 2-26mm       | ER40         |
| SBT50-MOD060-GSK16-118 | 219.8 | 118 | 80  | 48 | 40 | 3-16mm       | GSK16        |
| SBT50-MOD070-GSK16-118 | 219.8 | 118 | 80  | 48 | 40 | 3-16mm       | GSK16        |
| SBT50-MOD080-ER32-119  | 220.8 | 119 | 81  | 49 | 50 | 2-20mm       | ER32         |
| SBT50-MOD080-GSK16-119 | 220.8 | 119 | 81  | 49 | 40 | 3-16mm       | GSK16        |
| SBT50-MOD100-ER40-133  | 134.8 | 133 | 95  | 63 | 63 | 2-26mm       | ER40         |



### 特点:

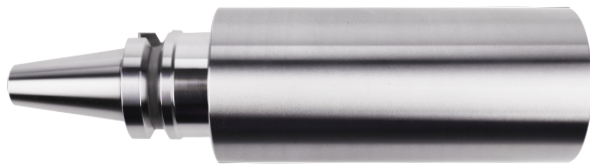
- ◎ 刀尖位置可调至“0”位置
- ◎ 机械主轴、夹头、刀具的累计误差值可一次调整修正

### Features:

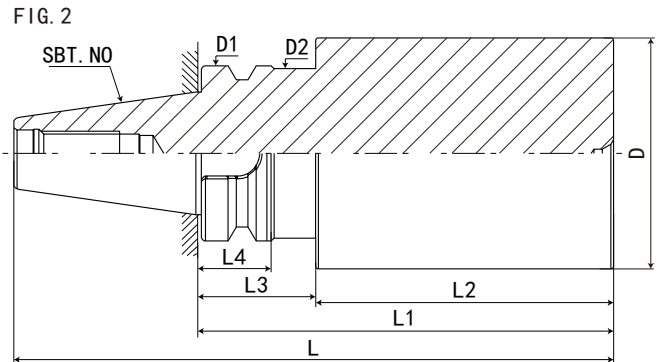
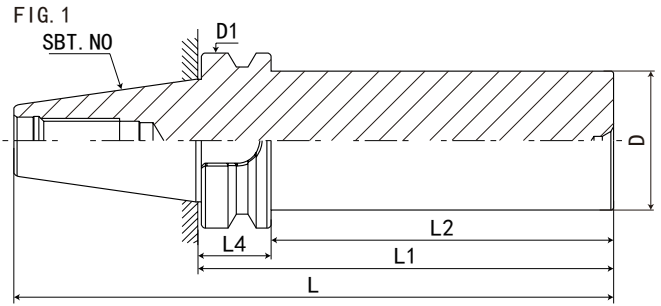
- ◎ The tool tip position can be adjusted as “0” position.
- ◎ The accumulated error value of the spindle, the chuck, and the tool can all be adjusted and corrected at the same time.

# SBT30- 基础柄刀柄

## SBT30 SEMI-FINISHED TOOL HOLDER



P.129



| 规格 Model       | L     | L1  | L2  | L3 | L4 | D   | D1  | D2 | FIG | 重量 KGS |
|----------------|-------|-----|-----|----|----|-----|-----|----|-----|--------|
| SBT30-D50-100  | 148.4 | 100 | 68  | 32 | 22 | 50  | 46  | 44 | 2   |        |
| SBT30-D50-125  | 173.4 | 125 | 93  | 32 | 22 | 50  | 46  | 44 | 2   |        |
| SBT30-D50-150  | 198.4 | 150 | 118 | 32 | 22 | 50  | 46  | 44 | 2   |        |
| SBT30-D63-100  | 148.4 | 100 | 68  | 32 | 22 | 63  | 46  | 44 | 2   |        |
| SBT30-D63-125  | 173.4 | 125 | 93  | 32 | 22 | 63  | 46  | 44 | 2   |        |
| SBT30-D63-150  | 198.4 | 150 | 118 | 32 | 22 | 63  | 46  | 44 | 2   |        |
| SBT30-D83-100  | 148.4 | 100 | 68  | 32 | 22 | 83  | 46  | 44 | 2   |        |
| SBT30-D83-125  | 173.4 | 125 | 93  | 32 | 22 | 83  | 46  | 44 | 2   |        |
| SBT30-D102-125 | 173.4 | 125 | 93  | 32 | 22 | 102 | 46  | 44 | 2   |        |
| SBT40-D50-100  | 165.4 | 100 | 73  | -  | 27 | 50  | 63  | -  | 1   |        |
| SBT40-D50-150  | 215.4 | 150 | 123 | -  | 27 | 50  | 63  | -  | 1   |        |
| SBT40-D50-200  | 265.4 | 200 | 173 | -  | 27 | 50  | 63  | -  | 1   |        |
| SBT40-D63-100  | 165.4 | 100 | 63  | 37 | 27 | 63  | 63  | 61 | 2   |        |
| SBT40-D63-150  | 215.4 | 150 | 113 | 37 | 27 | 63  | 63  | 61 | 2   |        |
| SBT40-D63-200  | 265.4 | 200 | 163 | 37 | 27 | 63  | 63  | 61 | 2   |        |
| SBT40-D63-250  | 315.4 | 250 | 213 | 37 | 27 | 63  | 63  | 61 | 2   |        |
| SBT40-D83-100  | 165.4 | 100 | 63  | 37 | 27 | 83  | 63  | 61 | 2   |        |
| SBT40-D83-150  | 215.4 | 150 | 113 | 37 | 27 | 83  | 63  | 61 | 2   |        |
| SBT40-D83-200  | 265.4 | 200 | 163 | 37 | 27 | 83  | 63  | 61 | 2   |        |
| SBT40-D83-250  | 315.4 | 250 | 213 | 37 | 27 | 83  | 63  | 61 | 2   |        |
| SBT40-D102-150 | 215.4 | 150 | 113 | 37 | 27 | 102 | 63  | 61 | 2   |        |
| SBT50-D102-100 | 201.8 | 100 | 52  | 48 | 38 | 102 | 100 | 98 | 2   |        |
| SBT50-D102-150 | 251.8 | 150 | 102 | 48 | 38 | 102 | 100 | 98 | 2   |        |
| SBT50-D102-200 | 301.8 | 200 | 152 | 48 | 38 | 102 | 100 | 98 | 2   |        |
| SBT50-D102-250 | 351.8 | 250 | 202 | 48 | 38 | 102 | 100 | 98 | 2   |        |
| SBT50-D102-300 | 401.8 | 300 | 252 | 48 | 38 | 102 | 100 | 98 | 2   |        |
| SBT50-D127-150 | 251.8 | 150 | 102 | 48 | 38 | 127 | 100 | 98 | 2   |        |
| SBT50-D127-200 | 301.8 | 200 | 152 | 48 | 38 | 127 | 100 | 98 | 2   |        |

CNC TOOLS  
数控刀柄